



CHINMORE INDUSTRY CO.,LTD

*Specification*

1. Product Type: Indoor Roof/Wall Adhesive Mount  
Antenna for 4G/LTE

2. Chinmore's No: W900 (2-in-1) series

3. Frequency: 690~960/1710~2170/2600~2700MHz

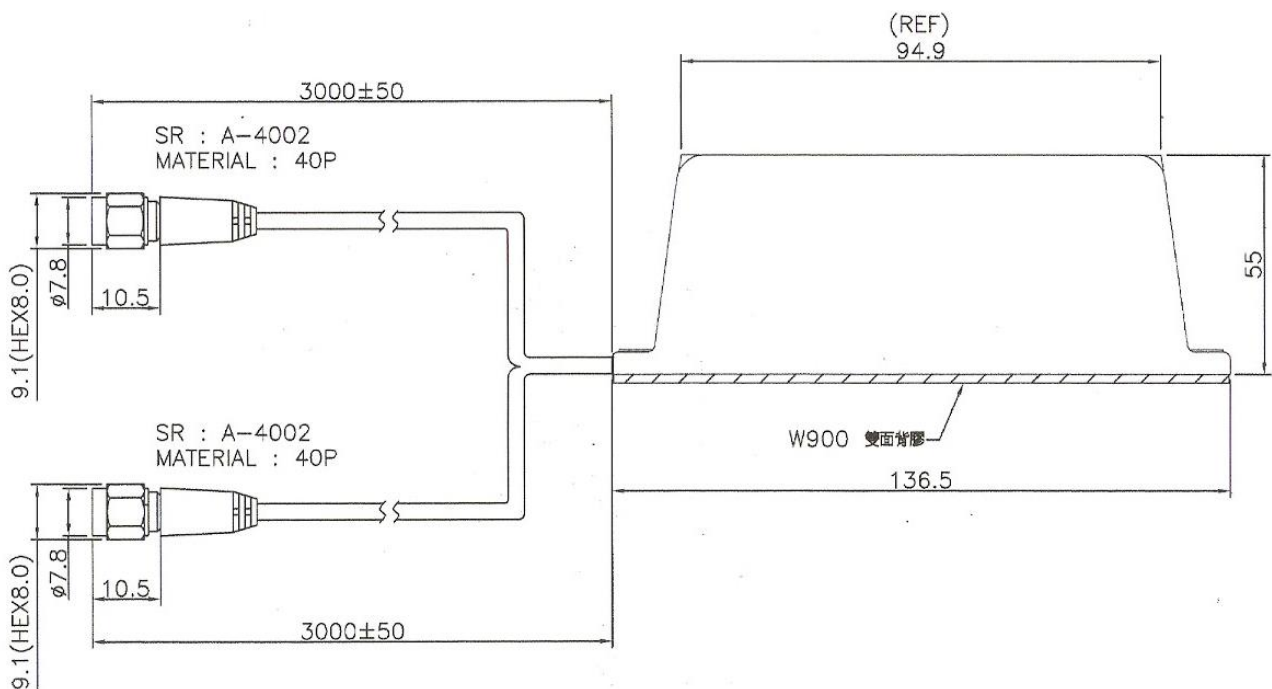
4. VSWR: 3.5:1

5. Cable RG-316 3m & SMA (M) ST connector

6. Gain: 0~3 dBi

*✧RoHS Compliant*

*✧ISO 9001 & ISO 14001*



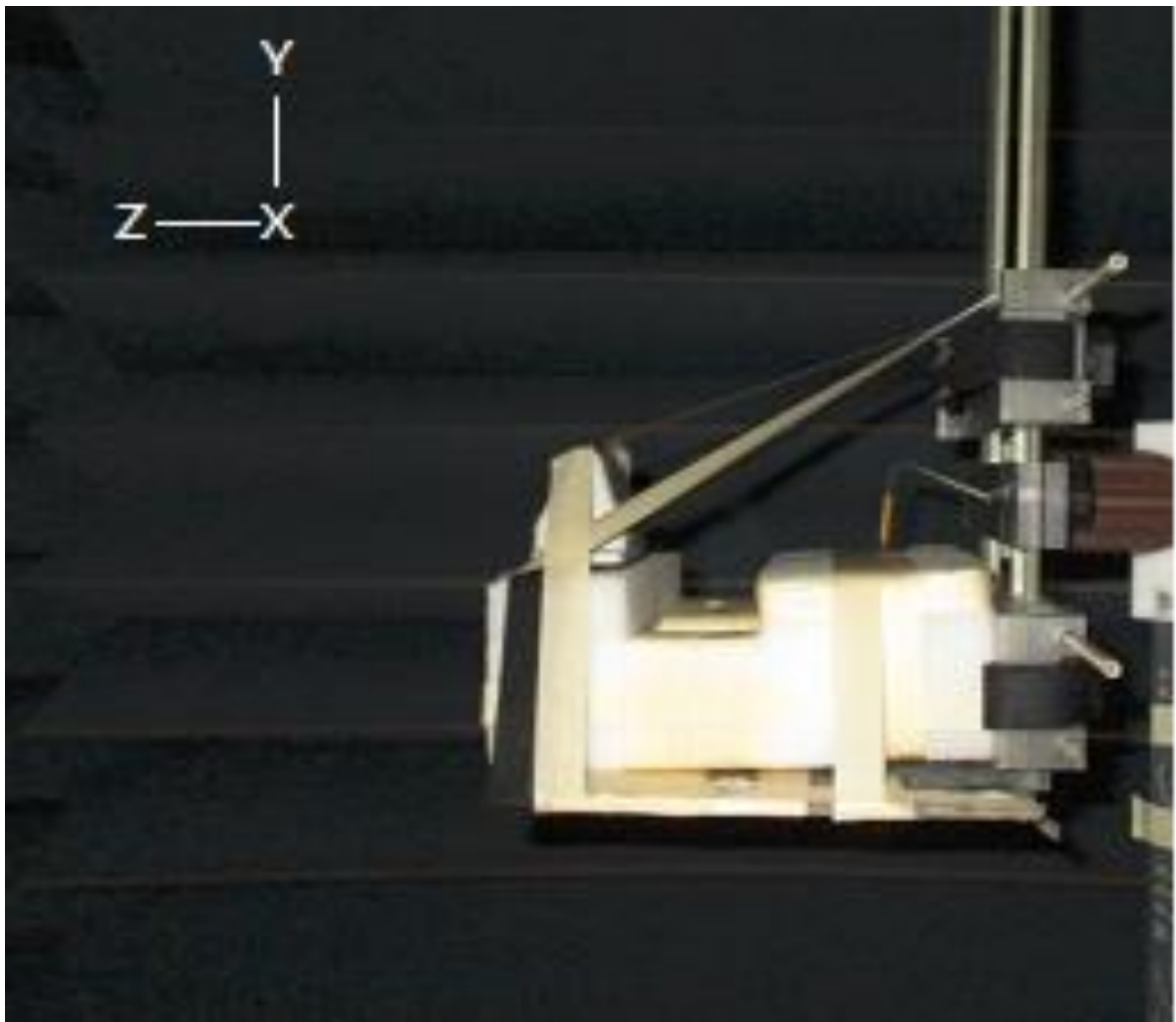
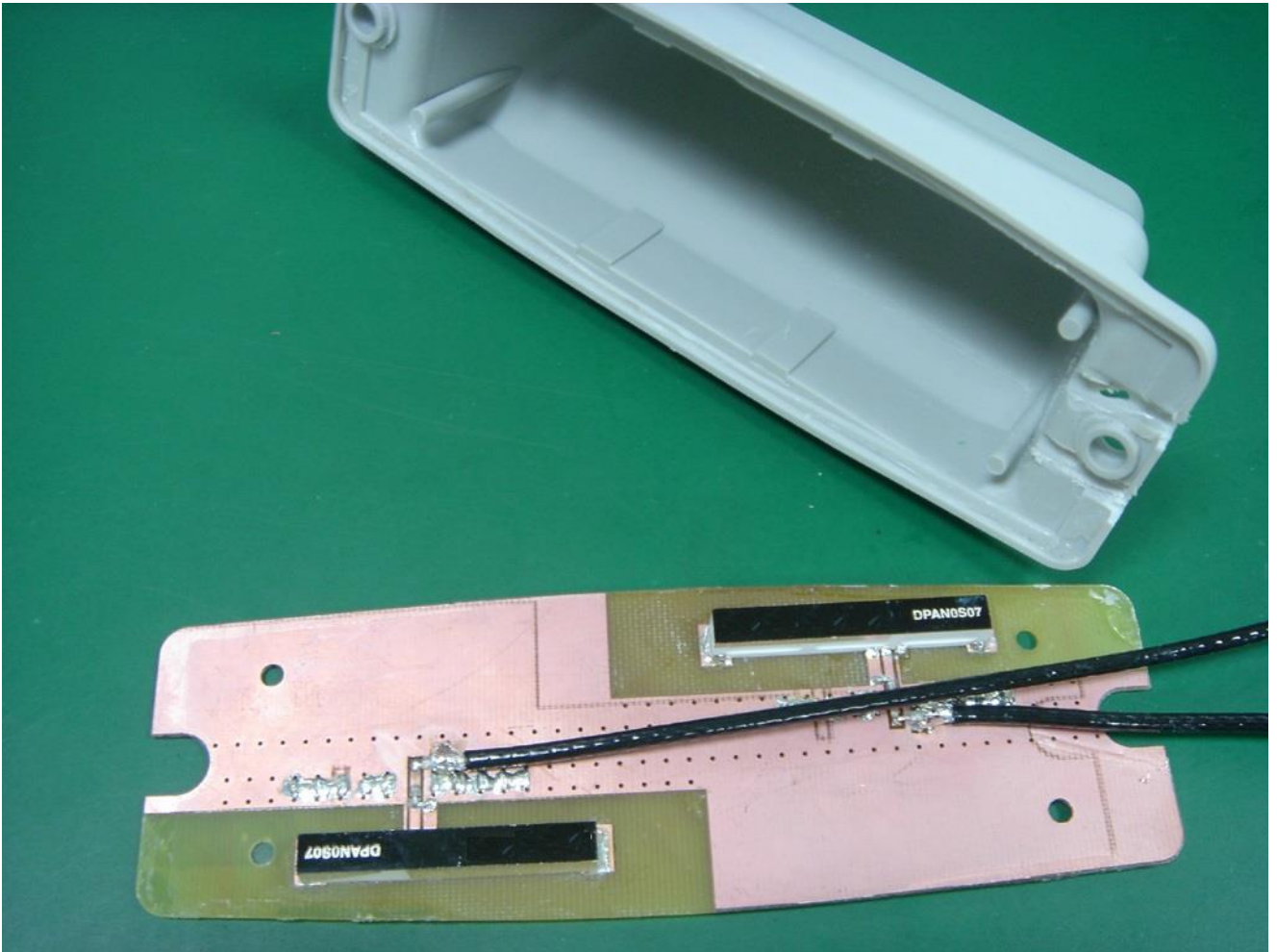
# ELECTRICAL

Frequency (MHz)	Return Loss (dB)Cable 1	VSWR (dB)Cable 1	Return Loss (dB)Cable 2	VSWR (dB)Cable 2	Efficiency (%)	Gain (dB)
690	-5.2	3.3	-5.2	3.4	12.31	-5.94
880	-11.7	1.6	-10.2	1.9	10.70	-6.63
960	-10.7	1.8	-12.2	1.6	42.43	1.15
1710	-9.8	1.9	-8.8	2.1	48.95	2.83
1880	-10.1	1.9	-8.0	2.3	33.77	0.26
2170	-10.4	1.8	-10.8	1.8	48.90	2.87
2600	-12.4	1.6	-13.6	1.5	54.45	3.05
2700	-12.9	1.5	-10.8	1.8	52.62	3.81

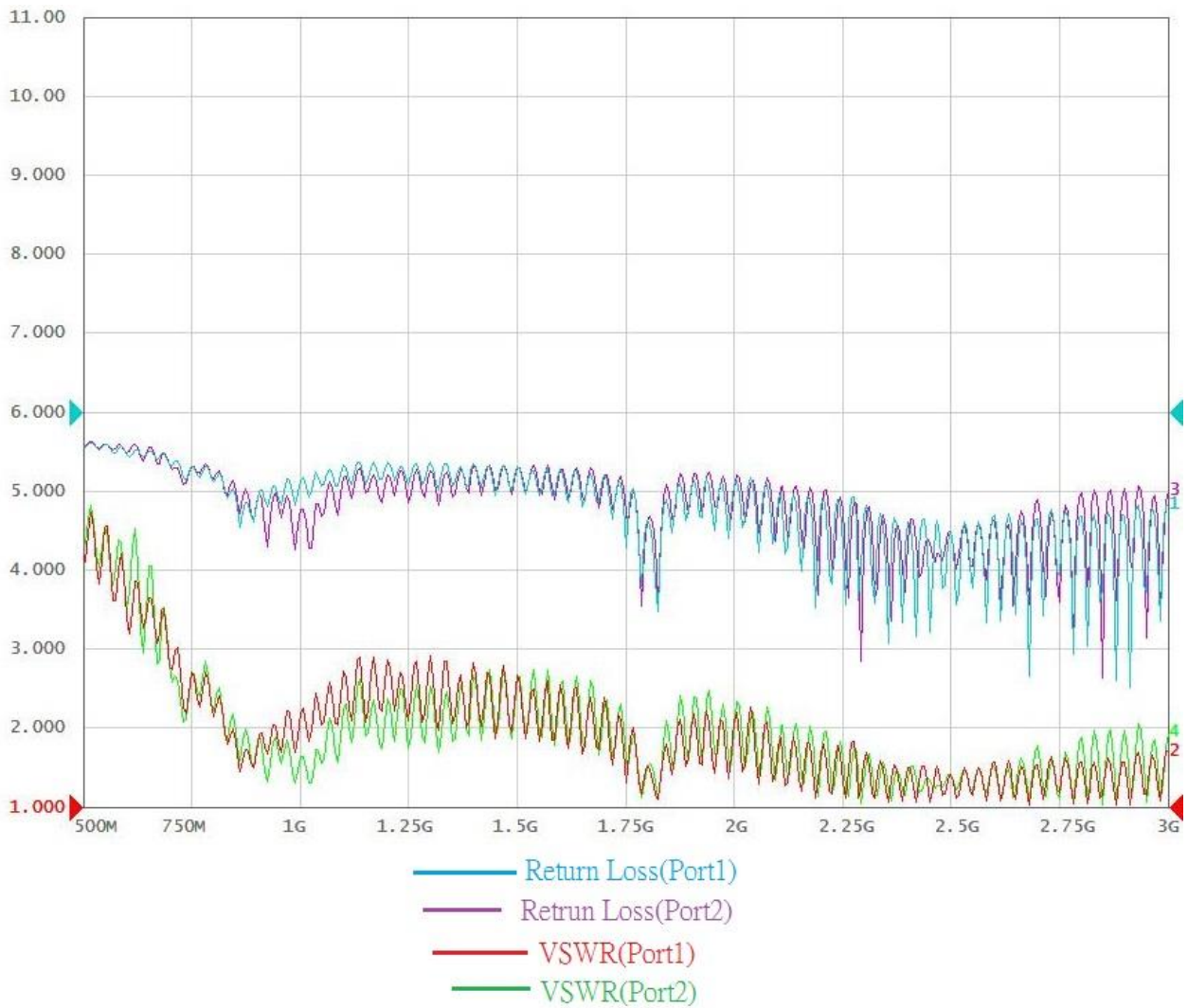
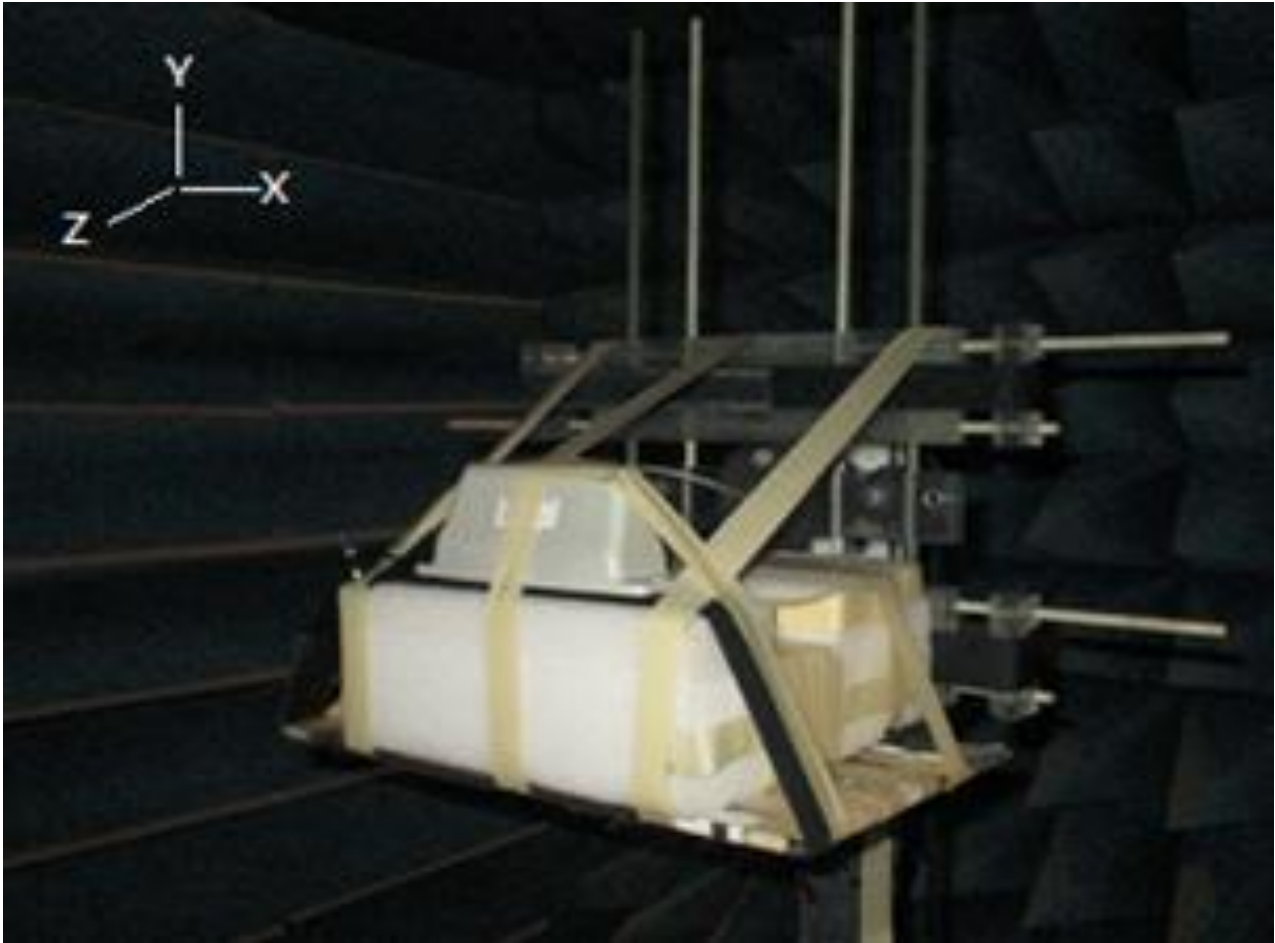
## Measurement Method

### 1. TEST LTE Photo

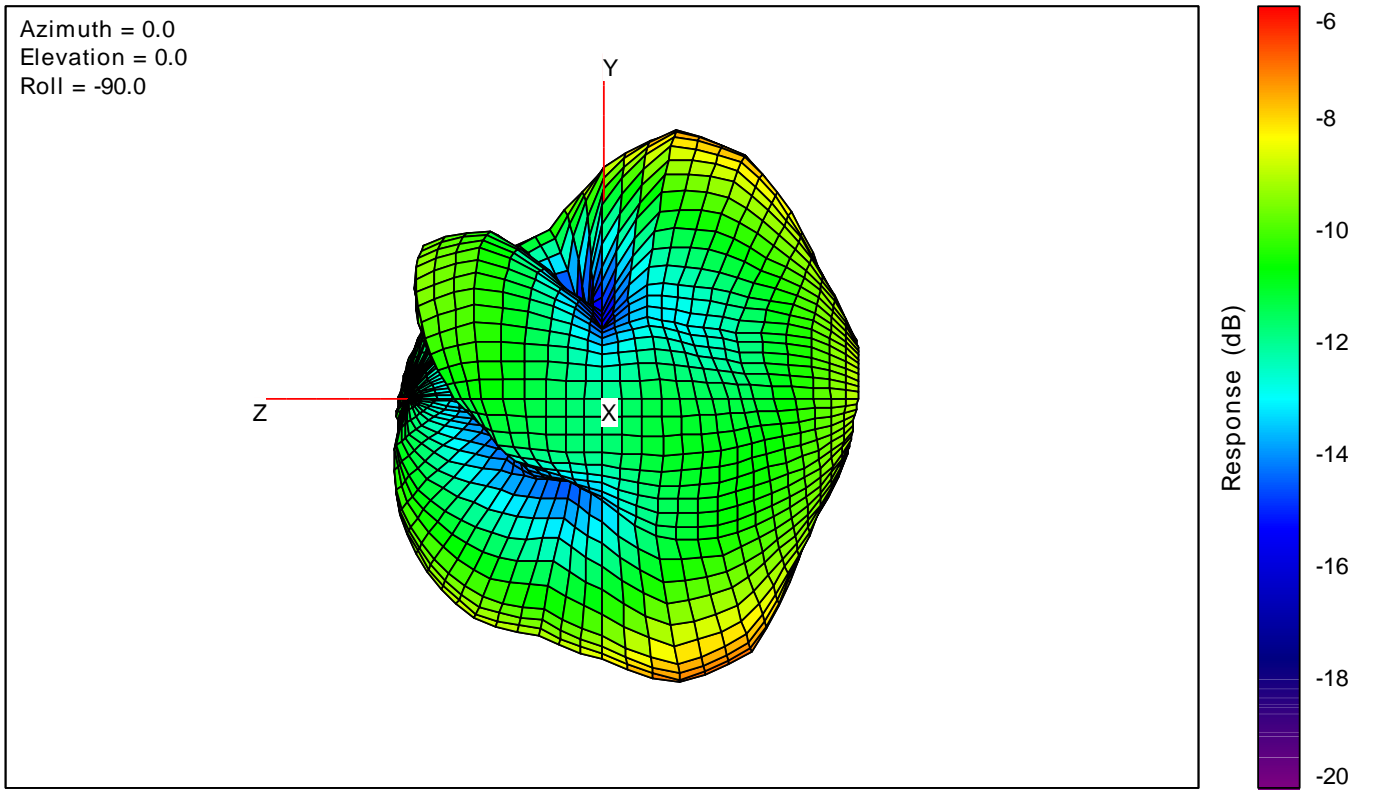




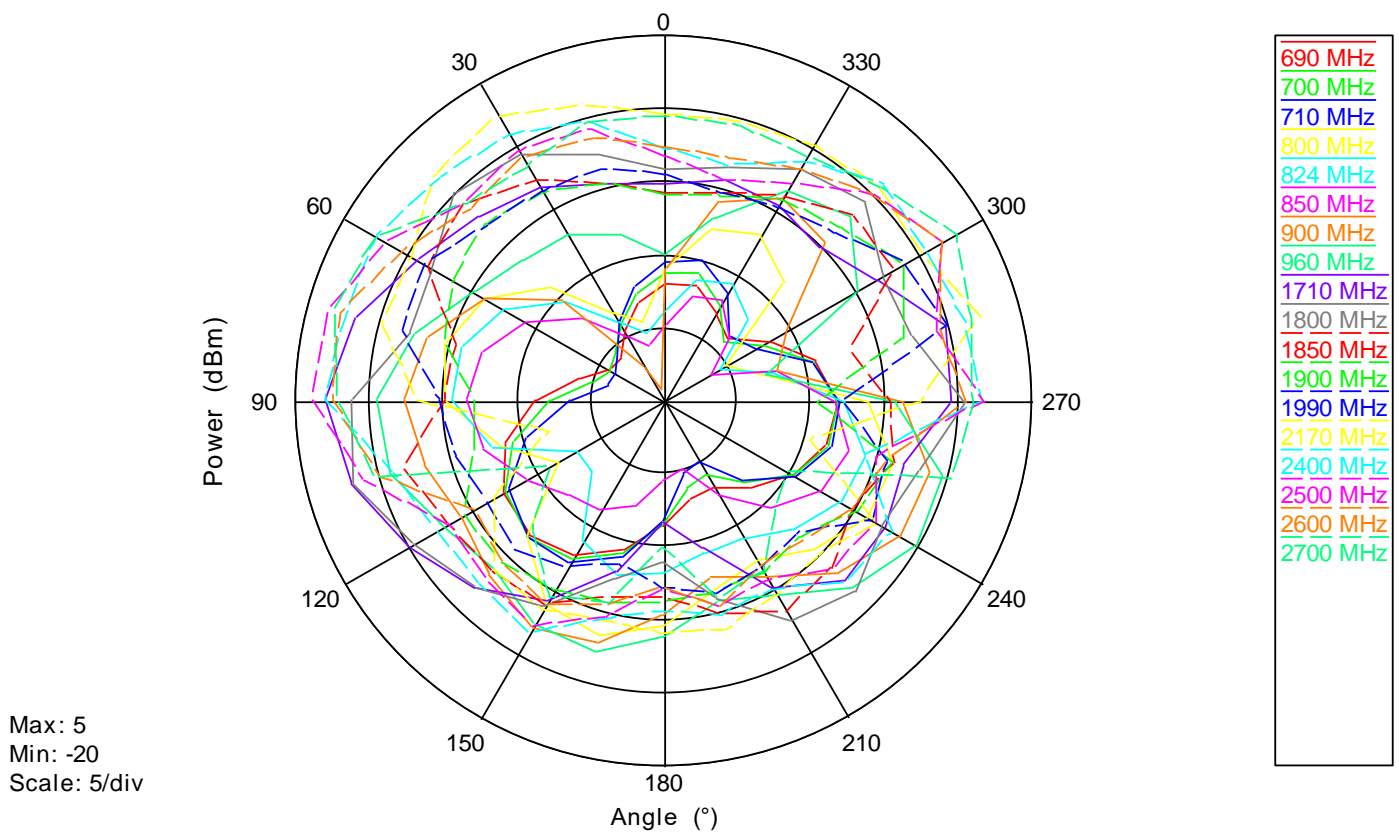


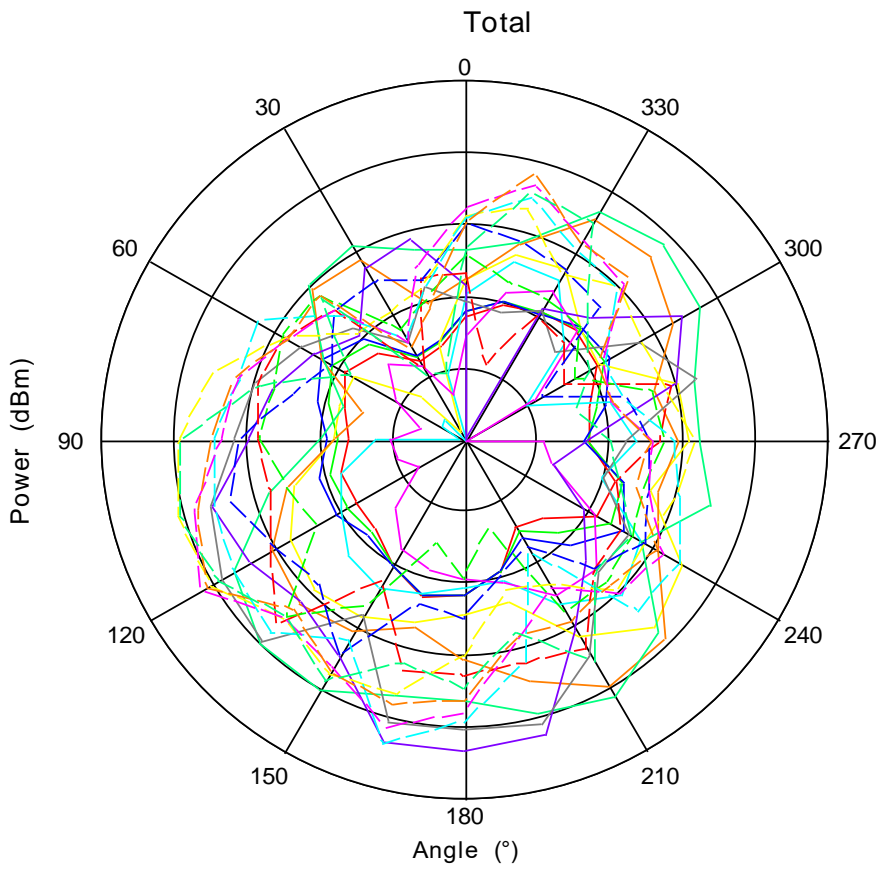


Total

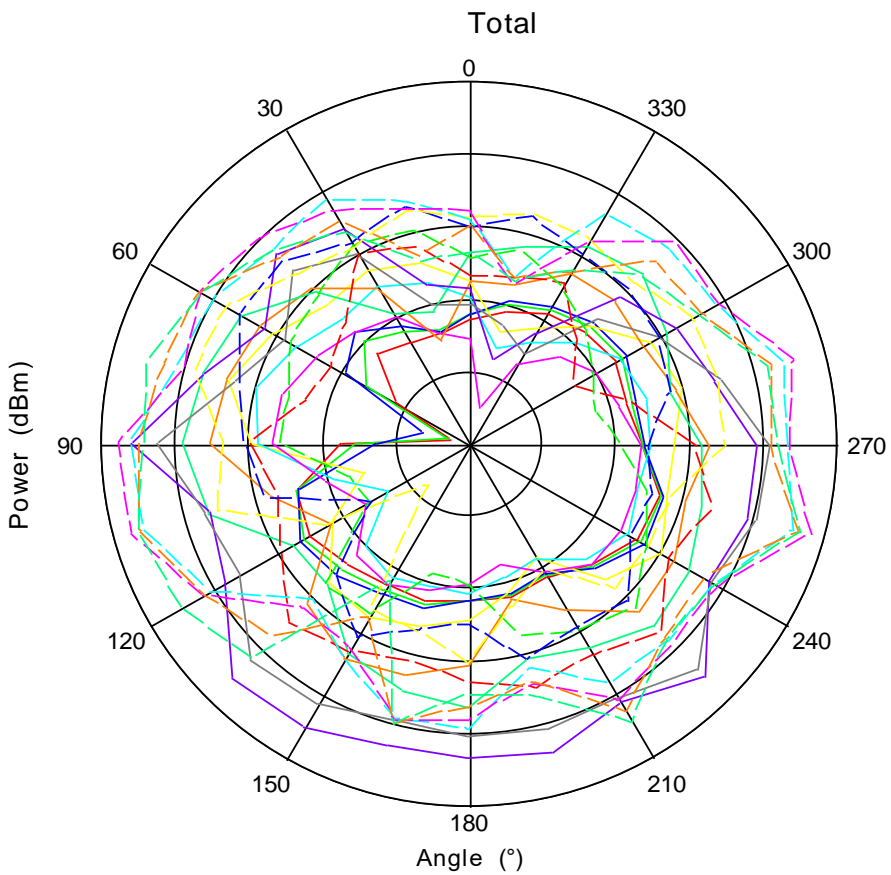


Total





- 690 MHz
- 700 MHz
- 710 MHz
- 800 MHz
- 824 MHz
- 850 MHz
- 900 MHz
- 960 MHz
- 1710 MHz
- 1800 MHz
- 1850 MHz
- 1900 MHz
- 1990 MHz
- 2170 MHz
- 2400 MHz
- 2500 MHz
- 2600 MHz
- 2700 MHz



- 690 MHz
- 700 MHz
- 710 MHz
- 800 MHz
- 824 MHz
- 850 MHz
- 900 MHz
- 960 MHz
- 1710 MHz
- 1800 MHz
- 1850 MHz
- 1900 MHz
- 1990 MHz
- 2170 MHz
- 2400 MHz
- 2500 MHz
- 2600 MHz
- 2700 MHz