



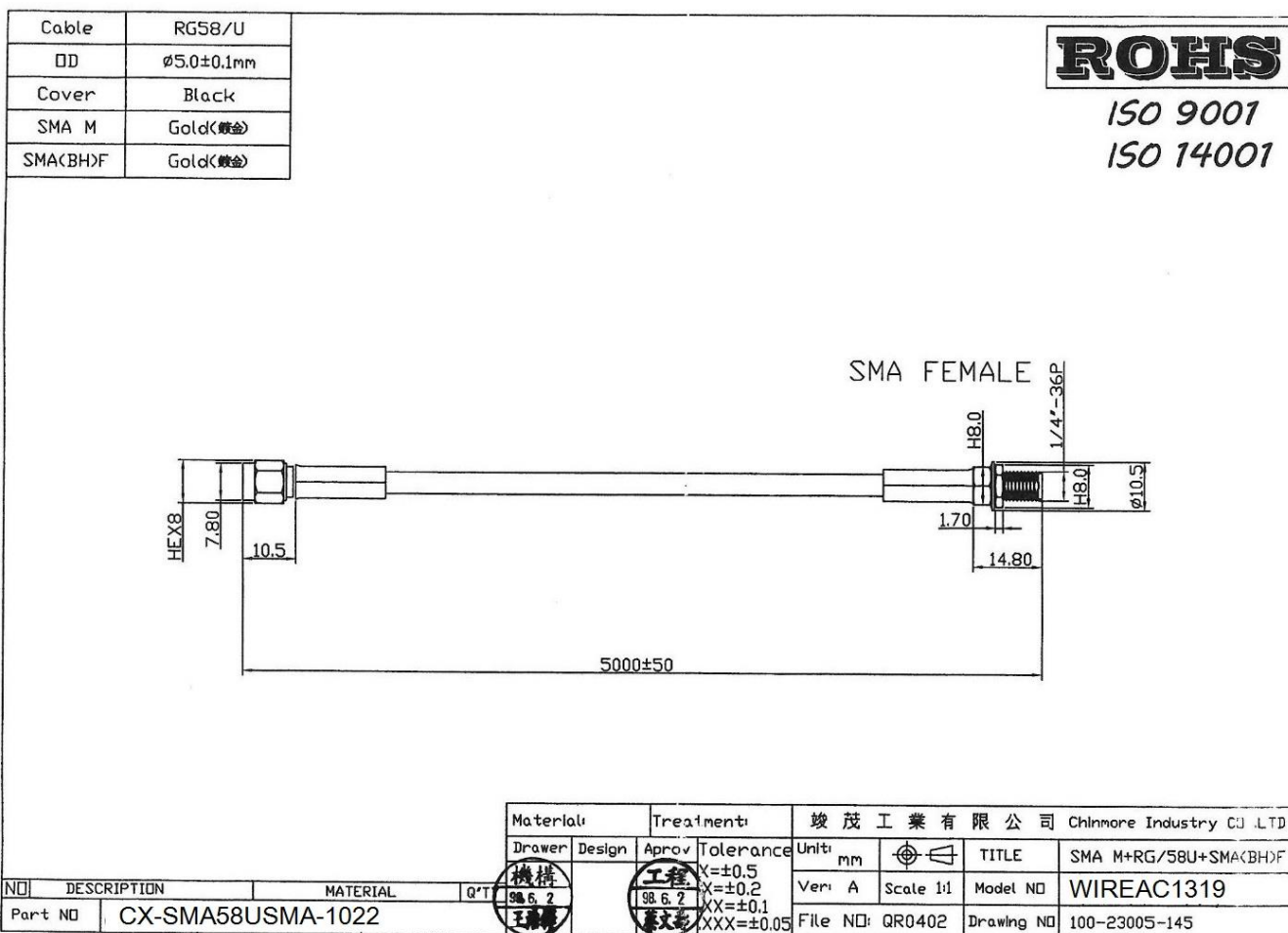
CHINMORE INDUSTRY CO.,LTD

Specification

1. Cable Assembly with RF Connector
2. *Chinmore's* No: CX-SMA58USMA-1022
3. Frequency: 1~3 GHz
4. VSWR: 2.0:1
5. Cable: RG-58 5M
6. Connector: SMA (M) ST & SMA F Bulkhead

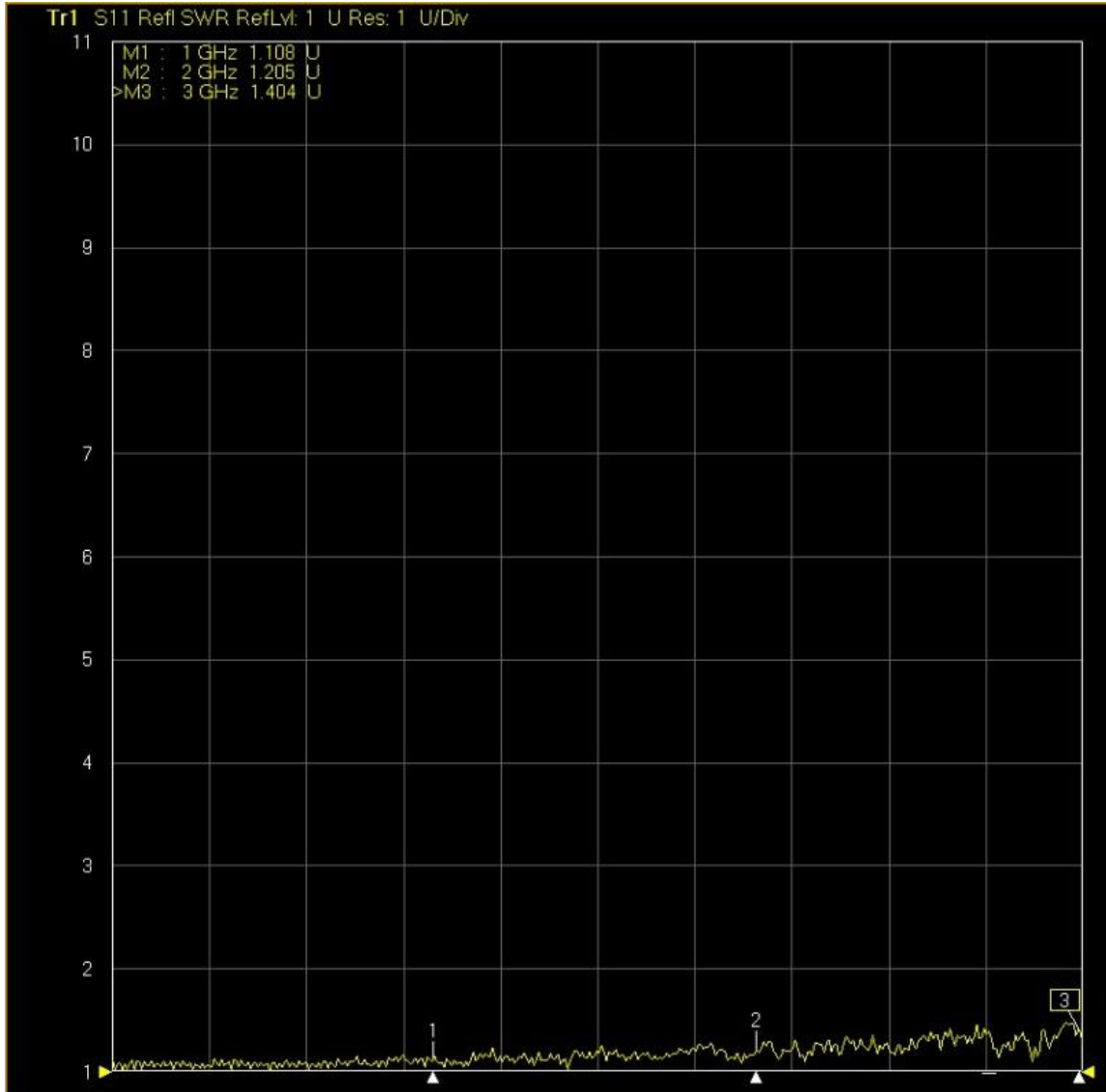
✧RoHS Compliant

✧ISO 9001 & ISO 14001



Frequency (MHz)	VSWR	Insertion Loss (dB)
1000 MHz	1.10	-3.41
2000 MHz	1.20	-5.32
3000 MHz	1.40	-7.26

Test Report



▶ **IT2** S21 Trans LogM RefLvl: 0 dB Res: 10 dB/Div

