



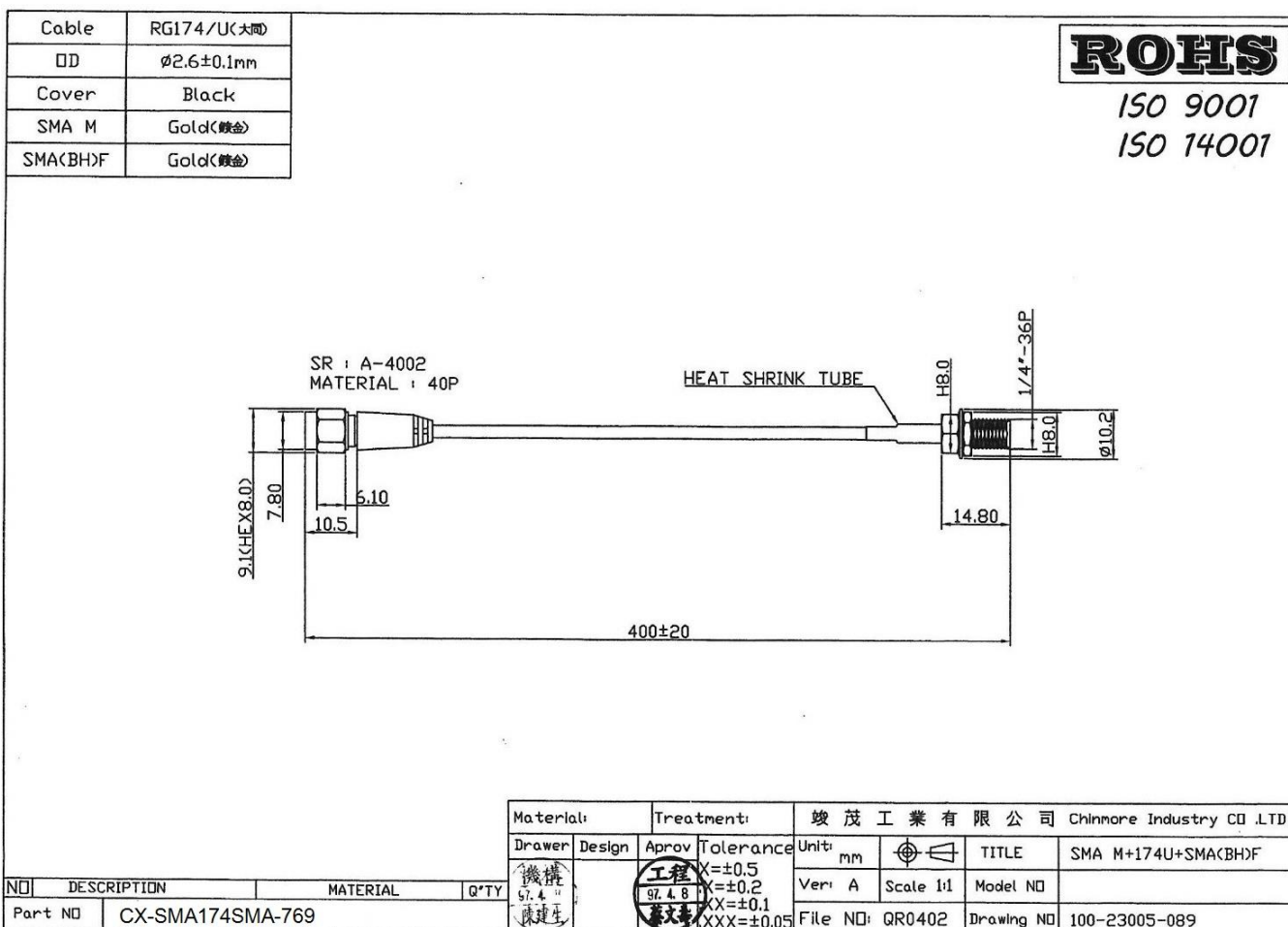
CHINMORE INDUSTRY CO.,LTD

Specification

1. Cable Assembly with RF Connector
2. *Chinmore's* No: CX-SMA174SMA-769
3. Frequency: 1~3 GHz
4. VSWR: 2.0:1
5. Cable: RG-174 400mm
6. Connector: SMA M & SMA F Bulkhead

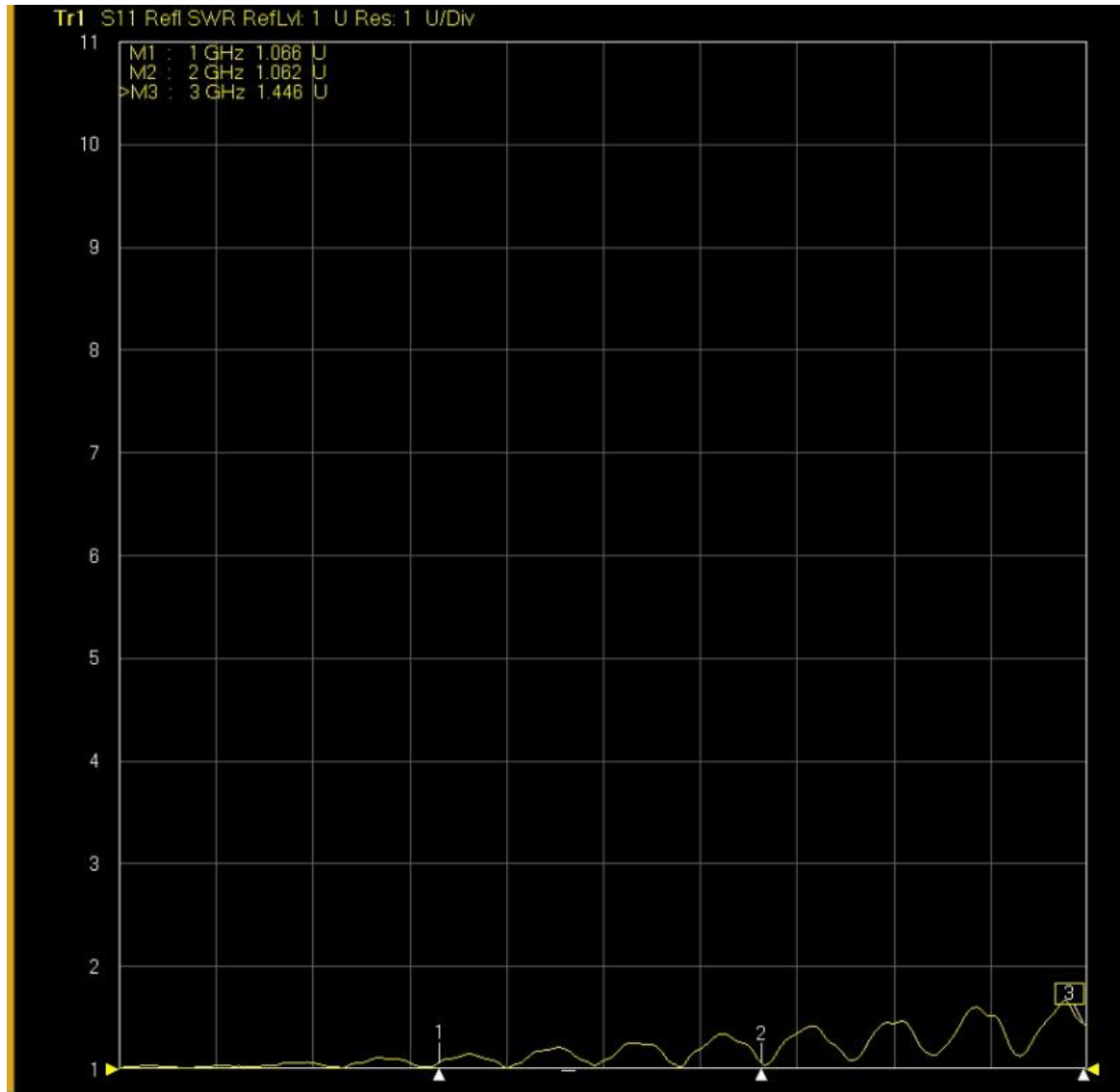
✧RoHS Compliant

✧ISO 9001 & ISO 14001



Frequency (MHz)	VSWR	Insertion Loss (dB)
900 MHz	1.06	-0.51
1800 MHz	1.06	-0.78
2100 MHz	1.44	-1.32

Test Report



▶ **IT2** S21 Trans LooM RefLvl: 0 dB Res: 10 dB/Div

