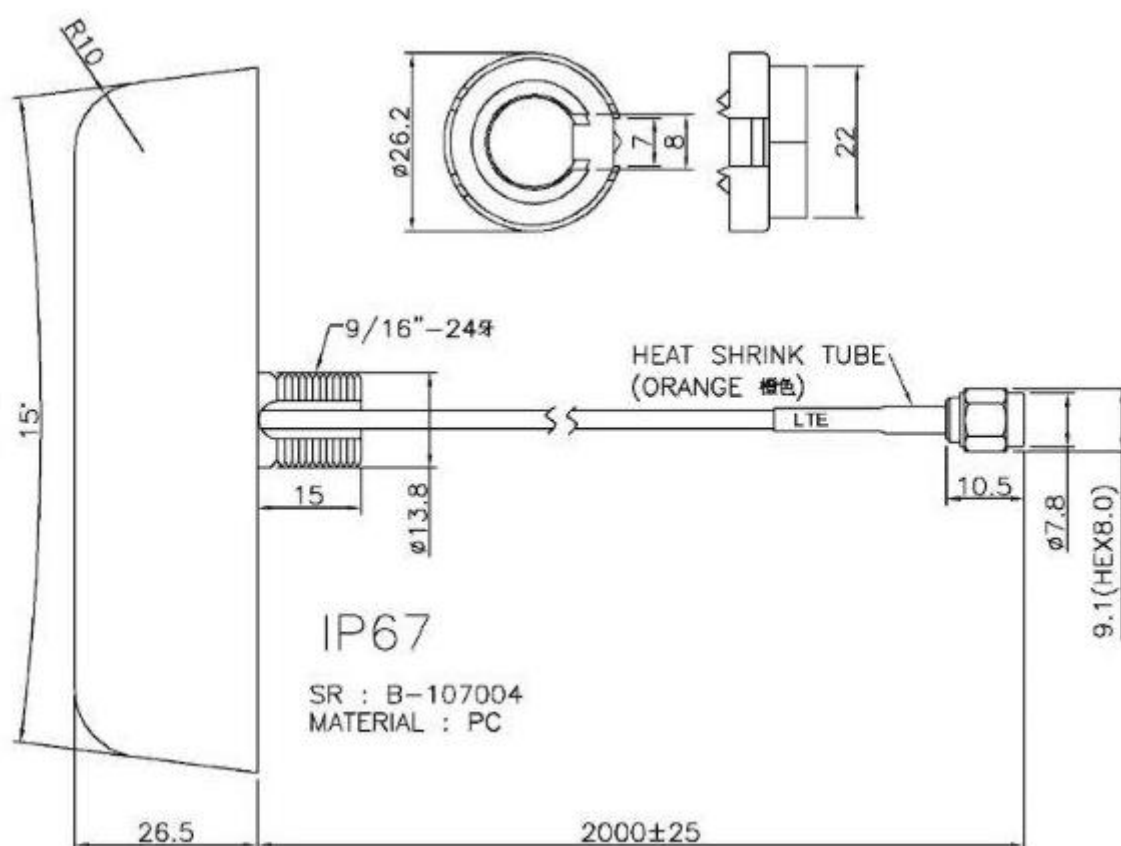




CHINMORE INDUSTRY CO.,LTD

Specification

- 1. Product Type: LTE+ANTENNA
 - 2. *Chinmore* No: R47+174U+SMA M
 - 3. Frequency: 700~2690 MHZ
 - 4. VSWR: 3.0:1
 - 5. Cable: RG174U
 - 6. Connector: SMA M
- ※RoHS Compliant

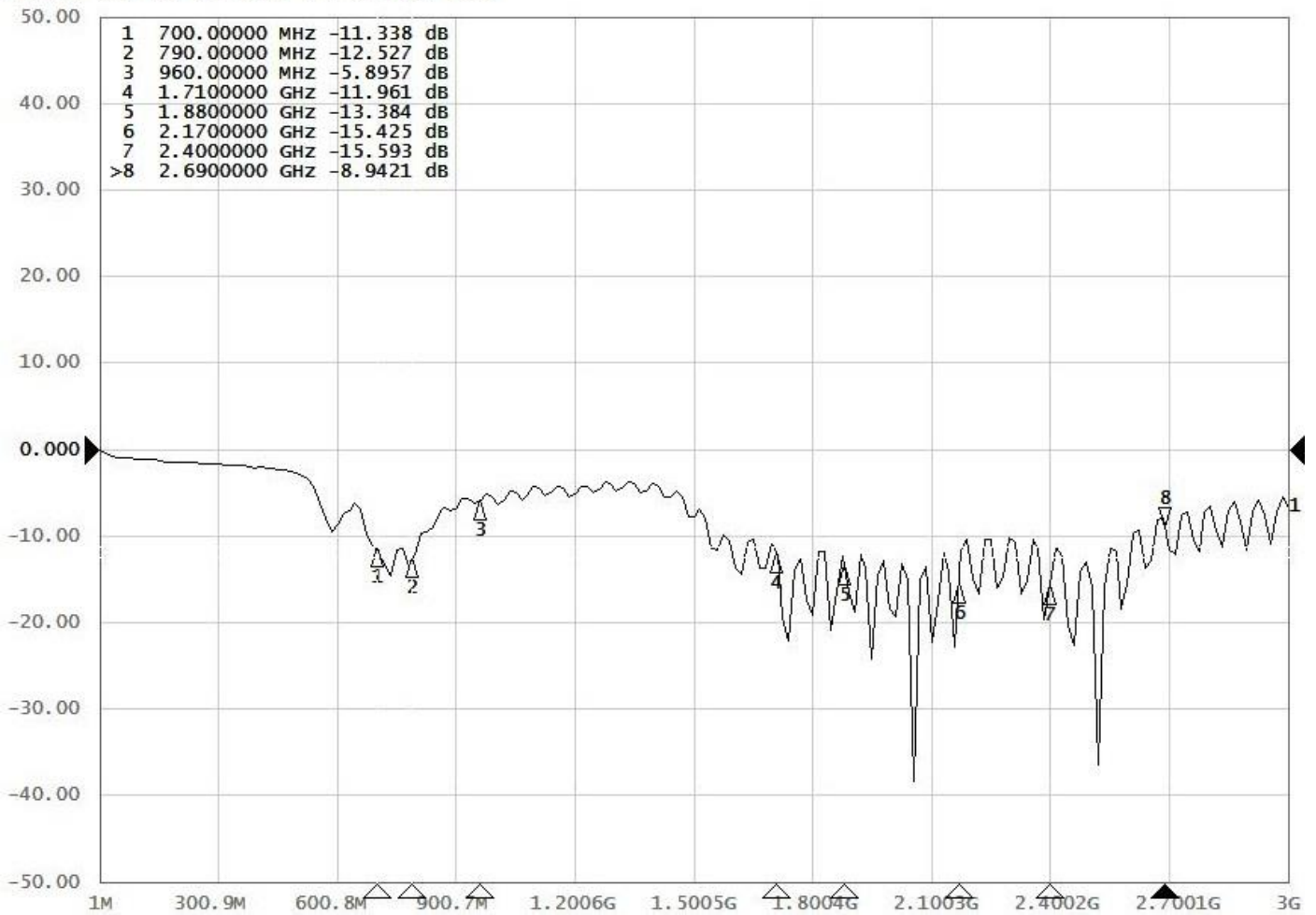


ELECTRICAL

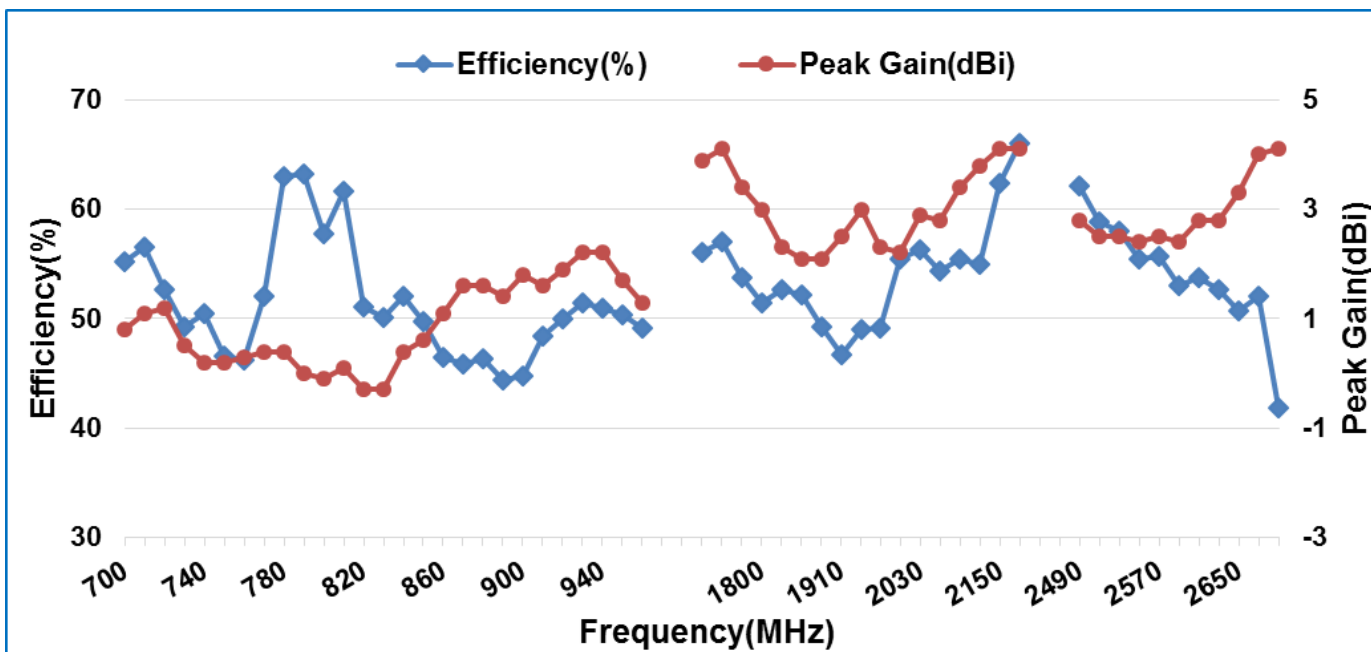
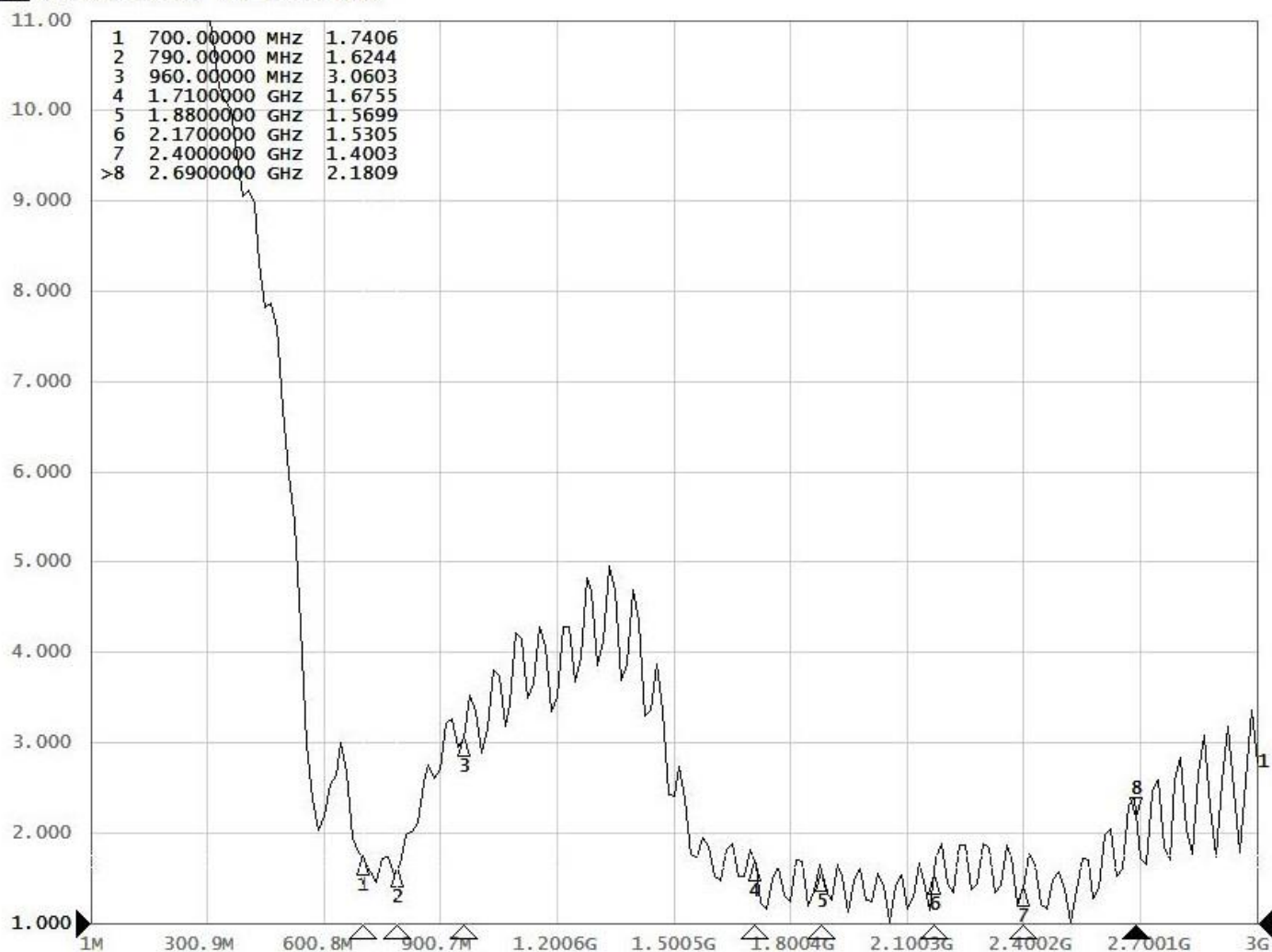
Frequency (MHz)	Return Loss (dB)	VSWR	Efficiency (%)	Peak Gain (dBi)
700	-11.33	1.74	55.2	0.8
790	-12.52	1.62	63.2	0.0
960	-5.89	3.06	49.1	1.3
1710	-11.96	1.67	56.1	3.9
1880	-13.38	1.56	49.2	2.1
2170	-15.42	1.53	66.0	4.1
2400	-15.59	1.40	62.1	2.8
2690	-8.94	2.18	41.8	4.1

1. TEST Report

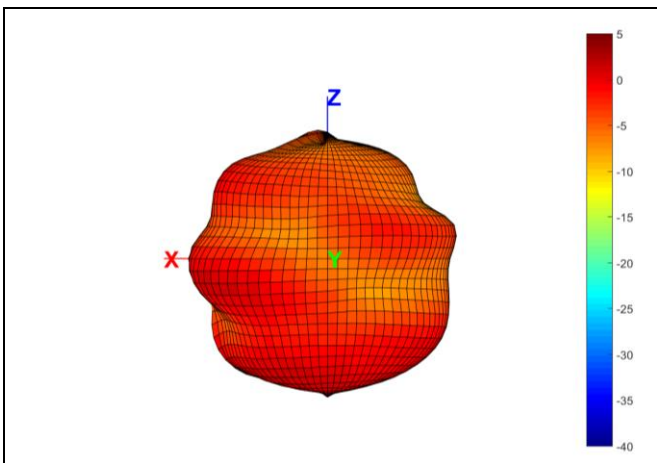
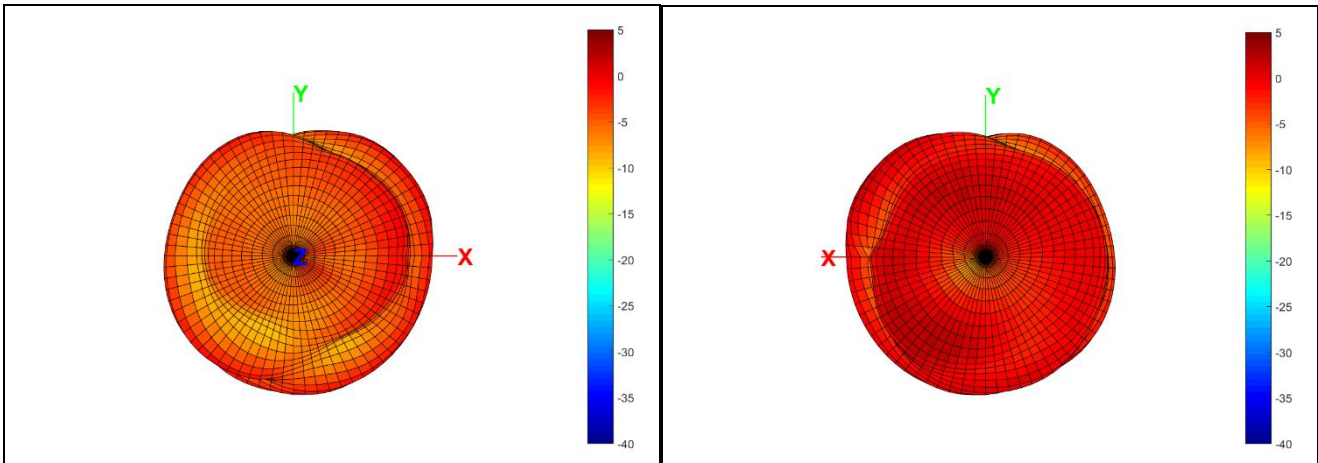
Tr1 S11 Log Mag 10.00dB/ Ref 0.000dB [RO]



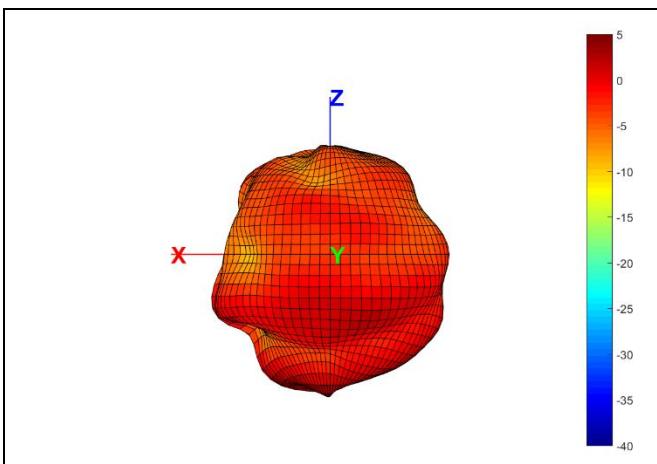
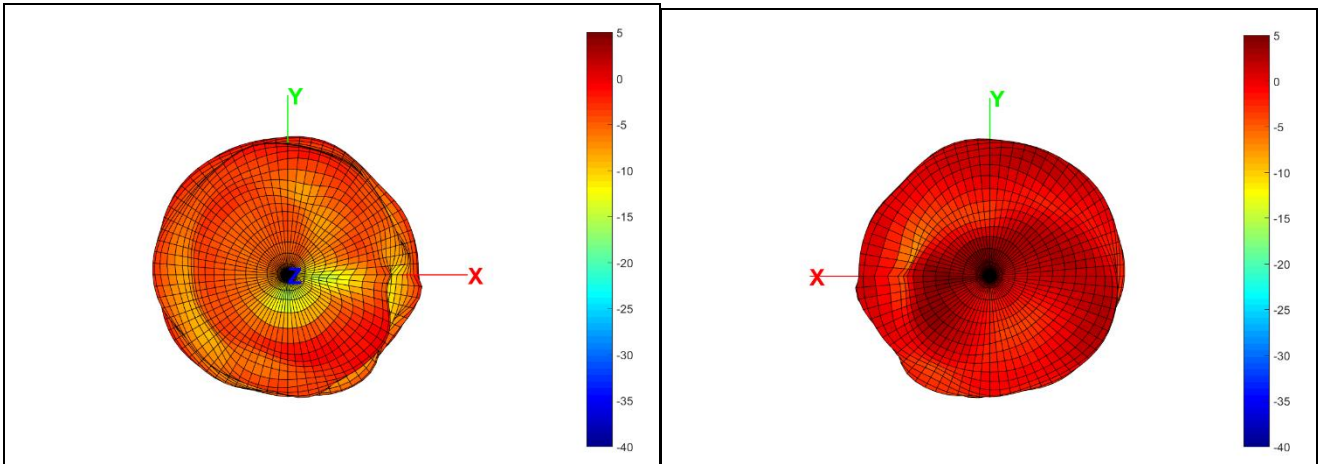
Top S11 SWR 1.000/ Ref 1.000 [RO]



3D Gain Pattern (Radiation Pattern @ 930 MHz) (unit: dBi)



3D Gain Pattern (Radiation Pattern @ 1940MHz) (unit: dBi)



3D Gain Pattern (Radiation Pattern @ 2590MHz) (unit: dBi)

