



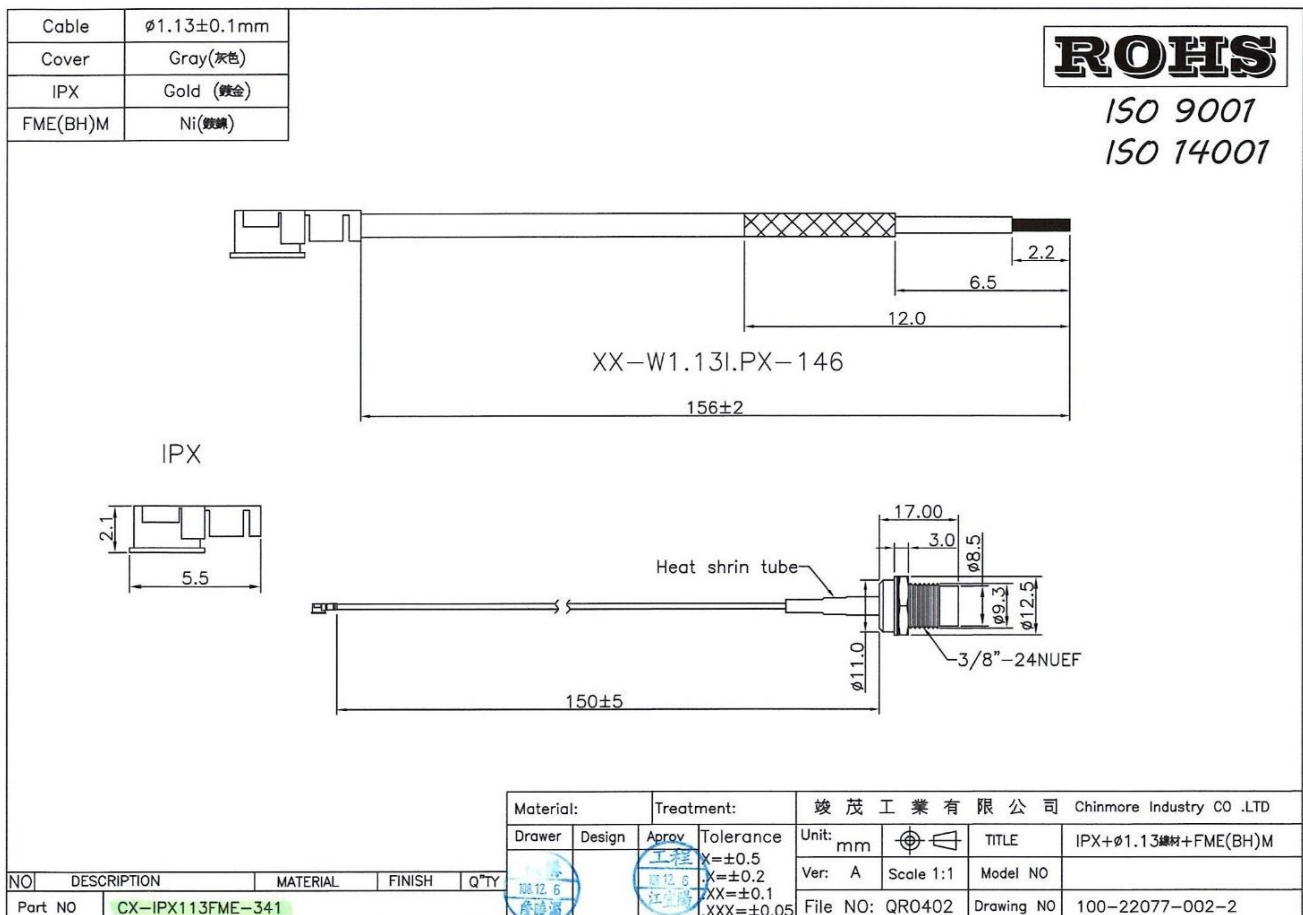
CHINMORE INDUSTRY CO.,LTD

Specification

1. Mini Coaxial Cable Assembly with RF Connector
2. *Chinmore's* No: CX-IPX113FME-341
3. Frequency: 600MHZ~3GHz
4. VSWR: 2.0:1
5. Cable: $\varnothing 1.13$ 150mm
6. Connector: I.PX & FME M Bulkhead

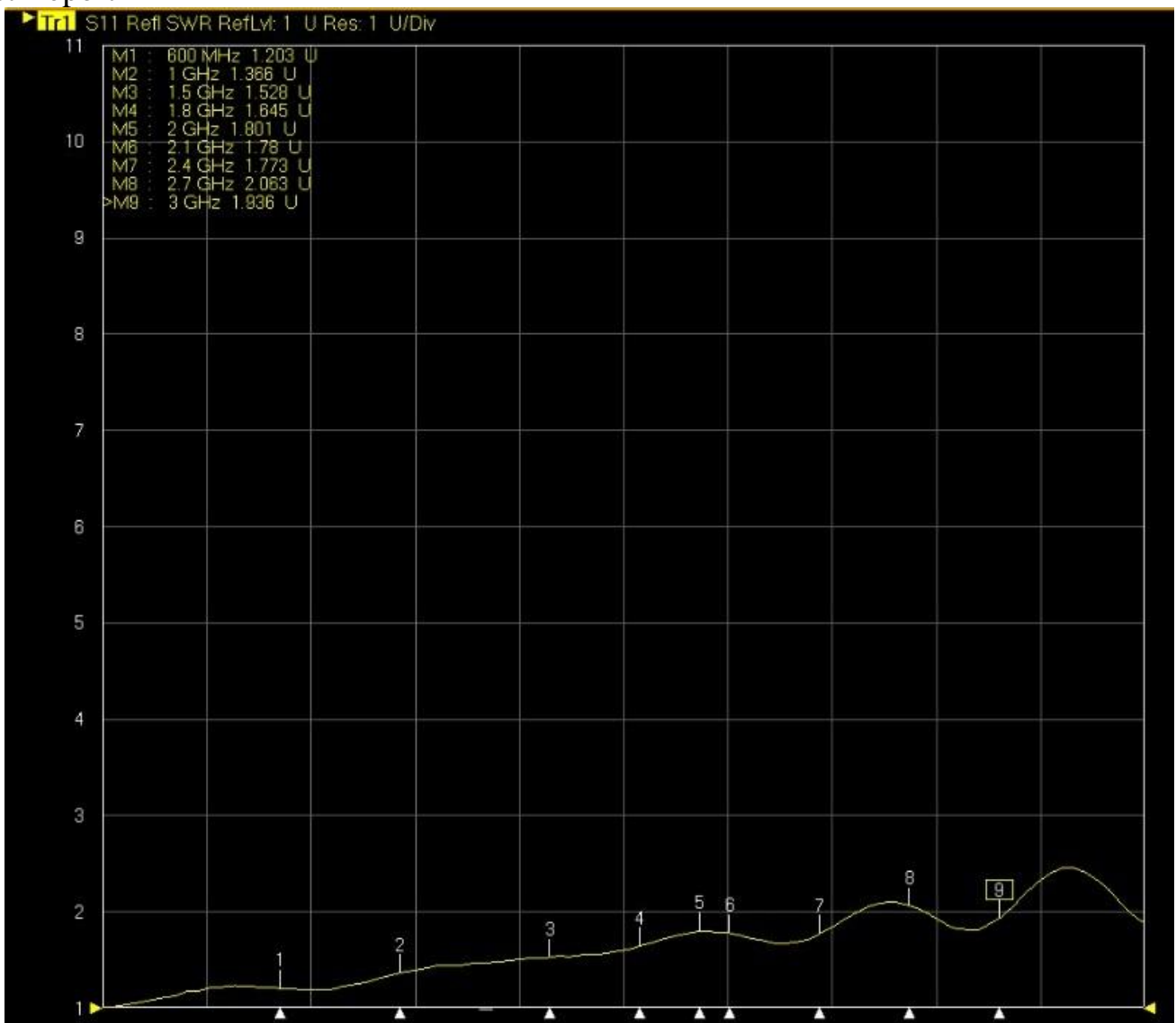
✧RoHS Compliant

✧ISO 9001 & ISO 14001



Frequency (MHz)	VSWR	Insertion Loss (dB)
600	1.20	-0.66
1000	1.36	-0.92
1500	1.52	-1.21
1800	1.64	-1.47
2000	1.80	-1.60
2100	1.78	-1.57
2400	1.77	-1.84
2700	2.06	-2.15
3000	1.93	-2.32

Test Report



Tr2 S12 Trans LooM RefLvl: 0 dB Res: 10 dB/Div

