



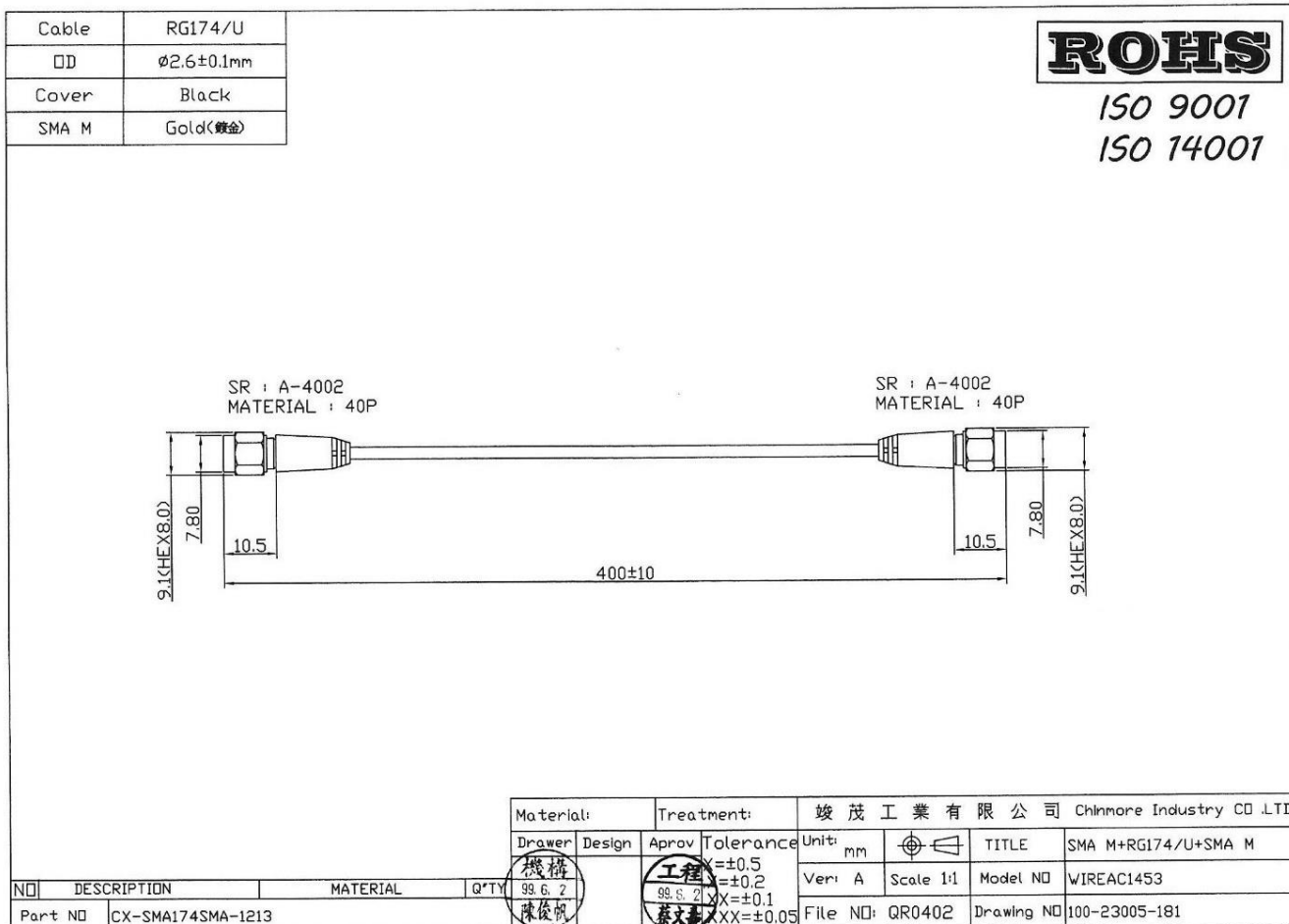
CHINMORE INDUSTRY CO.,LTD

Specification

1. Cable Assembly with RF Connector
2. *Chinmore's* No: CX-SMA174SMA-1213
3. Frequency: 600MHZ~3GHz
4. VSWR: 2.0:1
5. Cable: RG174 400mm
6. Connector: SMA (M) ST & SMA (M) ST

✧RoHS Compliant

✧ISO 9001 & ISO 14001



Frequency (MHz)	VSWR	Insertion Loss (dB)
600	1.08	-0.09
900	1.03	-0.08
1575	1.16	-0.09
1800	1.23	-0.14
2000	1.41	-0.18
2100	1.19	-0.14
2400	1.55	-0.23
2700	1.65	-0.39
3000	1.59	-0.34

TEST Report

