



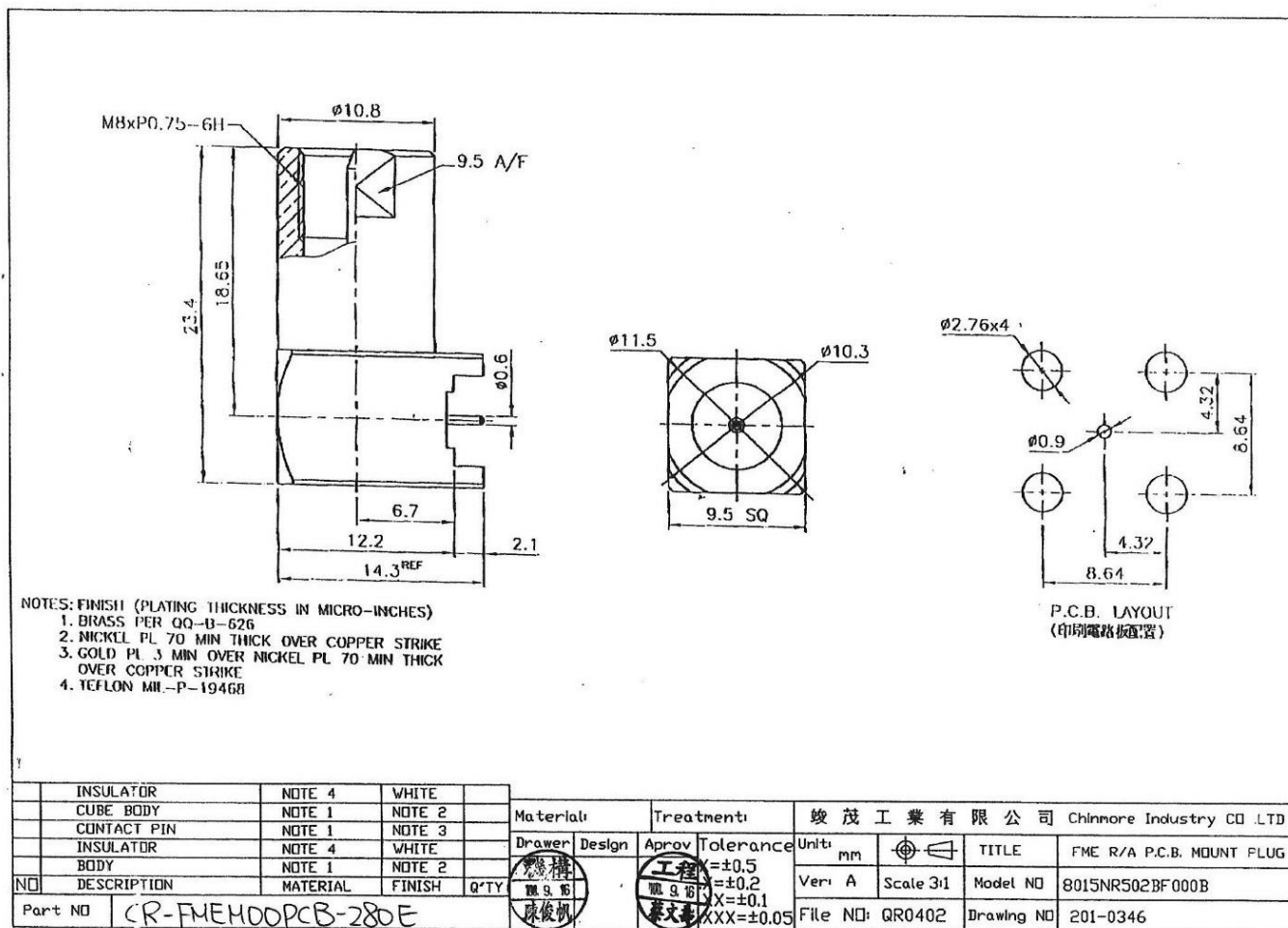
# CHINMORE INDUSTRY CO.,LTD

## Specification

1. Product Type: FME Series Connector
2. Chinmore's No: CR-FMEM00PCB-280E
3. MT.Type: PCB, MOUNT

※RoHS Compliant

※ISO 9001 & ISO 14001



## Specifications

Impedance		50 ohm
Frequency Range		0 - 3 GHz
Working Voltage		500 VRMS max.
Dielectric Withstanding Voltage		1000 VRMS min.
VSWR	Straight	1.3 max
	Right Angle	1.5 max
Contact Resistance	Center Contact	10 Milliohms Max.
	Outer Contact	5 Milliohms Max.
Insulator Resistance		5000 Megohms min.
<b>Parts Name</b>	<b>Material</b>	<b>Finish</b>
Body, Metal Parts	Brass per QQ-B-626	Nickel 70 micro-inches
Center Contacts	Male: Brass per QQ-B-626	Gold 3 micro-inches
	Female: Phosphor Bronze per QQ-B-750	Gold 3 micro-inches
Insulators	Teflon, Delrin	None
Crimp Ferrules	Annealed Brass	Nickel 70 micro-inches
Clamp Gaskets	Silicone rubber	None