



# CHINMORE INDUSTRY CO.,LTD

## Specification

1. Product Type: Mag Mount Antenna

GSM Antenna

2. *Chinmore's* No: C02+MT07+RG-174+SMA M

3. Frequency: 900~1800 MHz

4. VSWR: 2.0:1

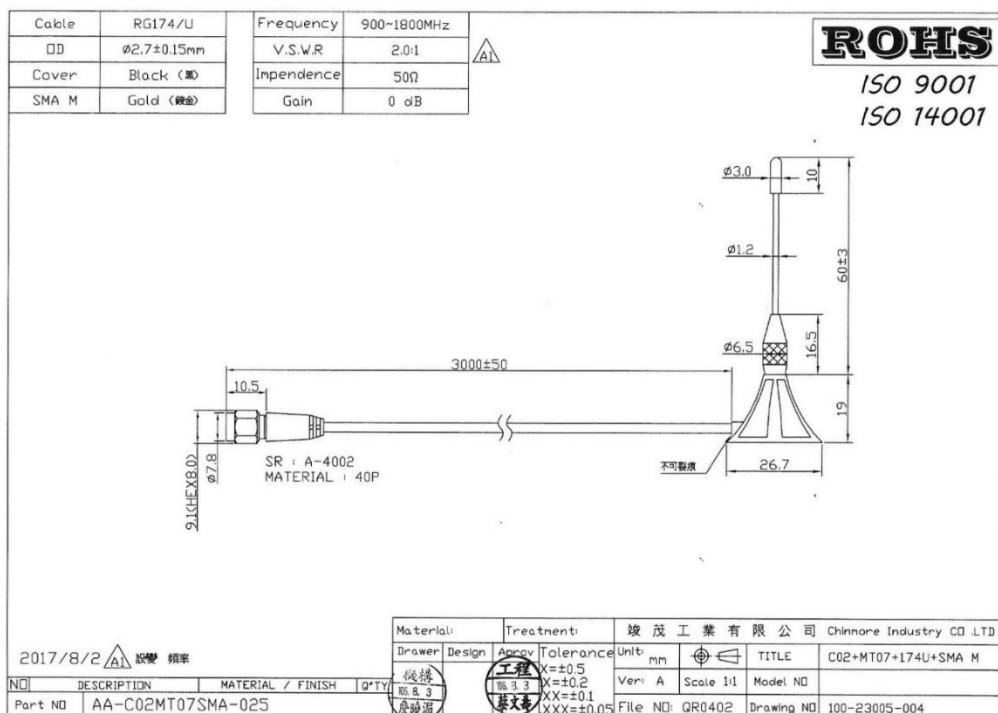
5. Gain: 0 dBi

4. Cable: RG-174

5. Connector: SMA (M) ST

※RoHS Compliant

※ISO 9001 & ISO 14001

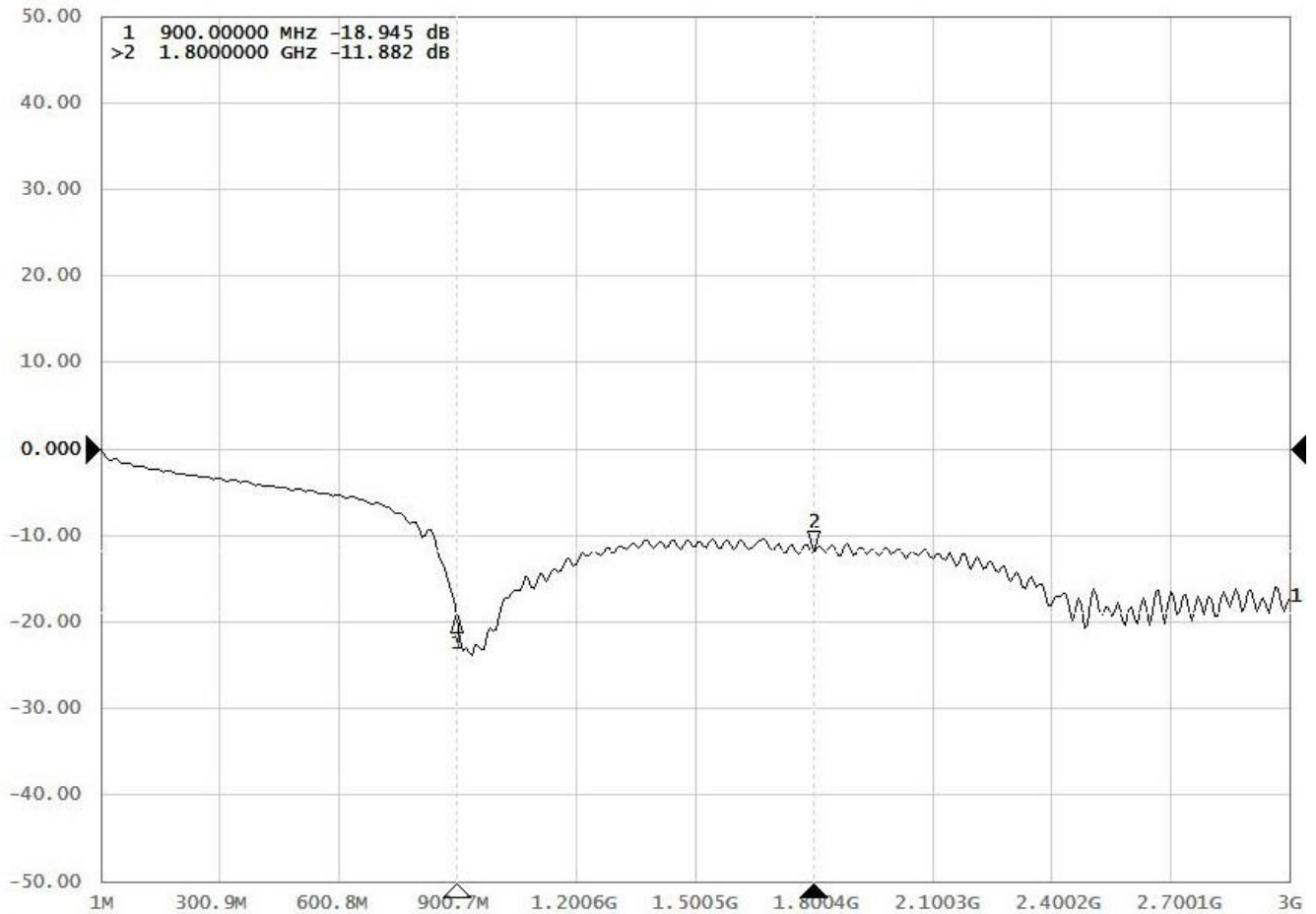


# ELECTRICAL

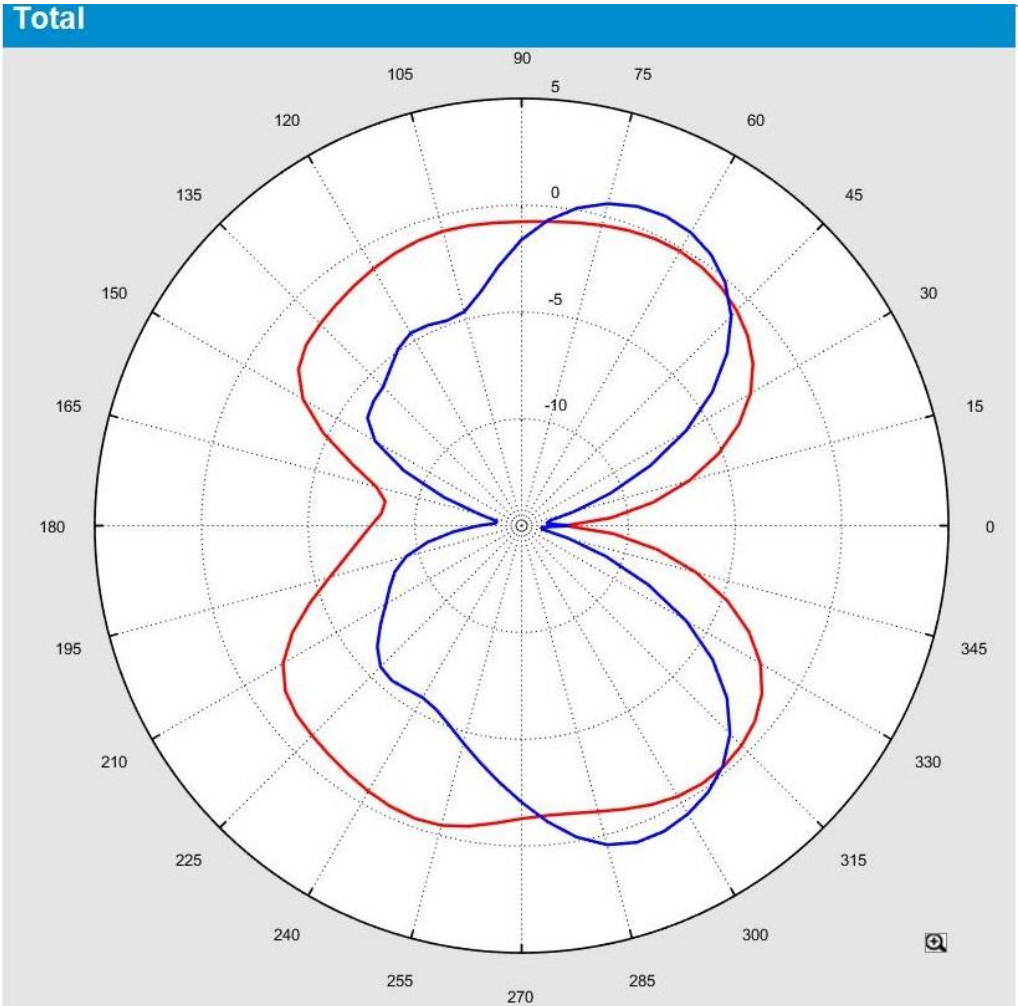
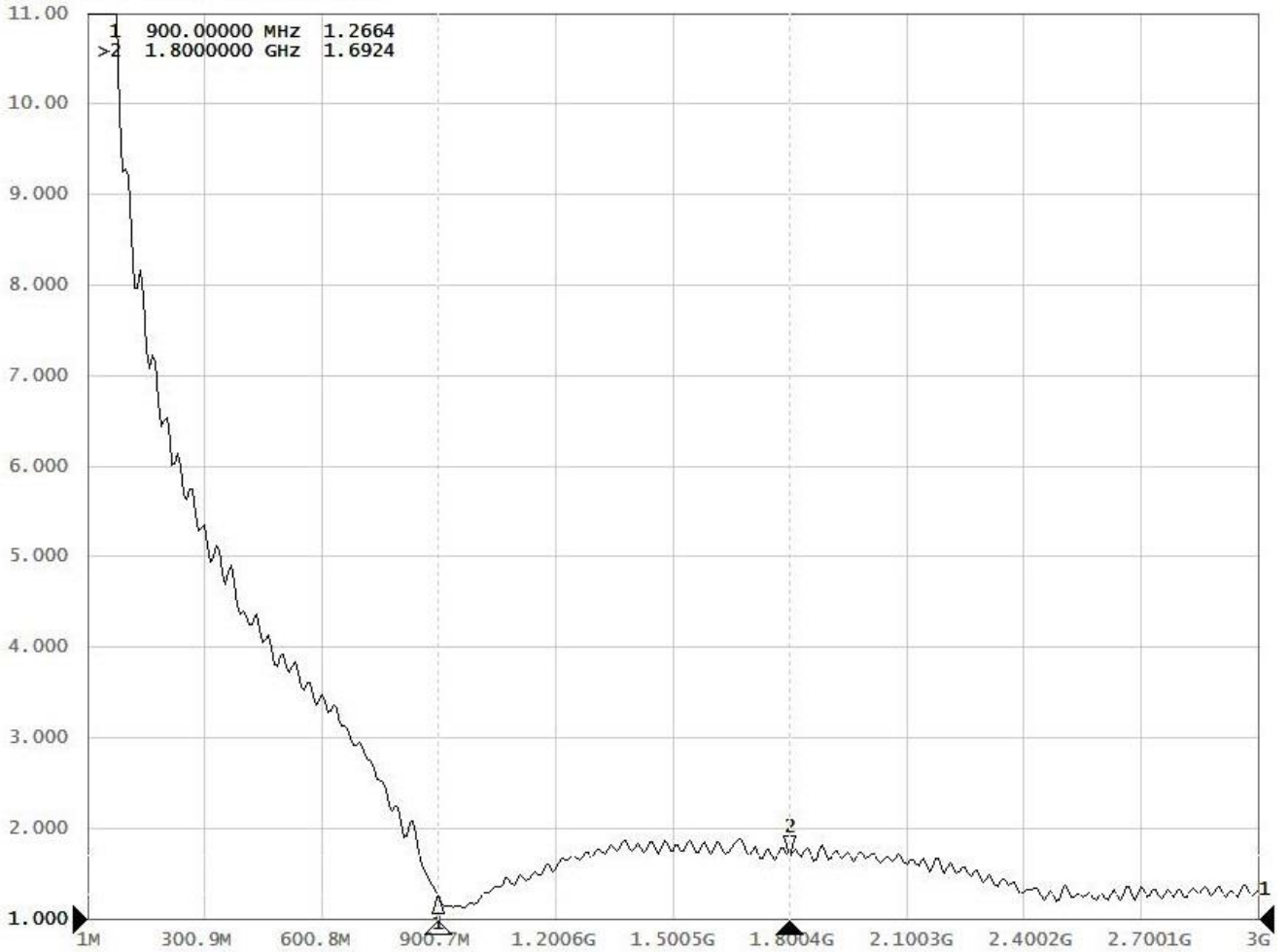
| Frequency (MHz) | Return Loss (dB) | VSWR | Efficiency (%) | Gain (dBi) |
|-----------------|------------------|------|----------------|------------|
| 900             | -18.94           | 1.26 | 74.99          | 0.45       |
| 1800            | -11.88           | 1.69 | 47.86          | 1.05       |

## Test Data

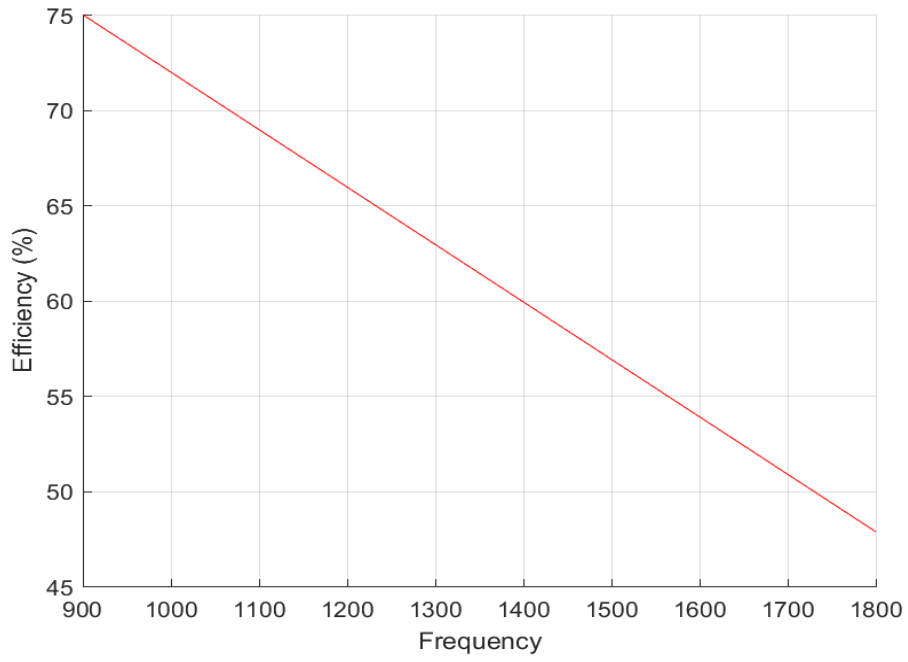
Tr1 S11 Log Mag 10.00dB/ Ref 0.000dB [RO]



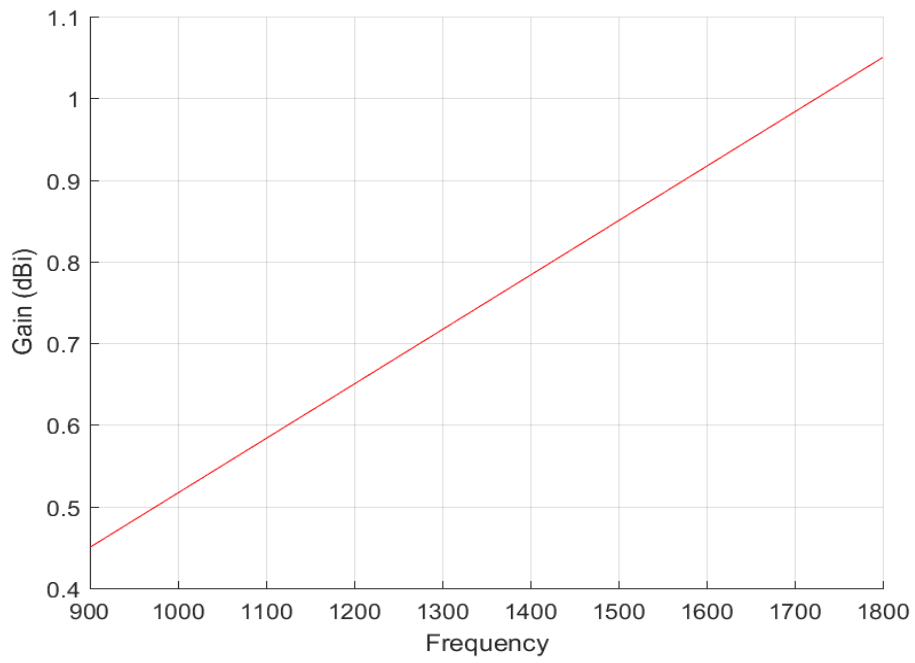
S11 SWR 1.000/ Ref 1.000 [RO]



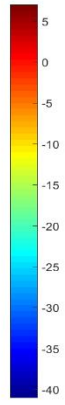
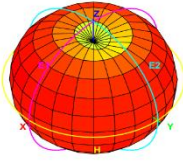
Total\_Efficiency (%)



Total\_Gain (dBi)



Total\_3D\_Side View 1\_900MHz



Total\_3D\_Side View 1\_1.8GHz

