



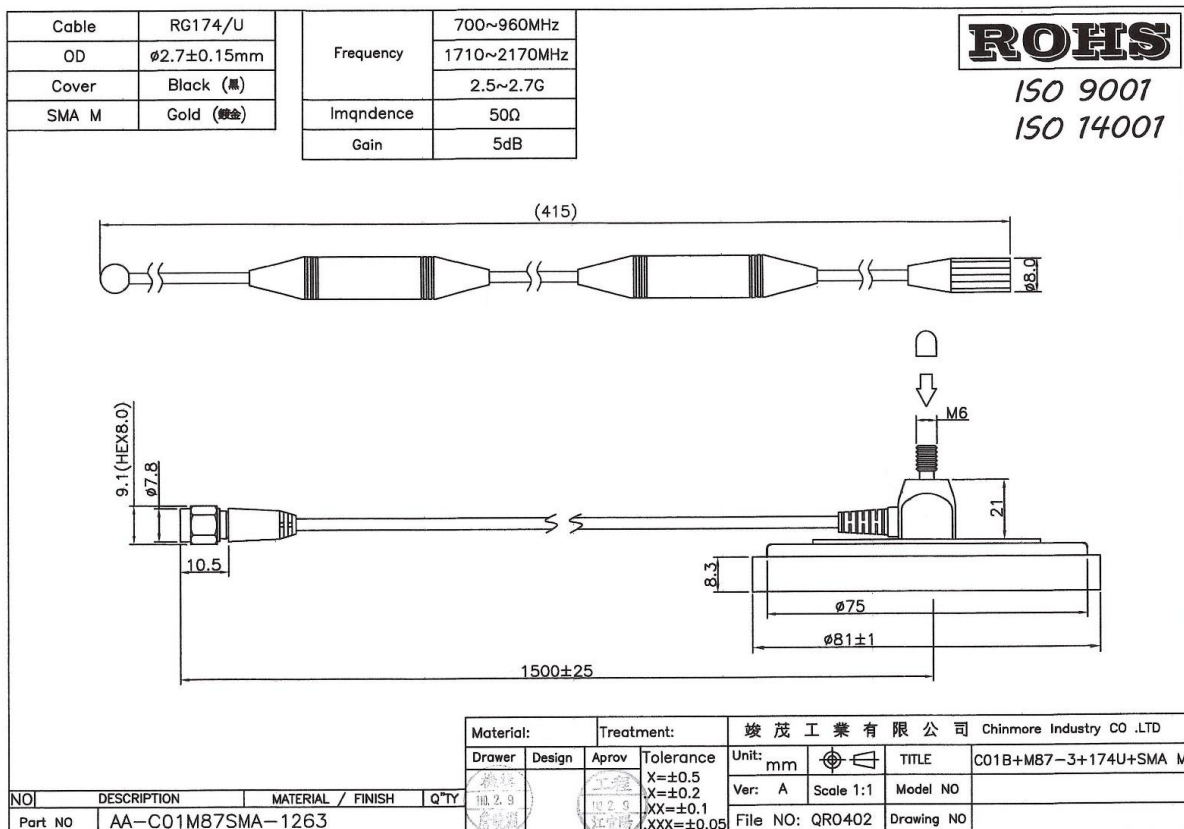
# CHINMORE INDUSTRY CO.,LTD

## Specification

Magnetic Mount Base with Whip Antenna for 4G/LTE

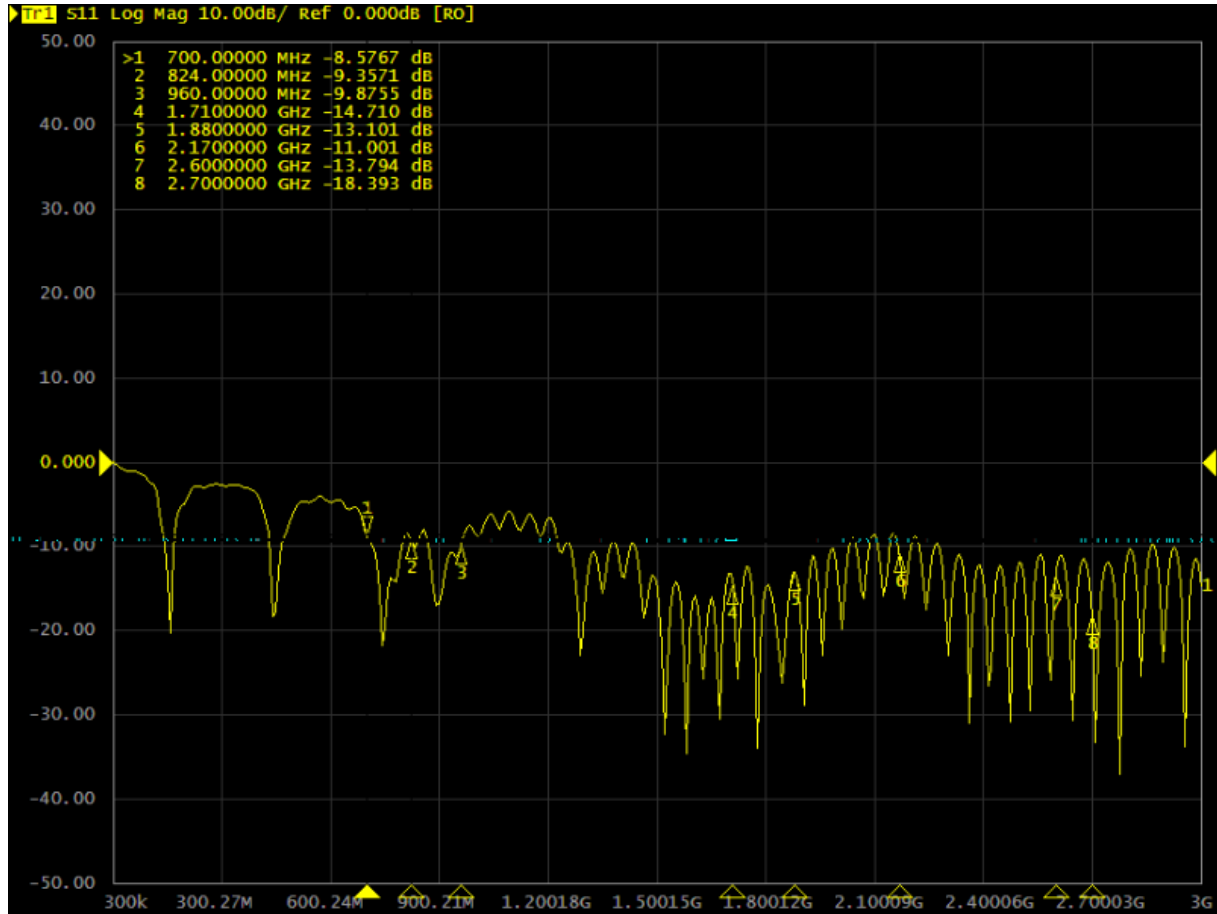
1. *Chinmore's* No: AA-C01M87SMA-1263
2. Frequency: 700~2700 MHz
3. VSWR: 2.0:1
4. Cable: RG-174 1.5M
5. Connector: SMA M
6. Polarization: Vertical
7. Bandwidth:  $\leq 260$  MHz

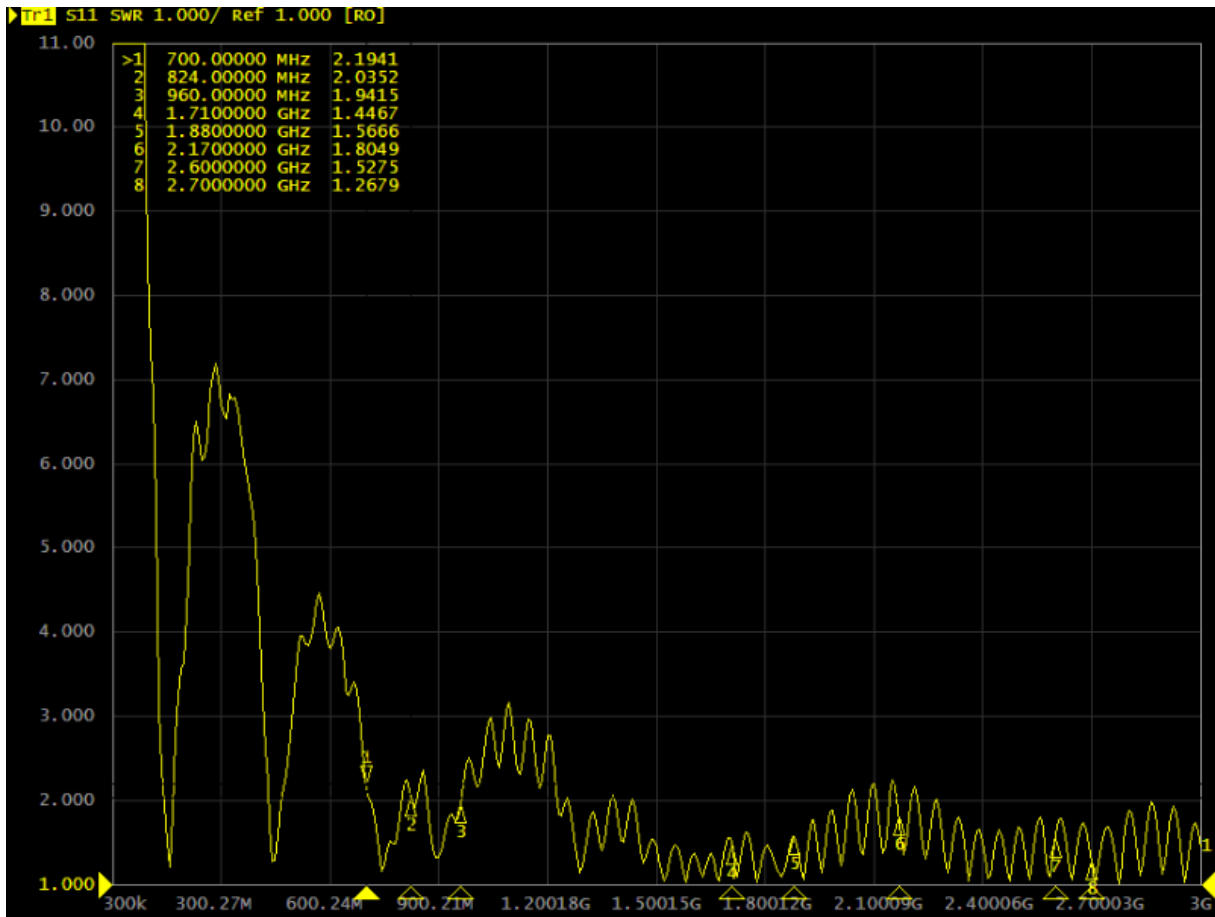
✧RoHS Compliant



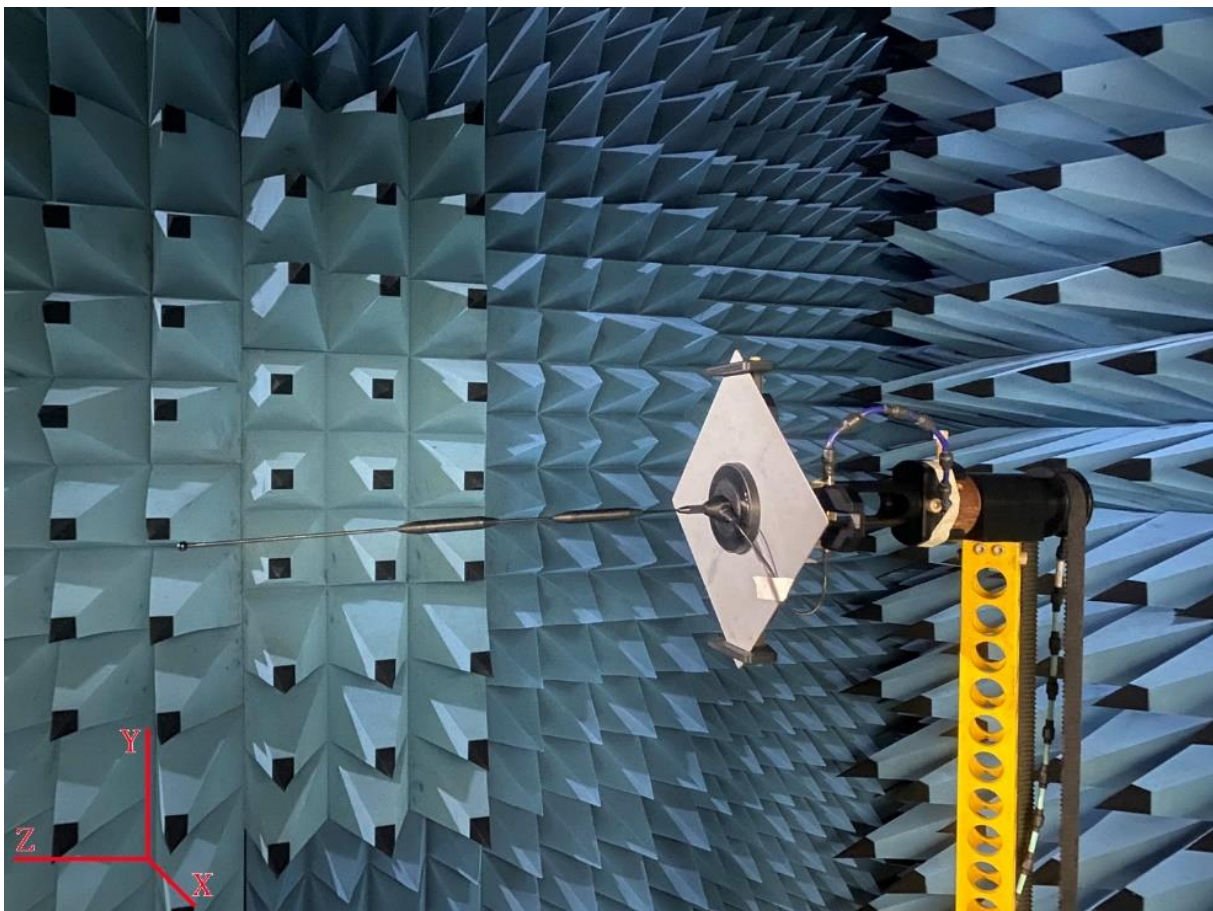
Frequency (MHz)	Return Loss (dB)	VSWR	Efficiency (%)	Gain (dB)
700	-8.57	2.19	24.43	-2.24
824	-9.35	2.03	39.99	-0.01
960	-9.87	1.94	48.87	0.64
1710	-14.71	1.44	47.53	1.07
1880	-13.10	1.56	49.32	3.36
2170	-11.00	1.80	45.6	3.4
2600	-13.79	1.52	48.42	2.41
2700	-18.39	1.26	61.66	4.42

Test Data (Return Loss & VSWR)



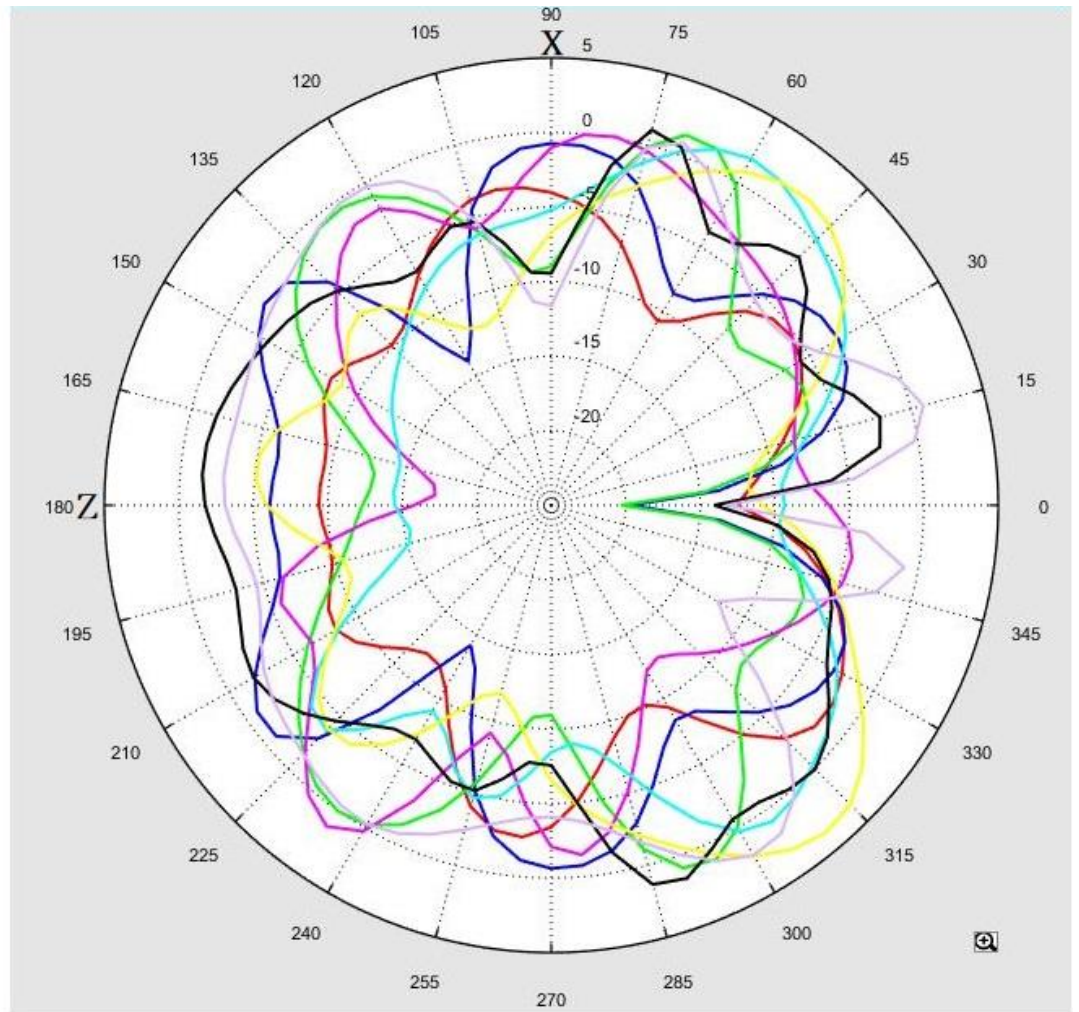


3D Test Photo

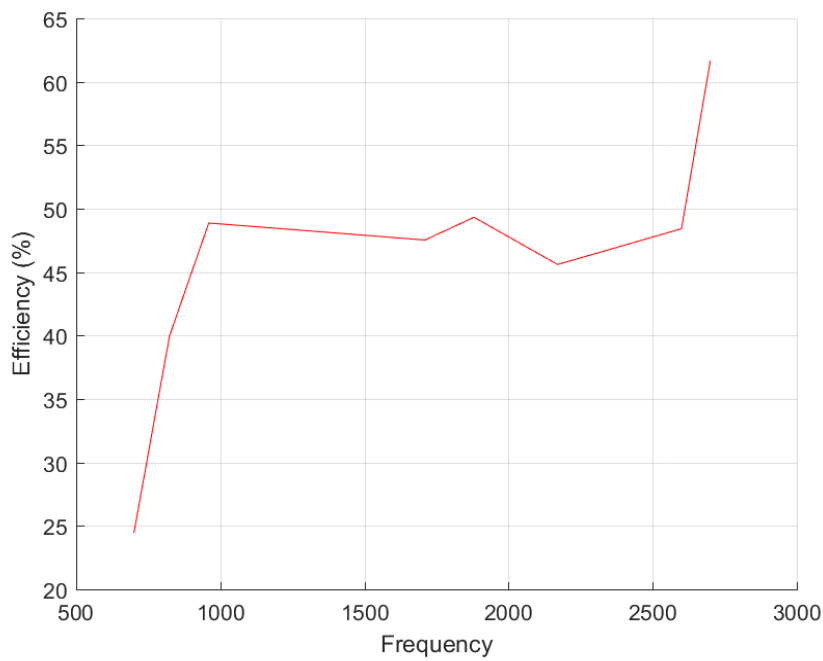


# 3D Test Data

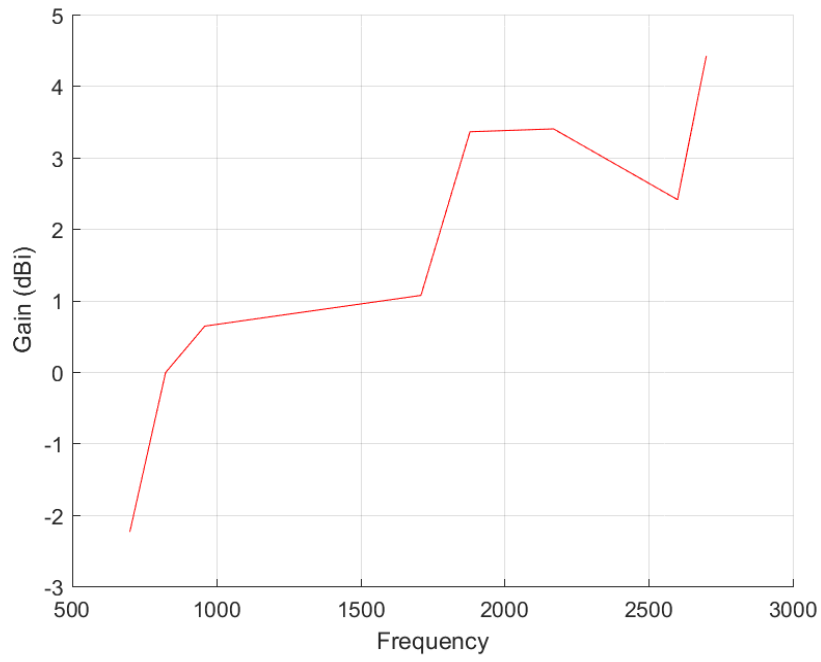
Freq. / Chan.	Color
700MHz	Red
824MHz	Blue
960MHz	Green
1.71GHz	Magenta
1.88GHz	Cyan
2.17GHz	Yellow
2.6GHz	Black
2.7GHz	Purple



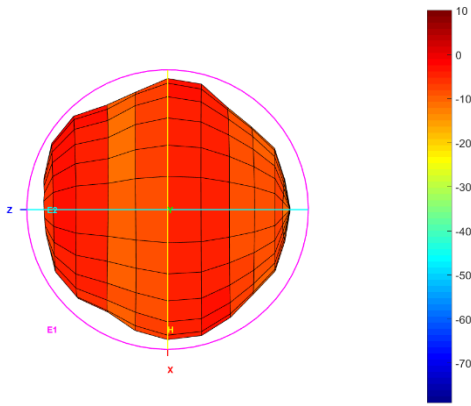
Total\_Efficiency (%)



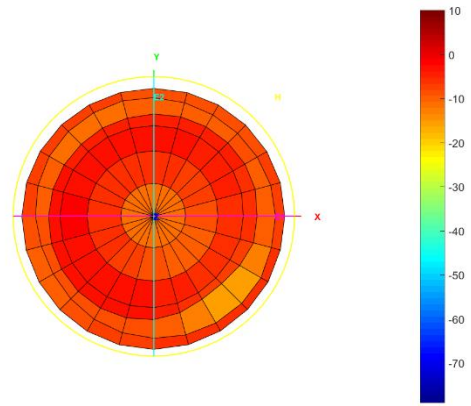
# Total\_Gain (dBi)



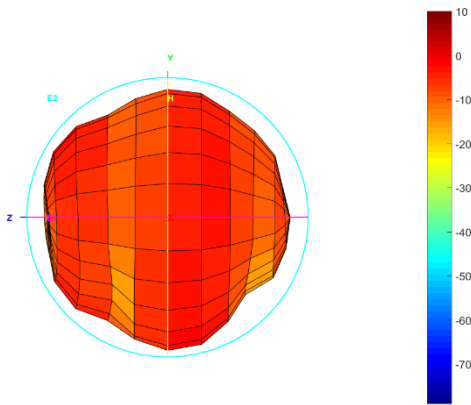
Total\_3D\_Top View\_700MHz



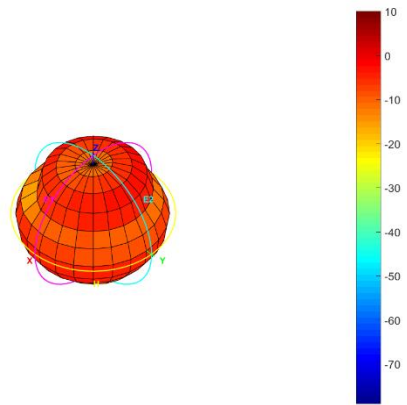
Total\_3D\_Front View\_700MHz



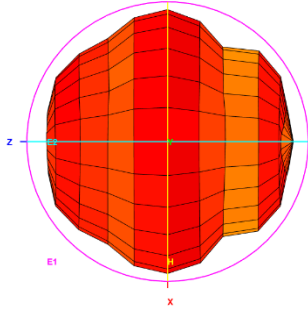
Total\_3D\_Left View\_700MHz



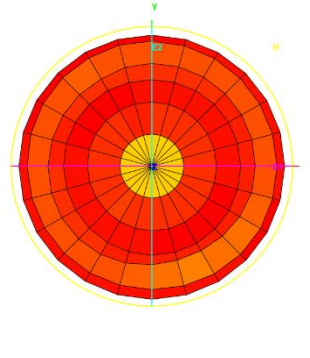
Total\_3D\_Side View 1\_700MHz



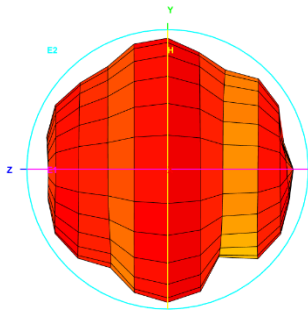
Total\_3D\_Top View\_824MHz



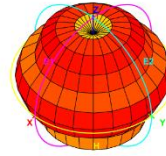
Total\_3D\_Front View\_824MHz



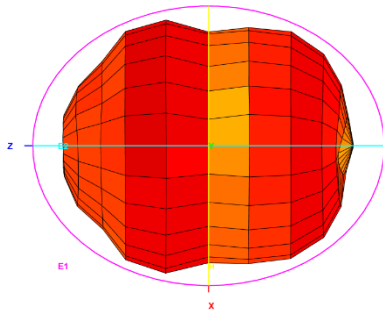
Total\_3D\_Left View\_824MHz



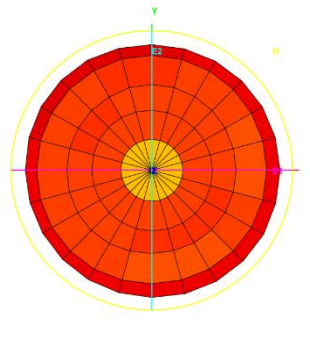
Total\_3D\_Side View 1\_824MHz



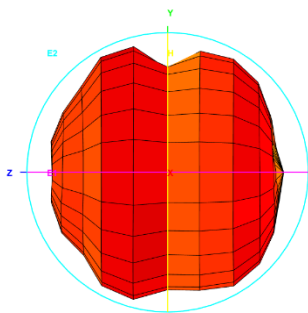
Total\_3D\_Top View\_960MHz



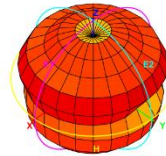
Total\_3D\_Front View\_960MHz



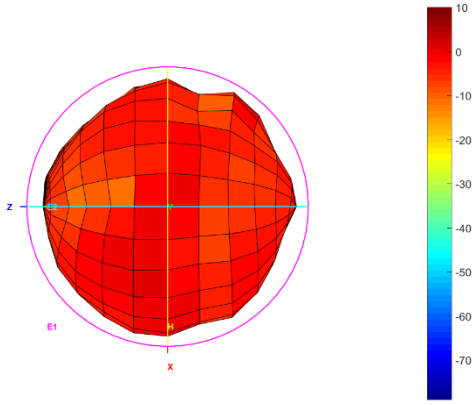
Total\_3D\_Left View\_960MHz



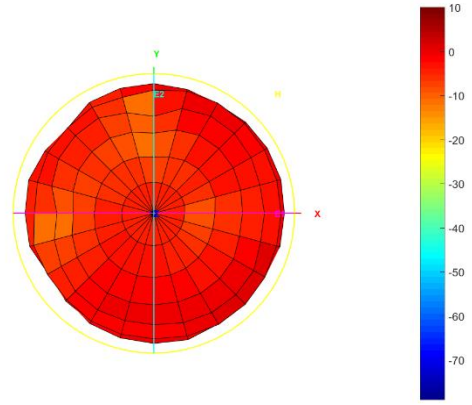
Total\_3D\_Side View 1\_960MHz



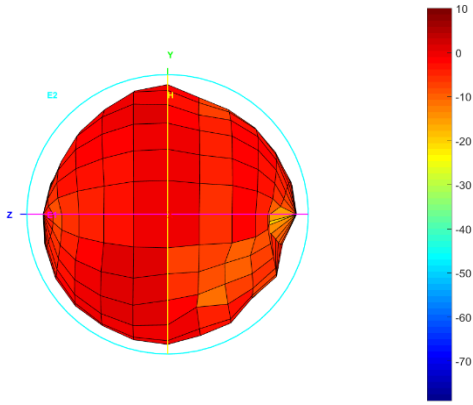
Total\_3D\_Top View\_1.71GHz



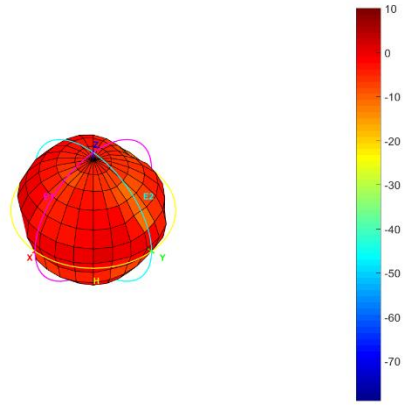
Total\_3D\_Front View\_1.71GHz



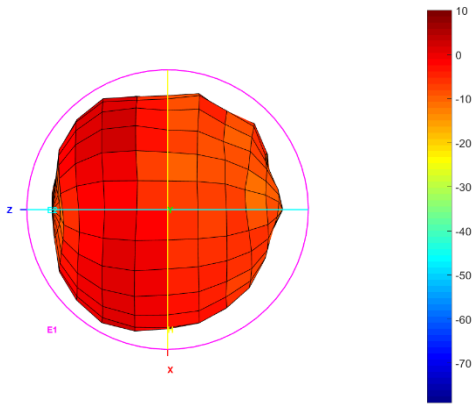
Total\_3D\_Left View\_1.71GHz



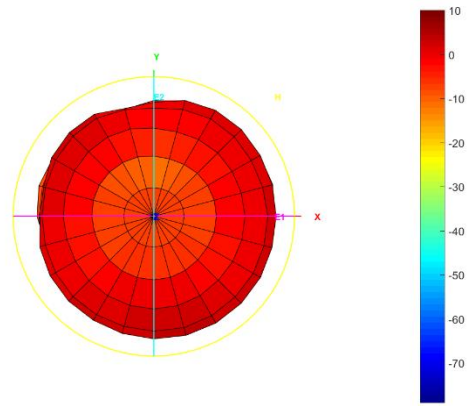
Total\_3D\_Side View\_1.71GHz



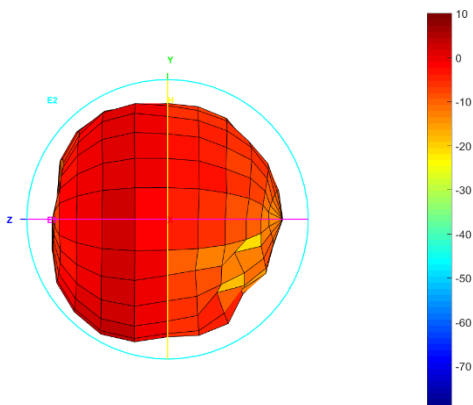
Total\_3D\_Top View\_1.88GHz



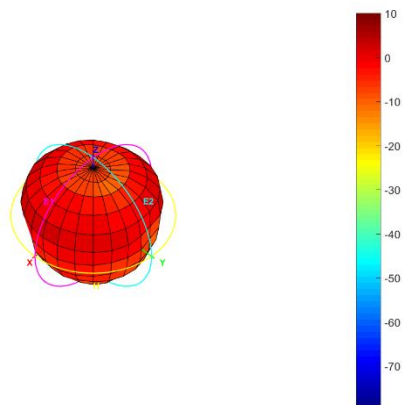
Total\_3D\_Front View\_1.88GHz



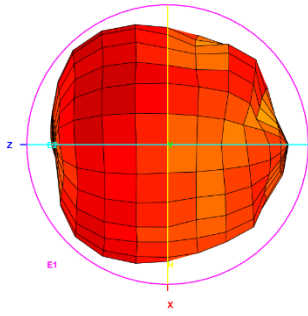
Total\_3D\_Left View\_1.88GHz



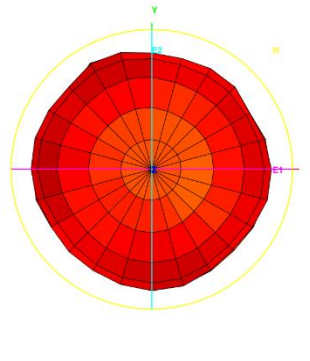
Total\_3D\_Side View\_1.88GHz



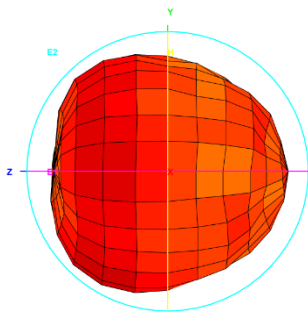
Total\_3D\_Top View\_2.17GHz



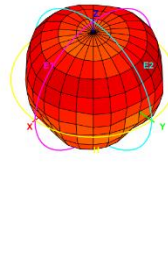
Total\_3D\_Front View\_2.17GHz



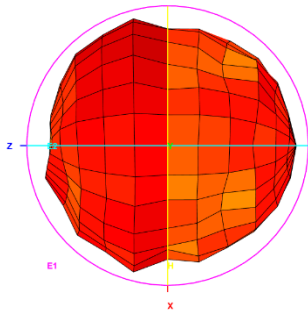
Total\_3D\_Left View\_2.17GHz



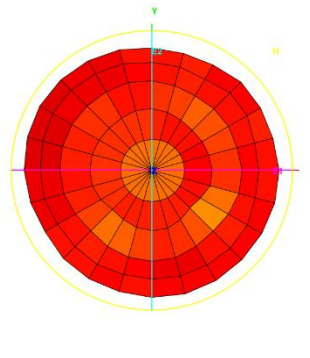
Total\_3D\_Side View 1\_2.17GHz



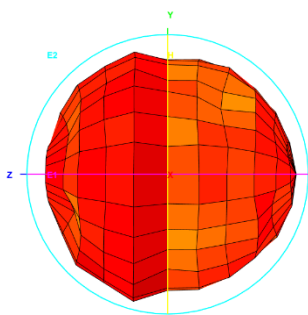
Total\_3D\_Top View\_2.6GHz



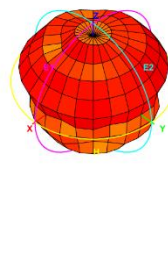
Total\_3D\_Front View\_2.6GHz



Total\_3D\_Left View\_2.6GHz

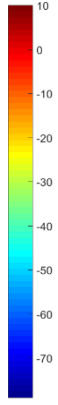
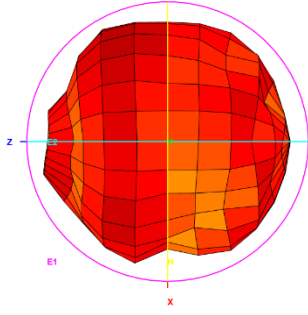


Total\_3D\_Side View 1\_2.6GHz

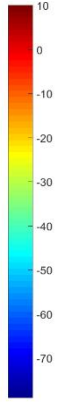
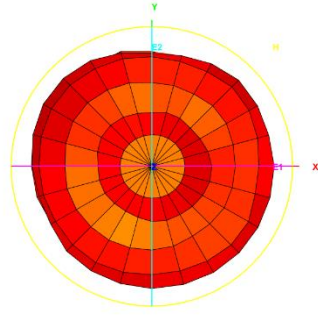




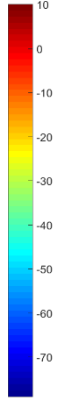
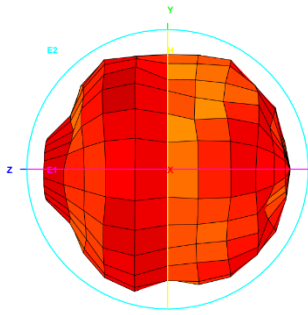
Total\_3D\_Top View\_2.7GHz



Total\_3D\_Front View\_2.7GHz



Total\_3D\_Left View\_2.7GHz



Total\_3D\_Side View 1\_2.7GHz

