

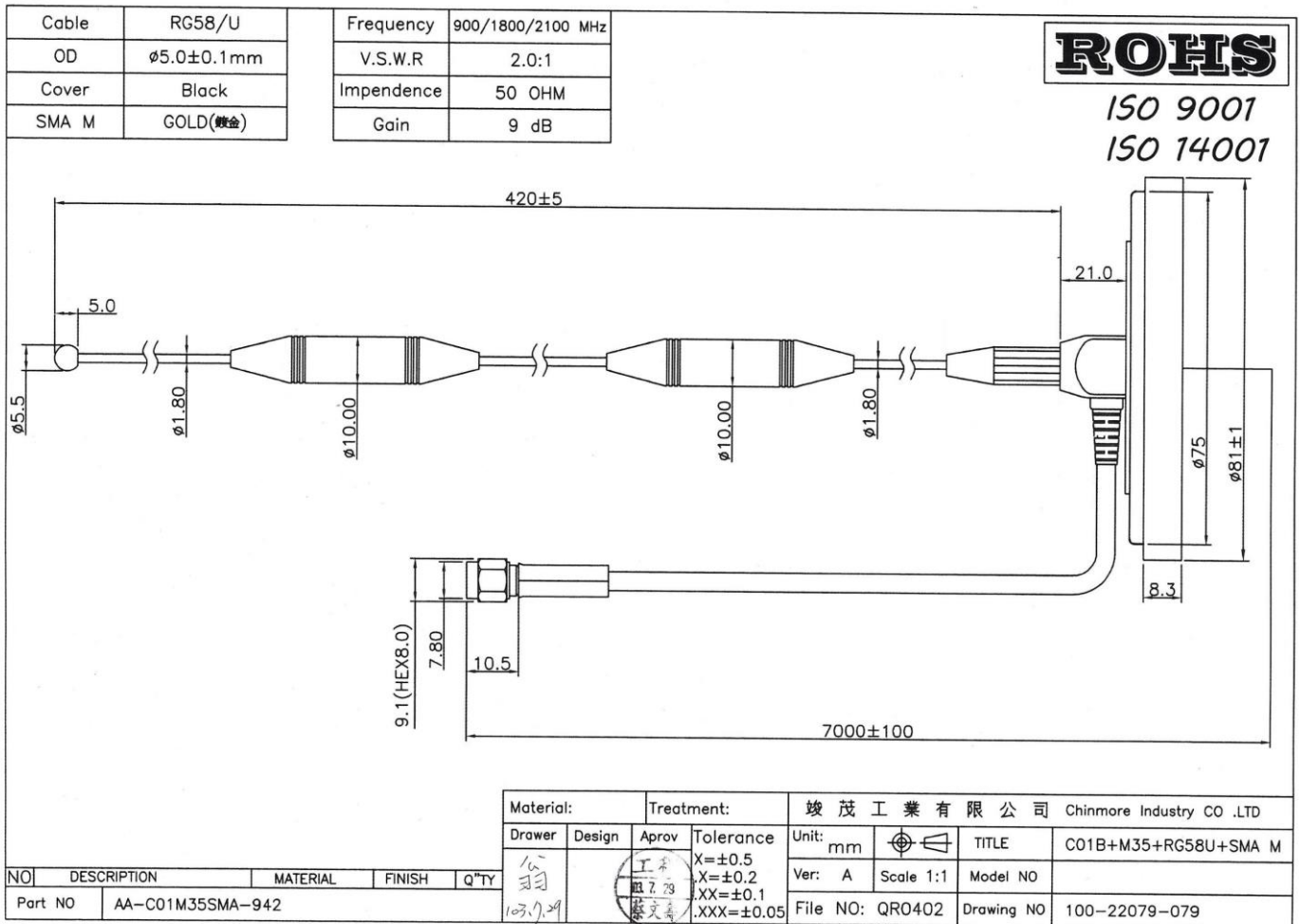


# CHINMORE INDUSTRY CO.,LTD

## Specification

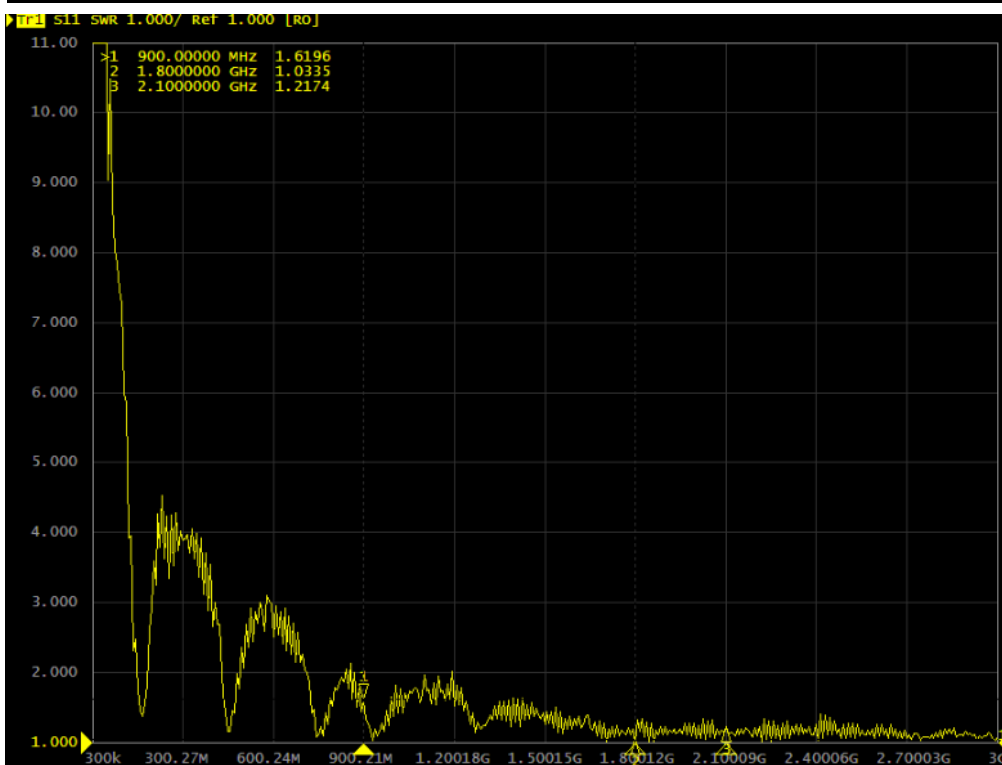
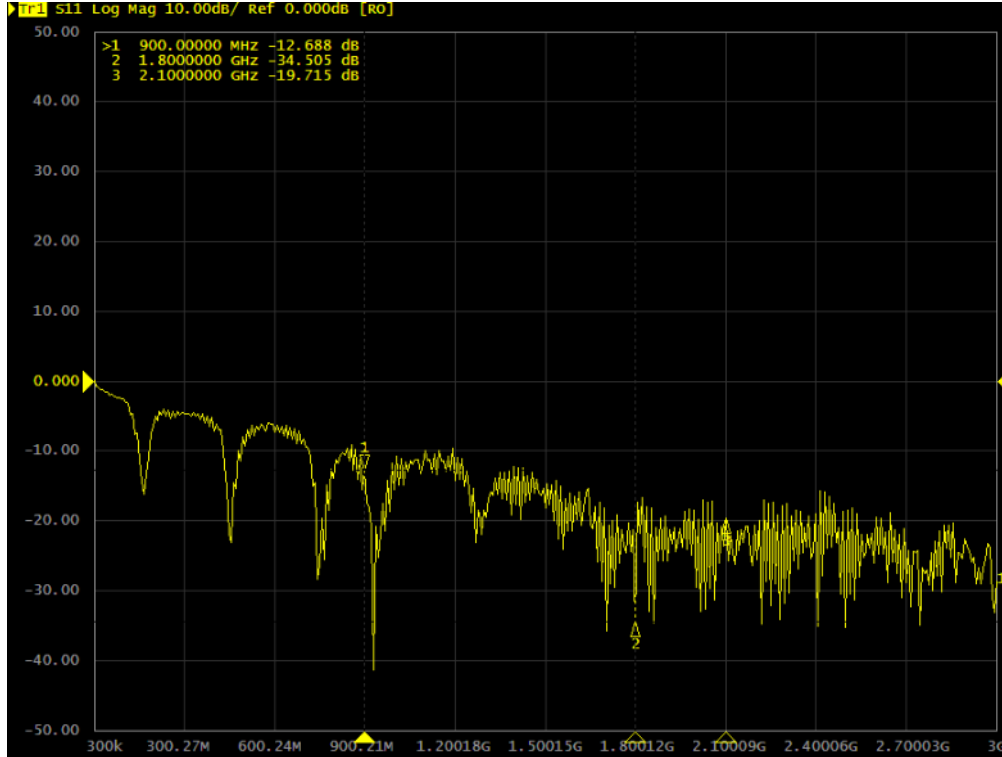
1. Magnetic Mount Base with Whip Antenna for 3G
2. *Chinmore's* No: AA-C01M35SMA-942
3. Frequency: 900/1800/2100 MHz
4. VSWR: 2.0:1
5. Cable: RG58 7M
6. Connector: SMA M

※RoHS Compliant

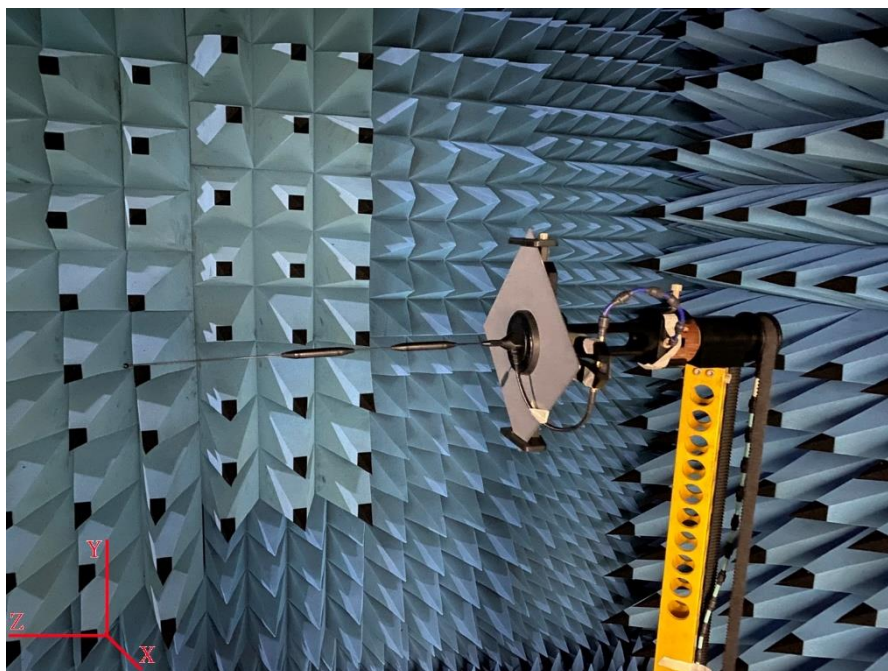


Frequency (MHz)	Return Loss (dB)	VSWR	Efficiency (%)	Gain (dBi)
900	-12.68	1.61	47.64	0.91
1800	-34.50	1.03	56.89	1.86
2100	-19.71	1.21	73.45	5.8

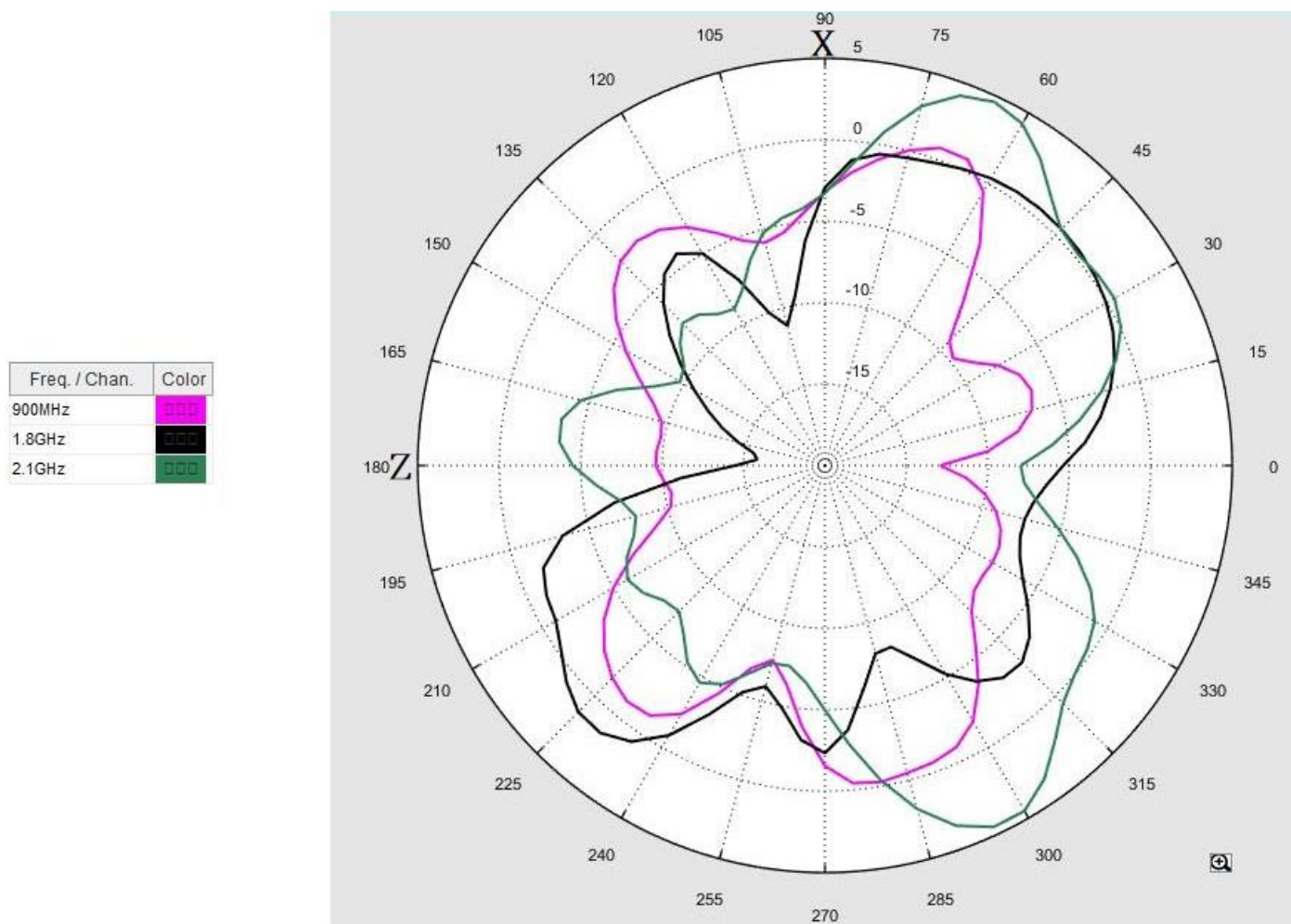
### Test Report (Return Loss & VSWR)



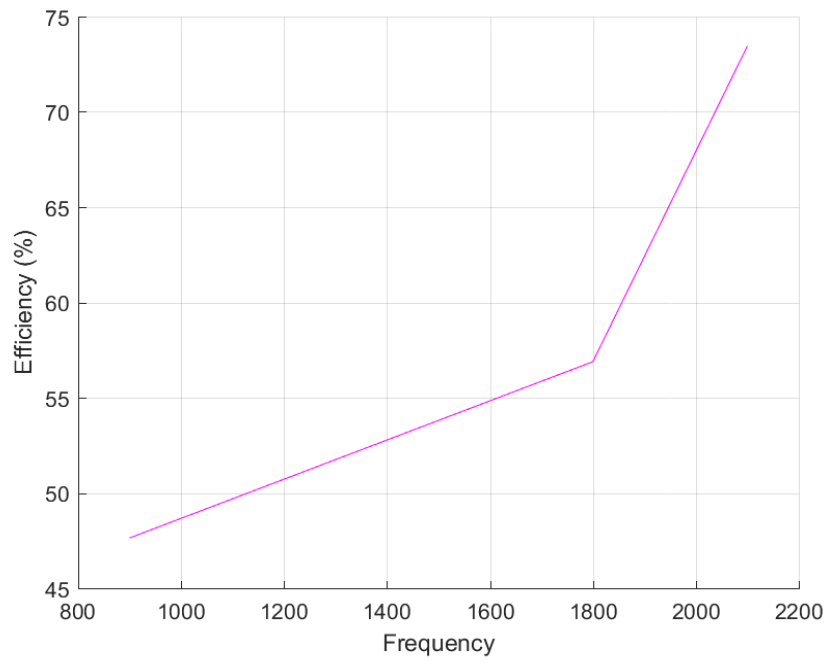
### 3D Test Photo



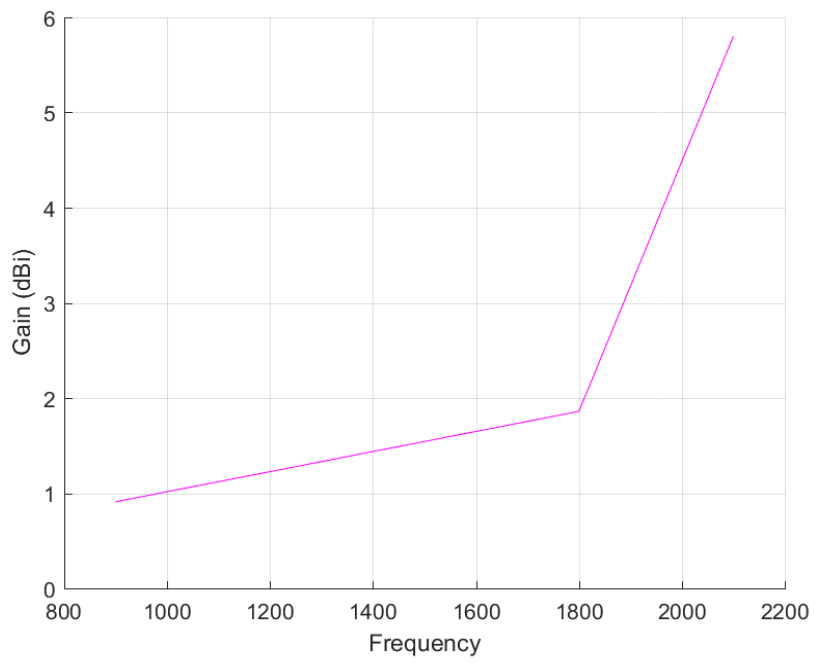
### 3D Test Data



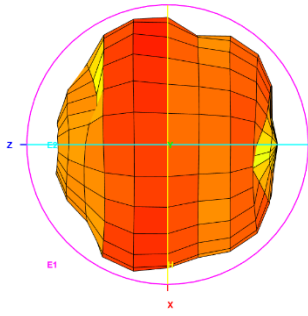
Total\_Efficiency (%)



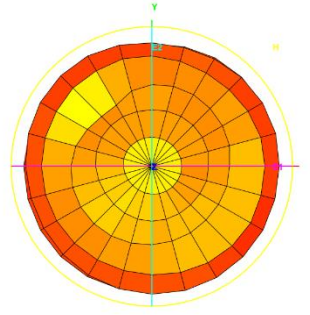
Total\_Gain (dBi)



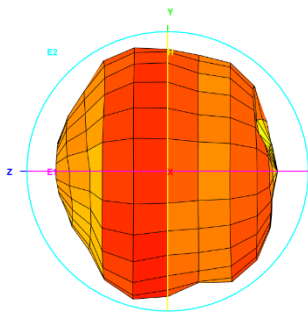
Total\_3D\_Top View\_900MHz



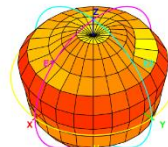
Total\_3D\_Front View\_900MHz



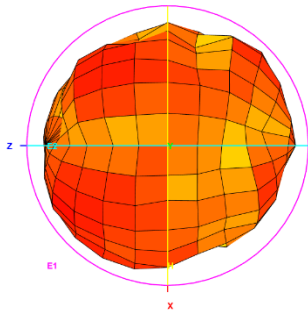
Total\_3D\_Left View\_900MHz



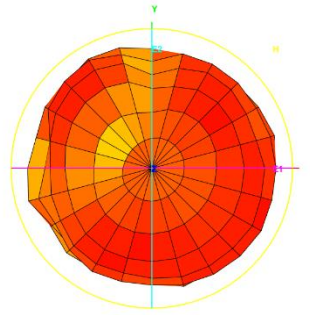
Total\_3D\_Side View 1\_900MHz



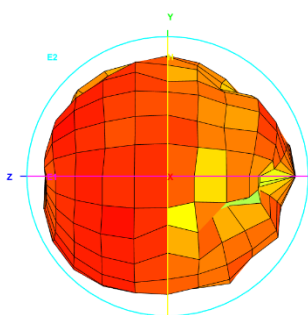
Total\_3D\_Top View\_1.8GHz



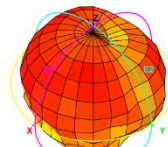
Total\_3D\_Front View\_1.8GHz



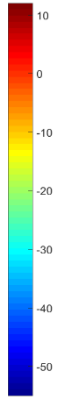
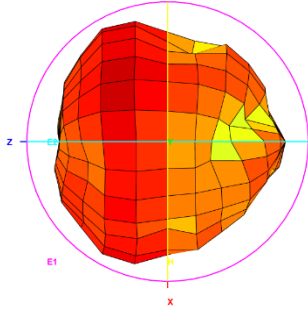
Total\_3D\_Left View\_1.8GHz



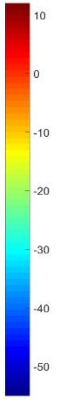
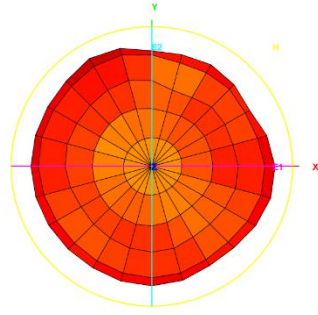
Total\_3D\_Side View 1\_1.8GHz



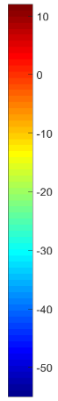
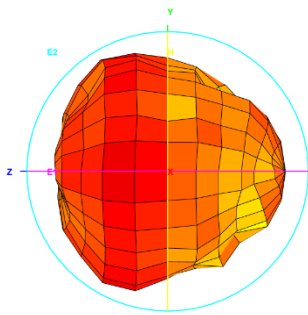
Total\_3D\_Top View\_2.1GHz



Total\_3D\_Front View\_2.1GHz



Total\_3D\_Left View\_2.1GHz



Total\_3D\_Side View 1\_2.1GHz

