



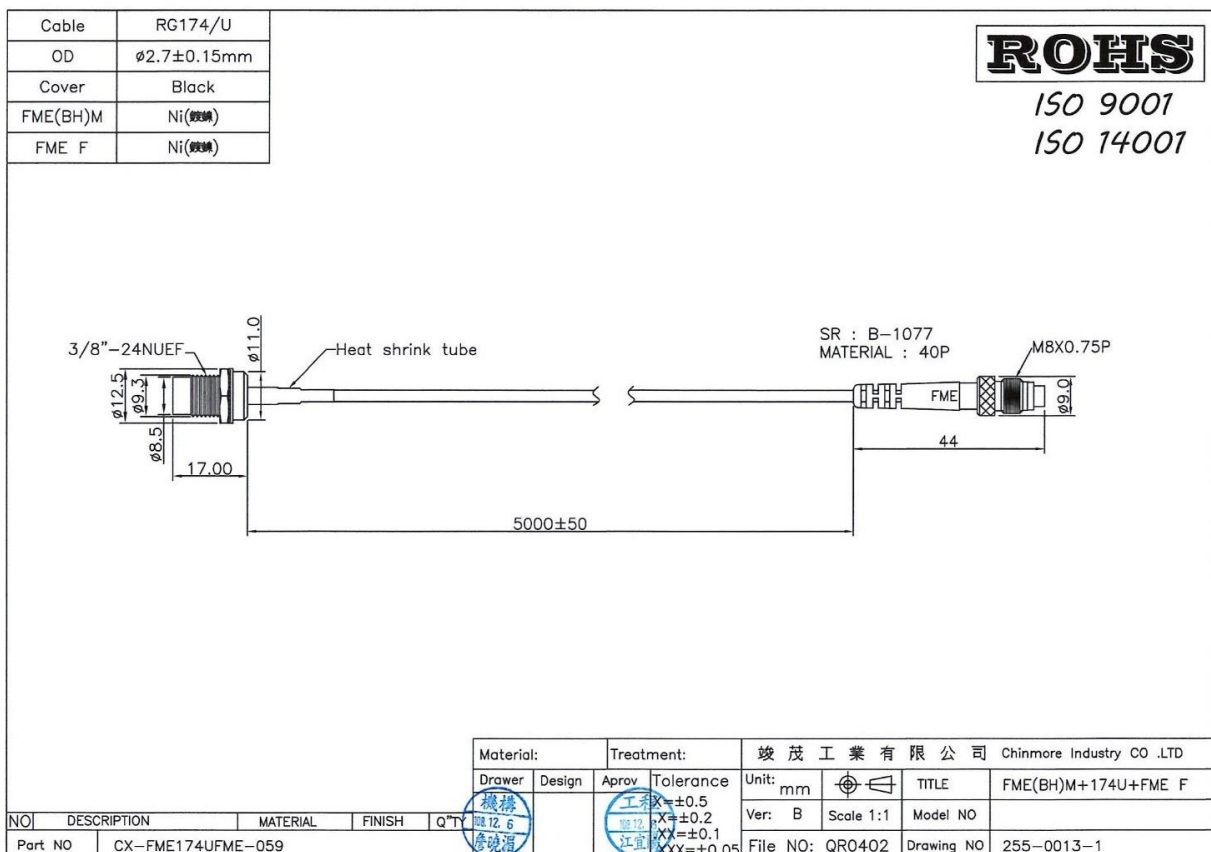
CHINMORE INDUSTRY CO.,LTD

Specification

1. Cable Assembly with RF Connector
2. *Chinmore's* No: CX-FME174UFME-059
3. Frequency: 600MHZ~3GHz
4. VSWR: 2.0:1
5. Cable: RG-174 5M
6. Connector: FME M Bulkhead & FME F

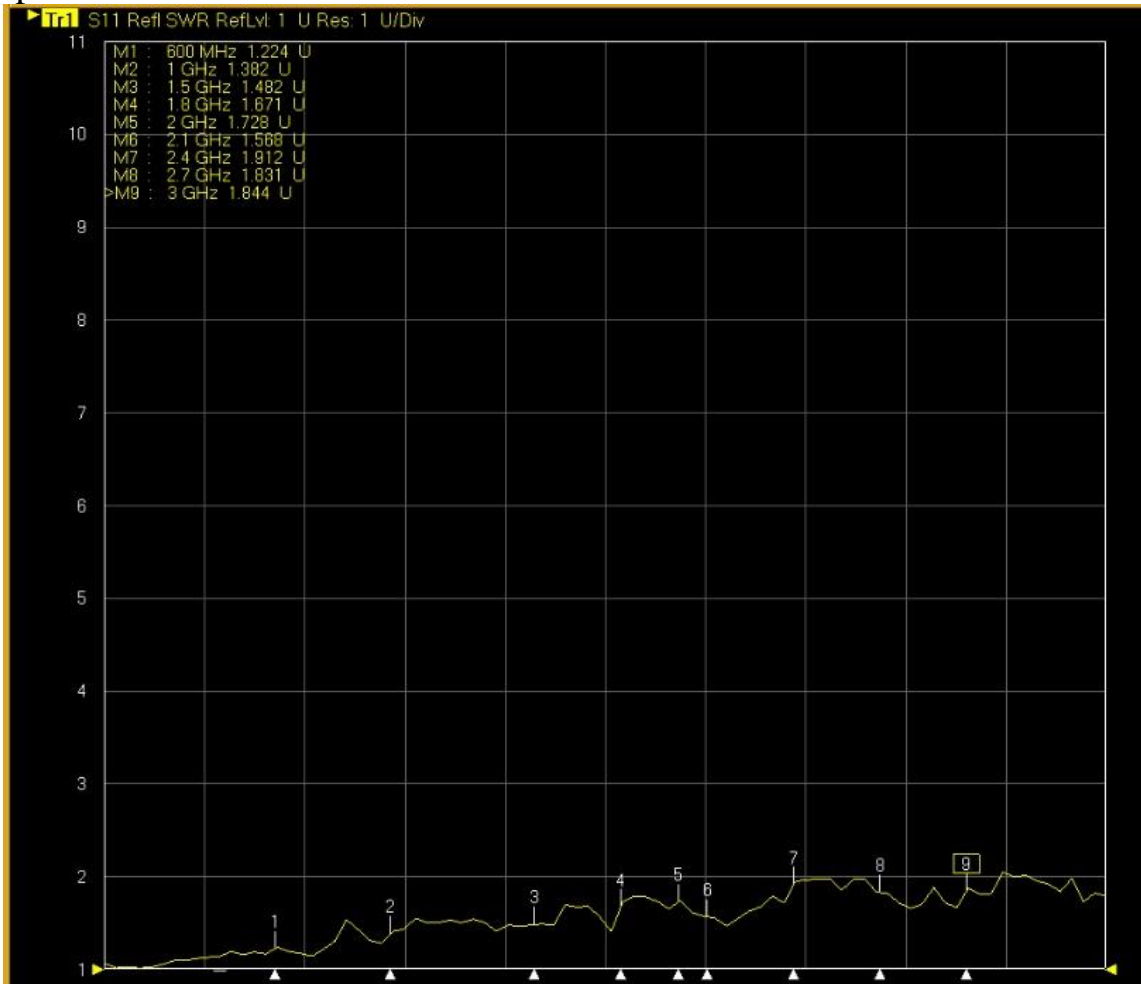
✧RoHS Compliant

✧ISO 9001 & ISO 14001



Frequency (MHz)	VSWR	Insertion Loss (dB)
600 MHz	1.22	-4.42
1000 MHz	1.38	-5.90
1500 MHz	1.48	-7.52
1800 MHz	1.67	-8.58
2000 MHz	1.72	-9.29
2100 MHz	1.56	-9.40
2400 MHz	1.91	-10.41
2700 MHz	1.83	-11.23
3000 MHz	1.84	-11.95

TEST Report



Tr2 S12 Trans Load RefLvl: 0 dB Res: 10 dB/Div

