



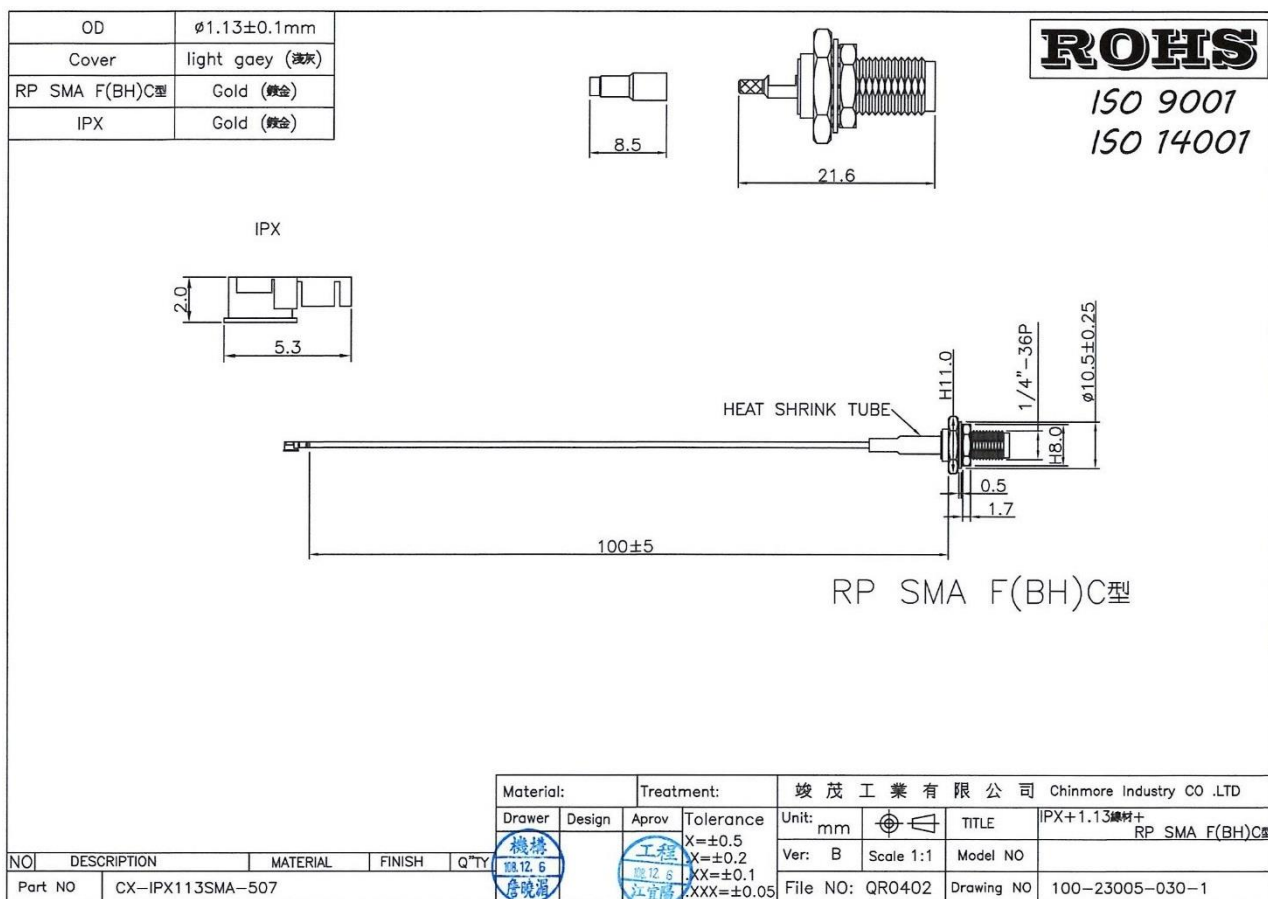
CHINMORE INDUSTRY CO.,LTD

Specification

1. Mini Coaxial Cable Assembly with RF Connector
2. *Chinmore's* No: CX-SMA113IPX-507
3. Frequency: 600MHZ~3GHz
4. VSWR: 2.0:1
5. Cable: Ø1.13 (Gray)
6. Connector: RP SMA F Bulkhead C TYPE

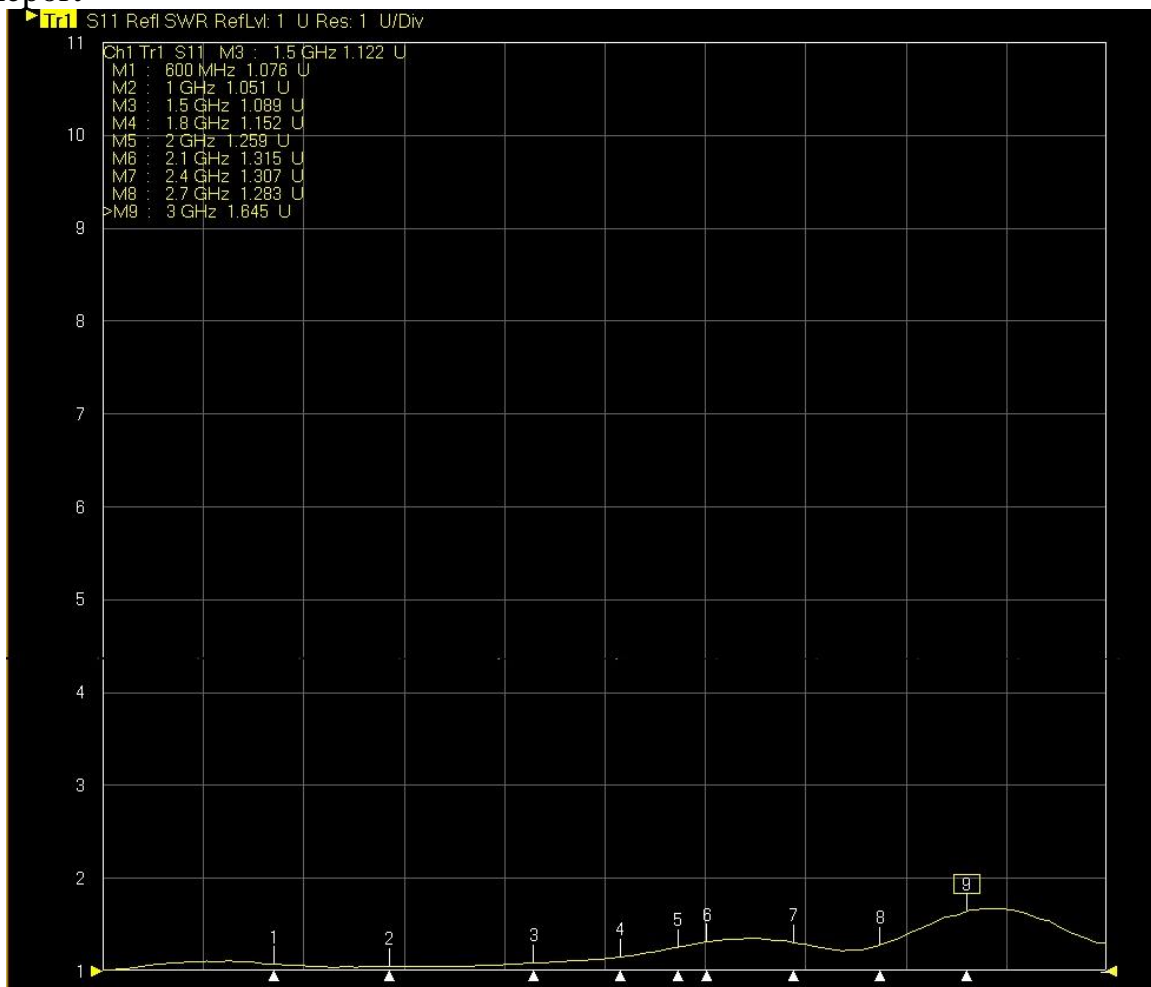
✧RoHS Compliant

✧ISO 9001 & ISO 14001



Frequency (MHz)	VSWR	Insertion Loss (dB)
600 MHz	1.07	-0.46
1000 MHz	1.05	-0.60
1500 MHz	1.08	-0.74
1800 MHz	1.15	-0.84
2000 MHz	1.25	-0.94
2100 MHz	1.31	-0.95
2400 MHz	1.30	-1.02
2700 MHz	1.28	-1.08
3000 MHz	1.64	-1.41

TEST Report



Tr2 S12 Trans LocM RefLvl: 0 dB Res: 10 dB/Div

