



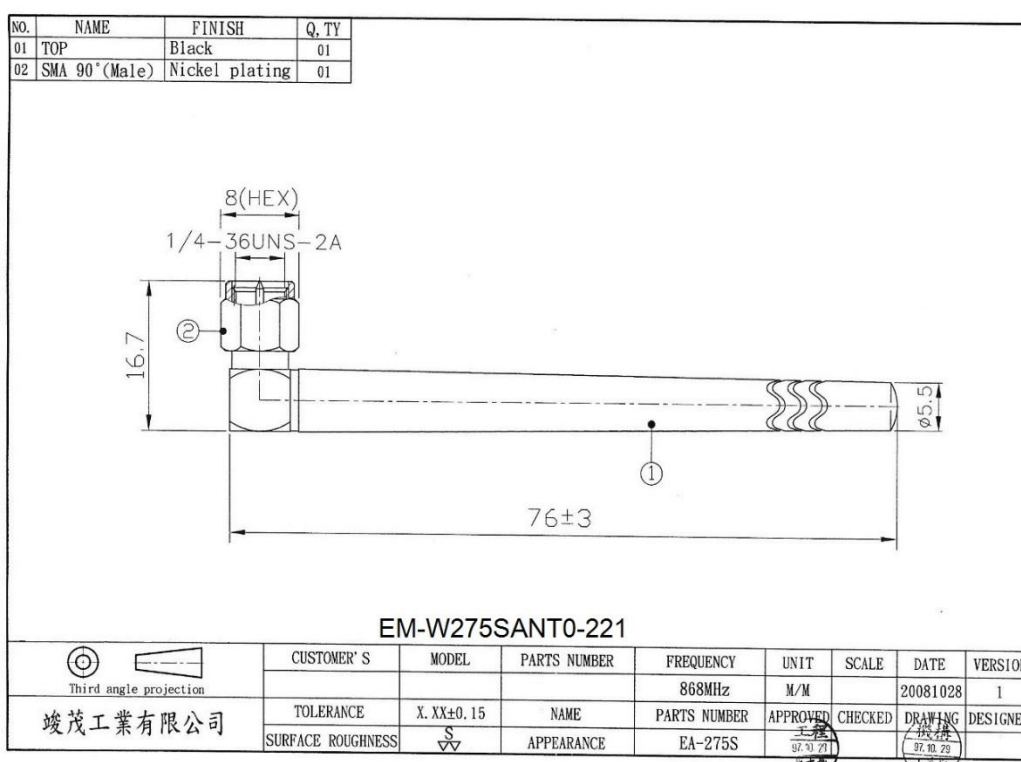
CHINMORE INDUSTRY CO.,LTD

Specification

1. Product Type: Rubber Stubby Antenna for 868MHz
2. *Chinmore's* No: EM-W275SANT0-221
3. Frequency: 868 MHz
4. VSWR: 2.0:1
5. Impedance: 50 Ω
6. Connector: SMA (M) ST
7. Operating Temperature Range: -20°C ~ +60°C
8. Storage Temperature Range: -30°C ~ +70°C

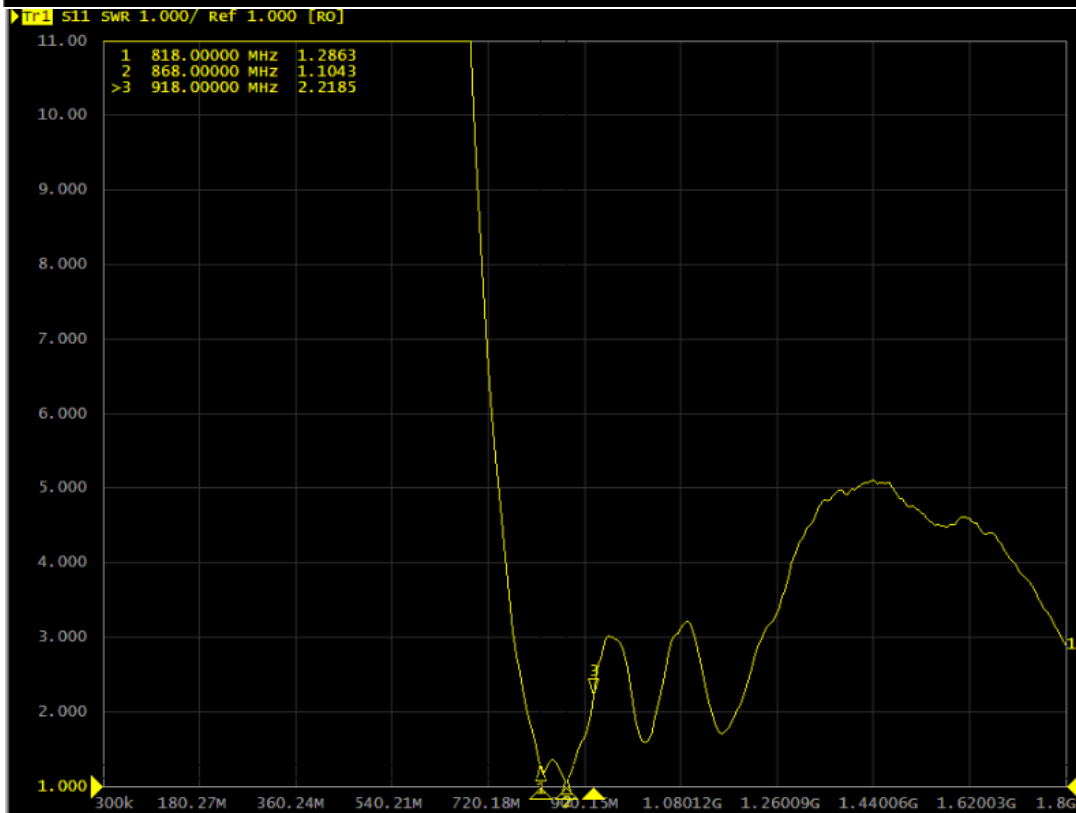
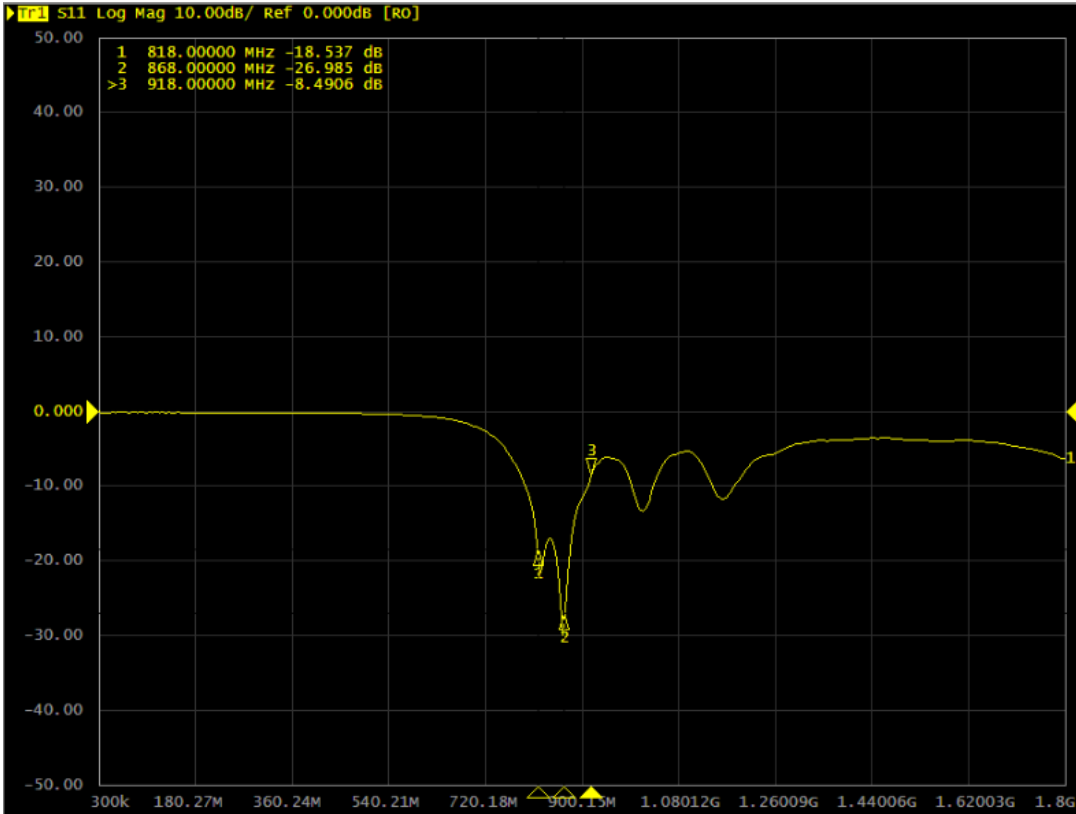
※RoHS Compliant

※ISO 9001:2015 & ISO14001:2015

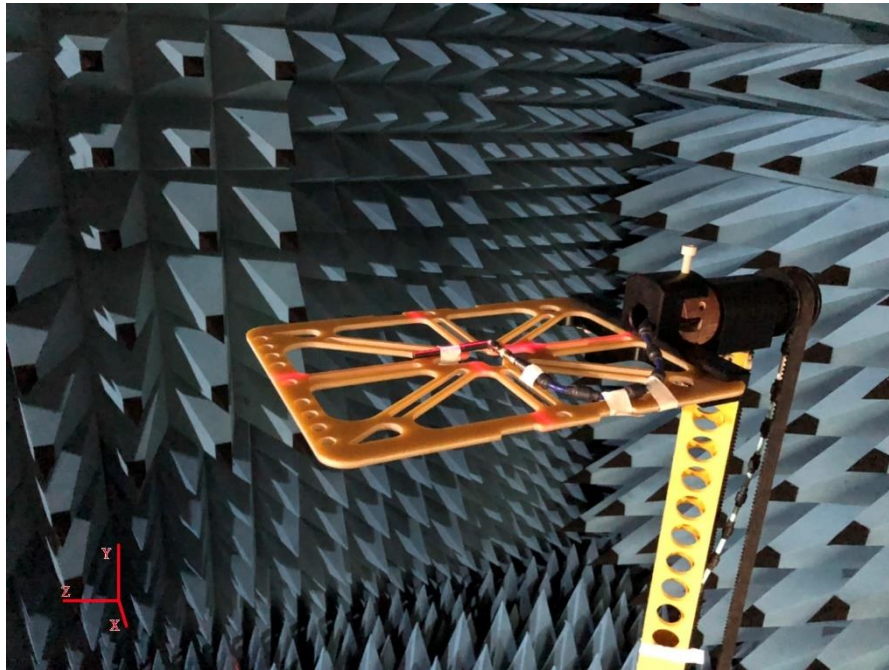


Frequency (MHz)	Return Loss (dB)	VSWR	Efficiency (%)	Gain (dBi)
818	-18.53	1.28	18.71	-4.01
868	-26.98	1.10	20.32	-4.45
918	-8.49	2.21	20.23	-4.03

Test Data(Return Loss & VSWR)

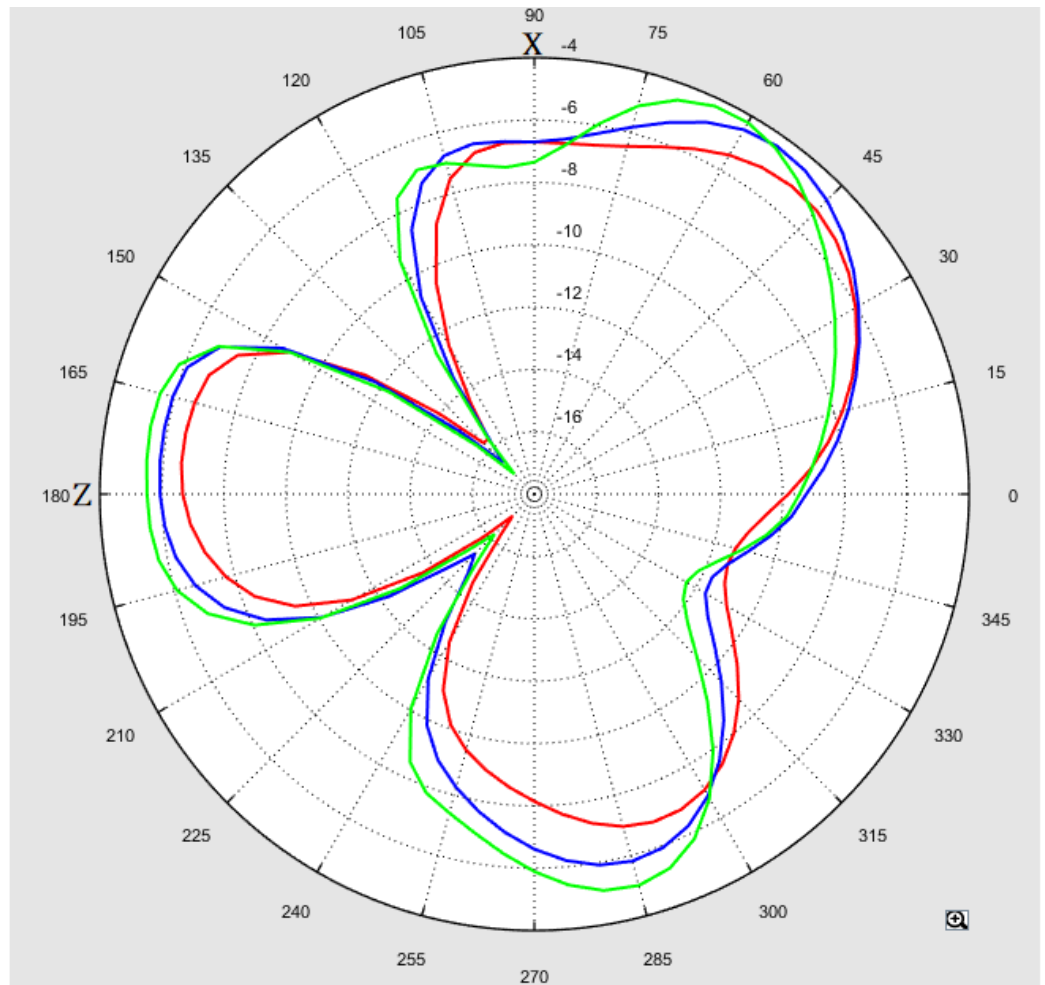


3D Test Photo

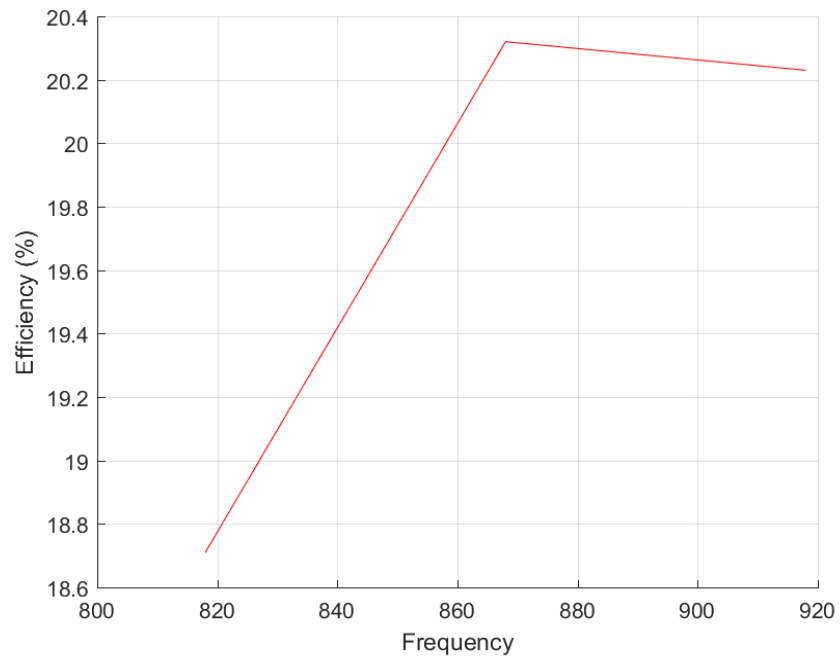


3D Test Data

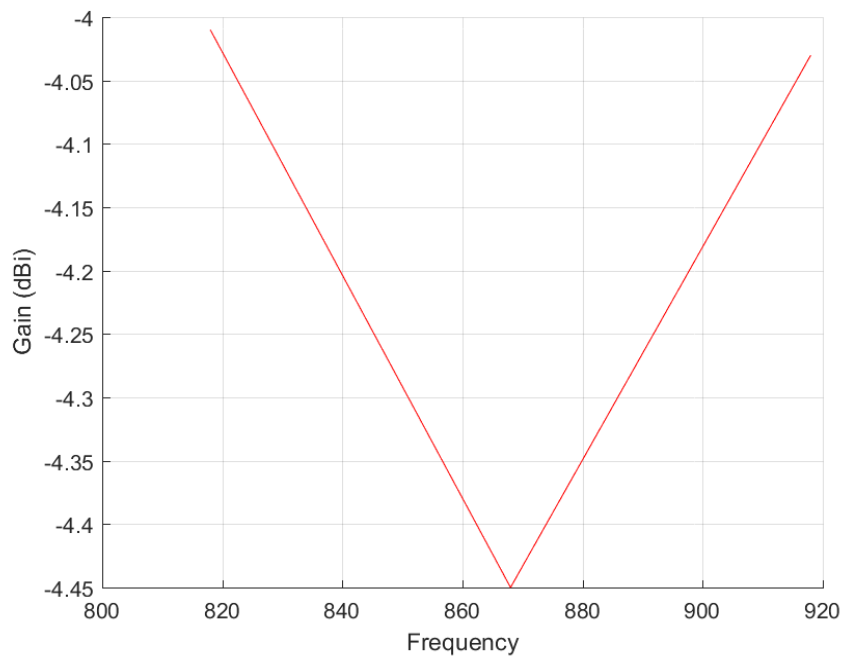
Choose	Freq. / Chan.	Color
<input checked="" type="checkbox"/>	818MHz	Red
<input checked="" type="checkbox"/>	868MHz	Blue
<input checked="" type="checkbox"/>	918MHz	Green



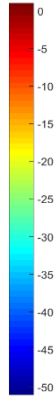
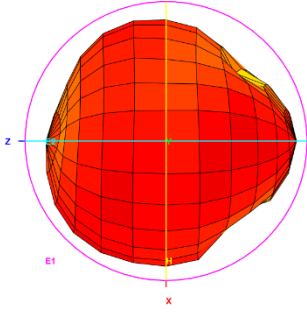
Total_Efficiency (%)



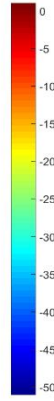
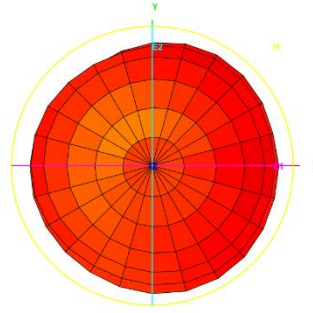
Total_Gain (dBi)



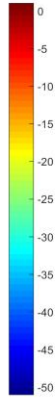
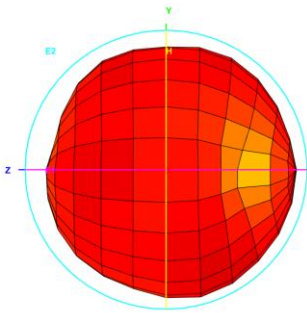
Total_3D_Top View_818MHz



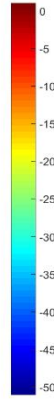
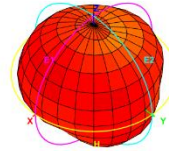
Total_3D_Front View_818MHz



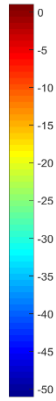
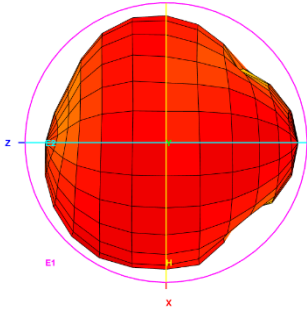
Total_3D_Left View_818MHz



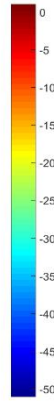
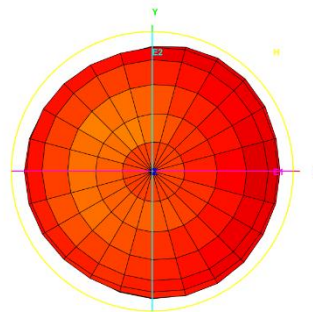
Total_3D_Side View 1_818MHz



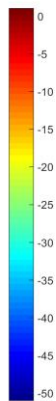
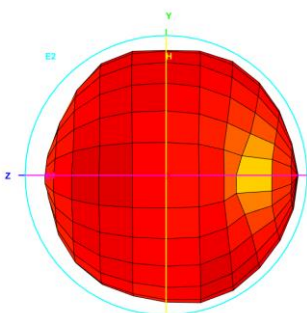
Total_3D_Top View_868MHz



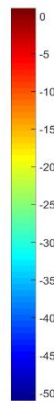
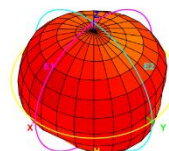
Total_3D_Front View_868MHz



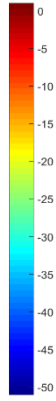
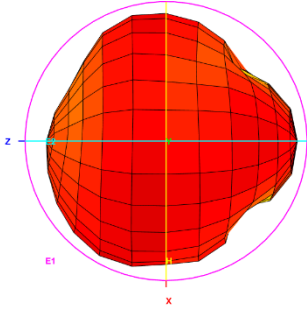
Total_3D_Left View_868MHz



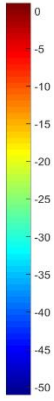
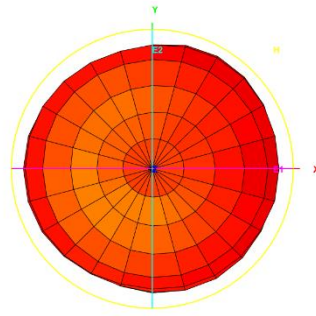
Total_3D_Side View 1_868MHz



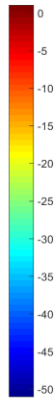
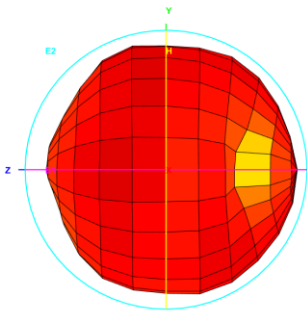
Total_3D_Top View_918MHz



Total_3D_Front View_918MHz



Total_3D_Left View_918MHz



Total_3D_Side View 1_918MHz

