



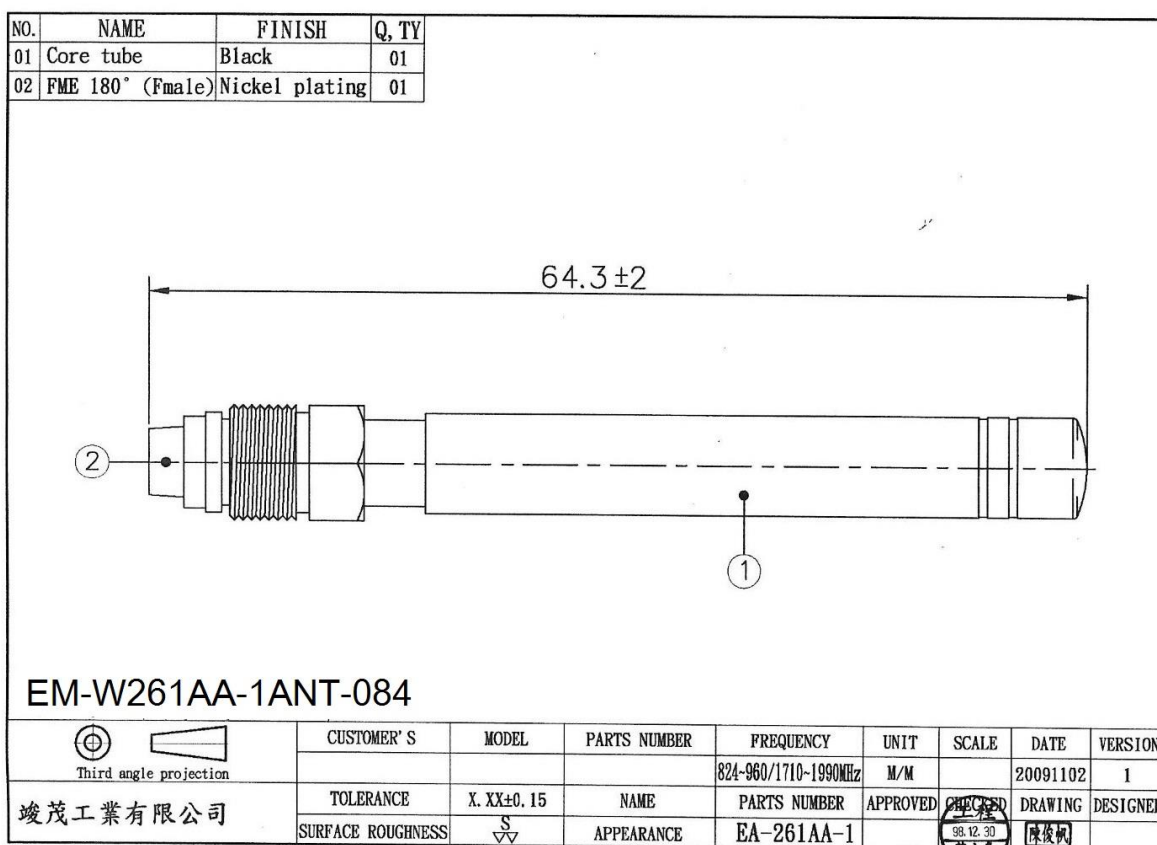
CHINMORE INDUSTRY CO.,LTD

Specification

1. External Antenna, Rubber Stubby Antenna for 3G/GSM
2. *Chinmore's* No: EM-W261AA-1ANT-084
3. Frequency: 824~960 MHz /1710~1990 MHz
4. Connector: FME F
5. Dimension: 64.3mm
6. Operating Temperature Range: -20°C~+60°C
7. Storage Temperature Range: -30°C~+70°C

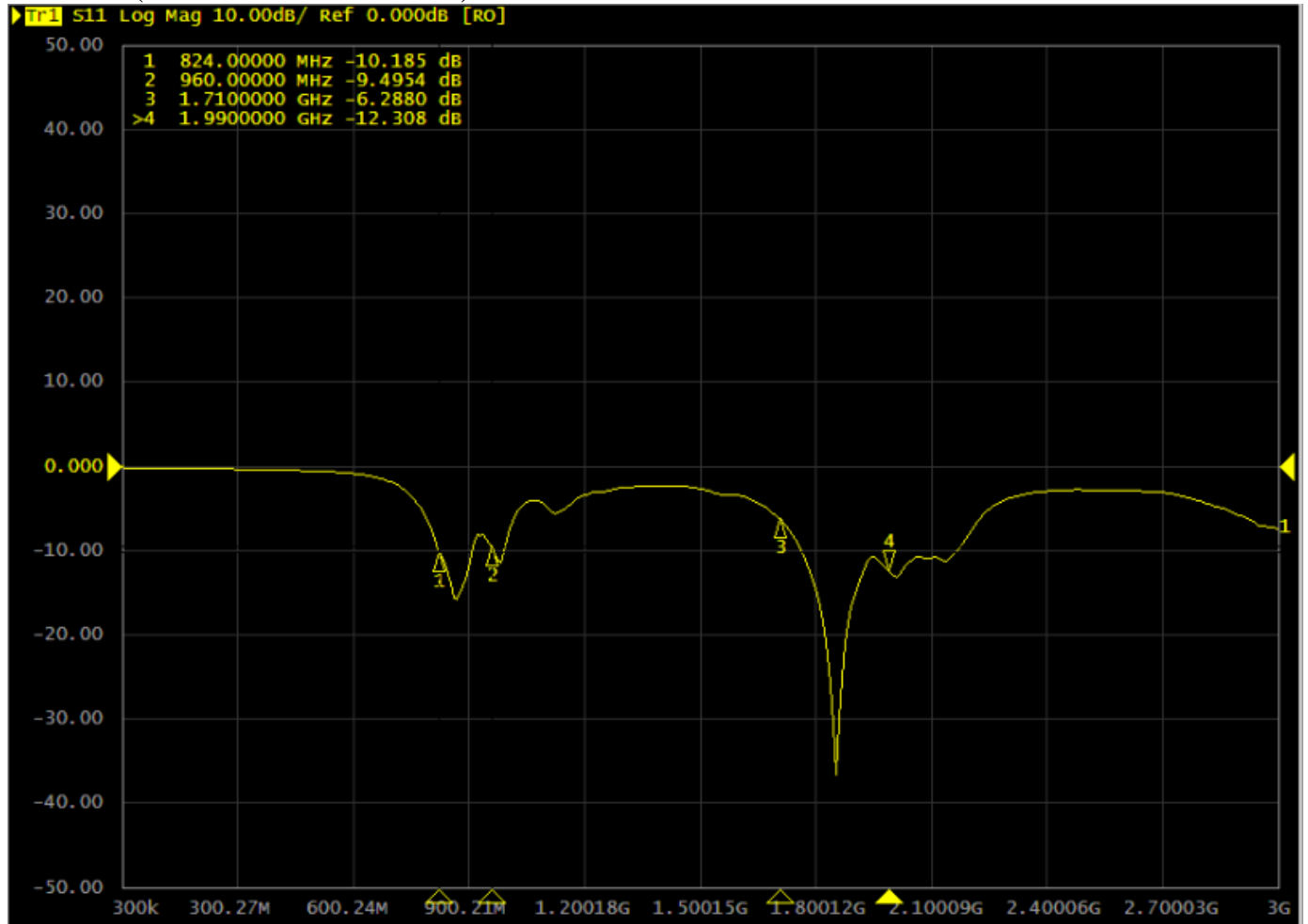
✧RoHS Compliant

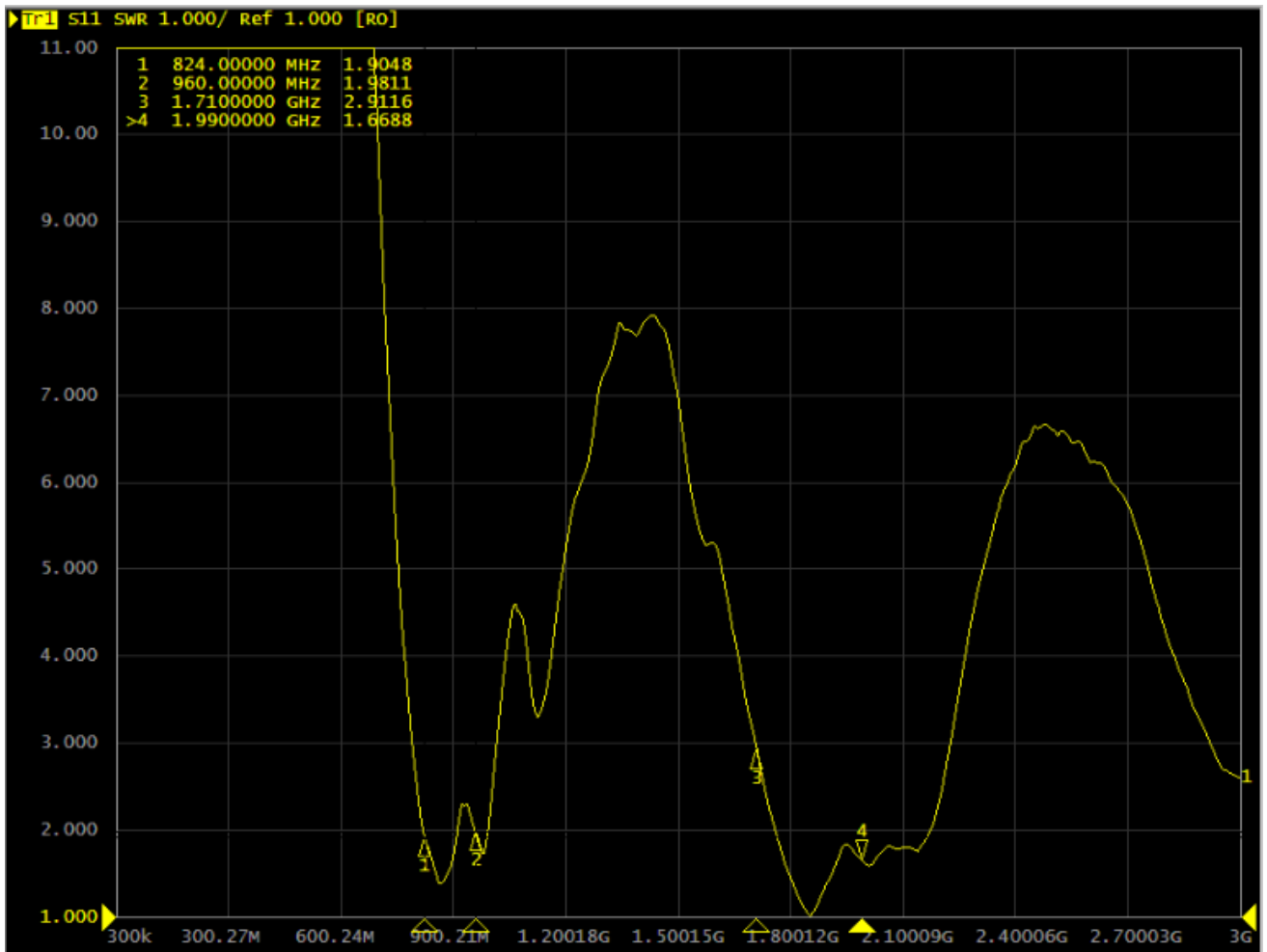
✧ISO 9001 & ISO14001



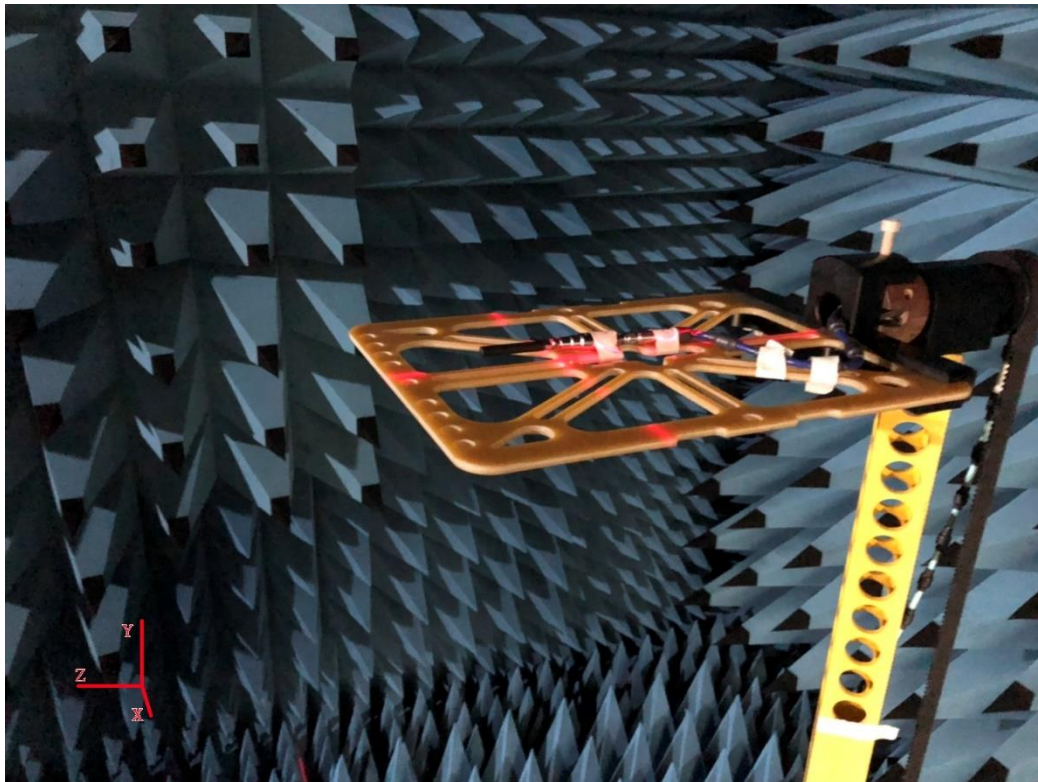
Frequency (MHz)	Return Loss (dB)	VSWR	Efficiency (%)	Gain (dBi)
824 MHz	-10.18	1.90	17.74	-4.85
960 MHz	-9.49	1.98	23.88	-2.9
1710 MHz	-6.28	2.91	42.36	1.33
1990 MHz	-12.30	1.66	45.92	1.81

Test Data(Return Loss & VSWR)



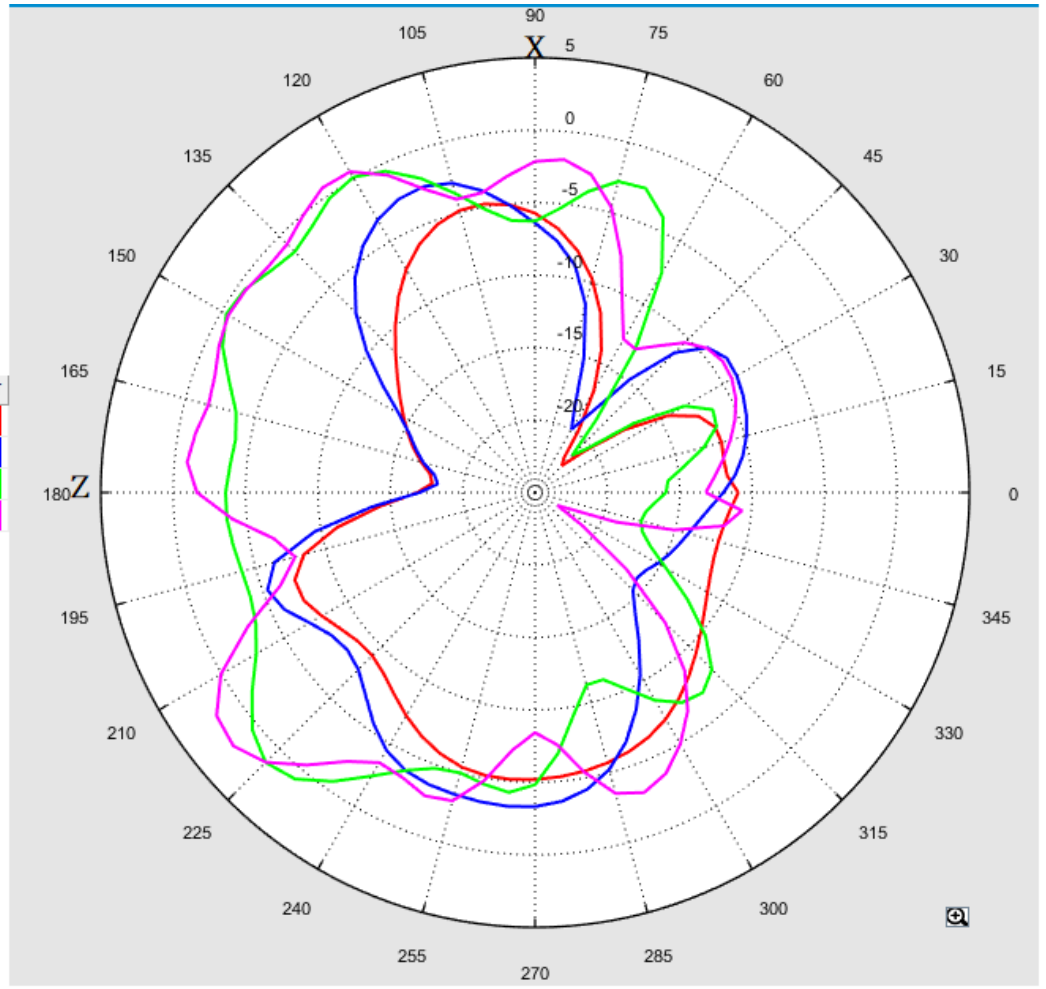


3D Test Photo

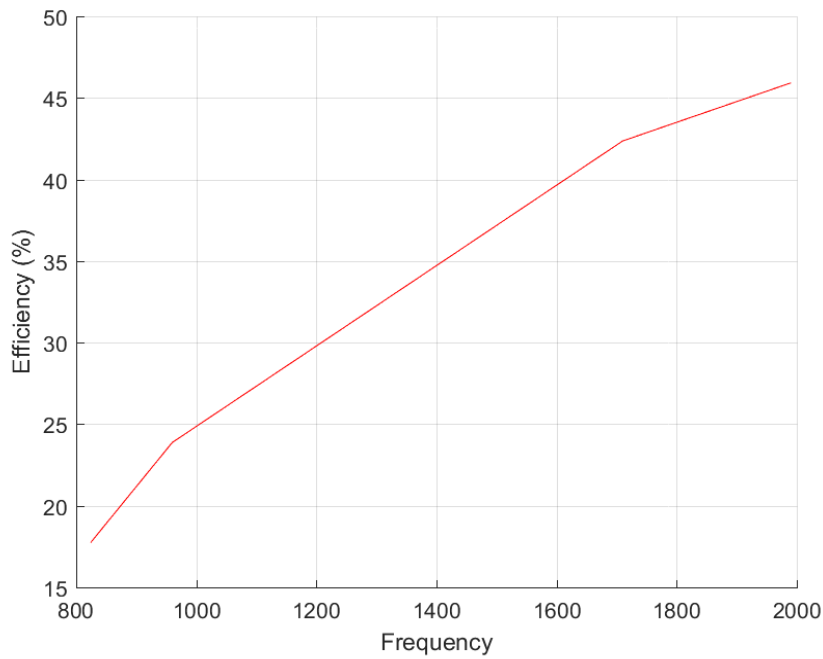


3D Test Data

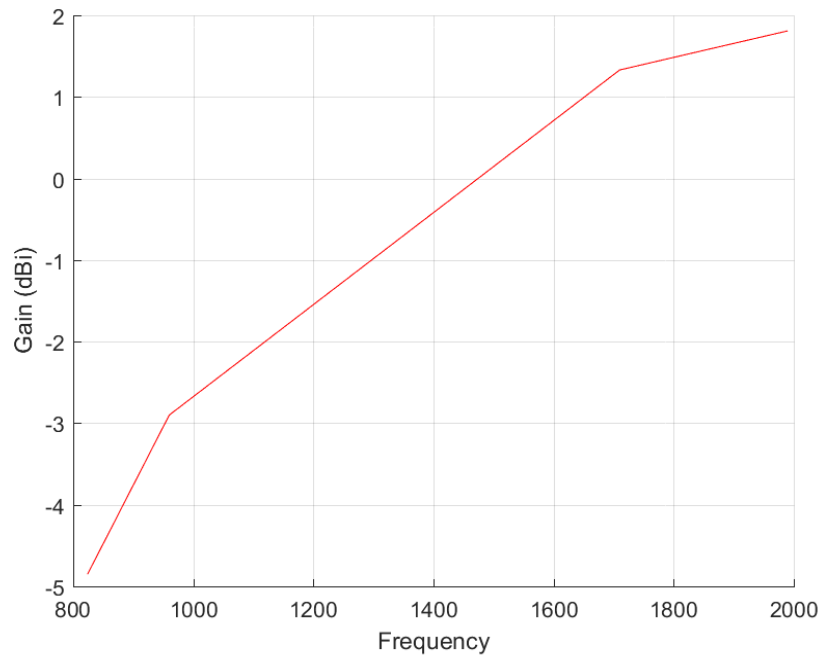
Choose	Freq. / Chan.	Color
<input checked="" type="checkbox"/>	824MHz	Red
<input checked="" type="checkbox"/>	960MHz	Blue
<input checked="" type="checkbox"/>	1.71GHz	Green
<input checked="" type="checkbox"/>	1.99GHz	Magenta



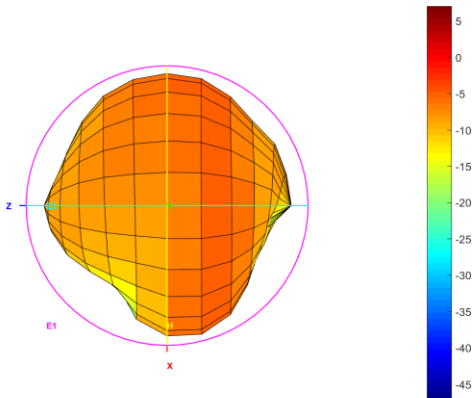
Total_Efficiency (%)



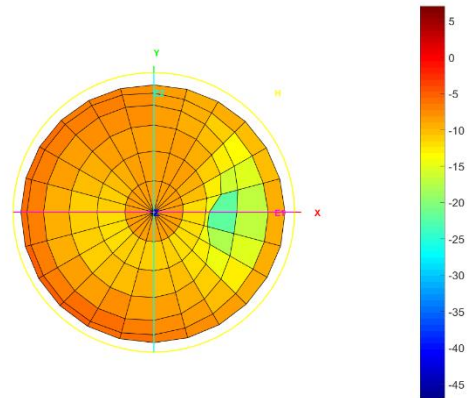
Total_Gain (dBi)



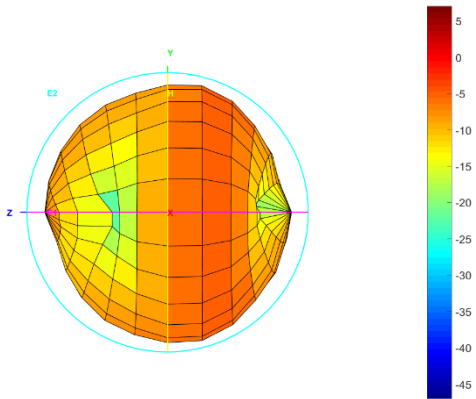
Total_3D_Top View_824MHz



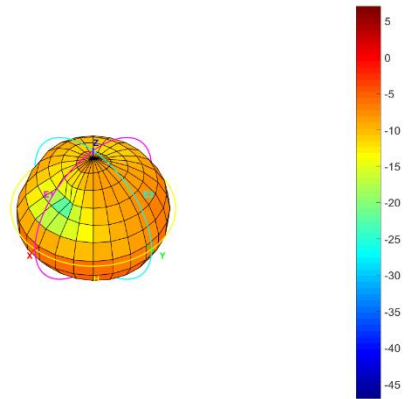
Total_3D_Front View_824MHz



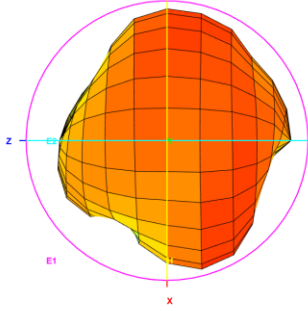
Total_3D_Left View_824MHz



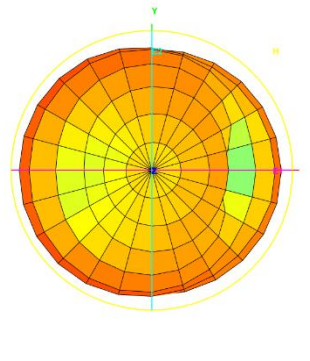
Total_3D_Side View 1_824MHz



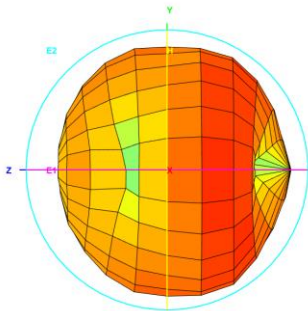
Total_3D_Top View_960MHz



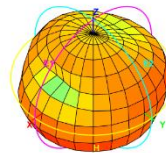
Total_3D_Front View_960MHz



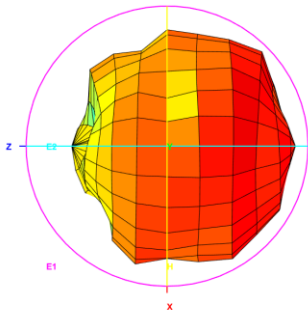
Total_3D_Left View_960MHz



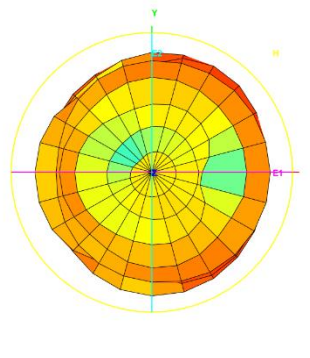
Total_3D_Side View 1_960MHz



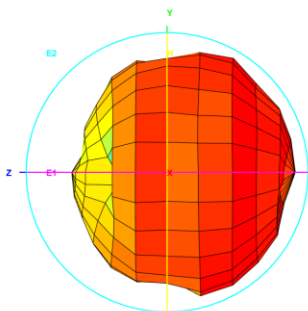
Total_3D_Top View_1.71GHz



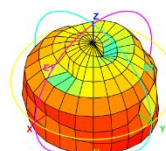
Total_3D_Front View_1.71GHz



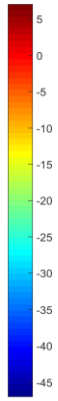
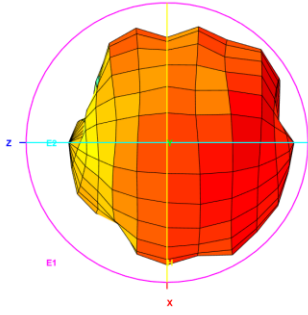
Total_3D_Left View_1.71GHz



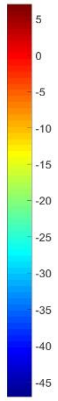
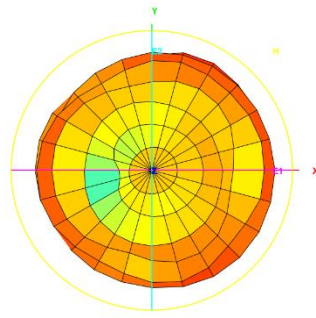
Total_3D_Side View 1_1.71GHz



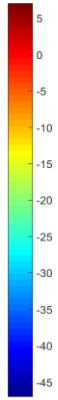
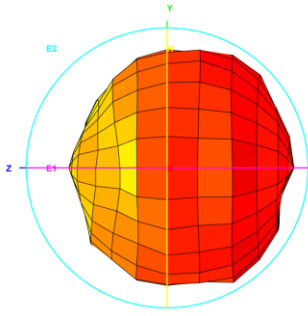
Total_3D_Top View_1.99GHz



Total_3D_Front View_1.99GHz



Total_3D_Left View_1.99GHz



Total_3D_Side View 1_1.99GHz

