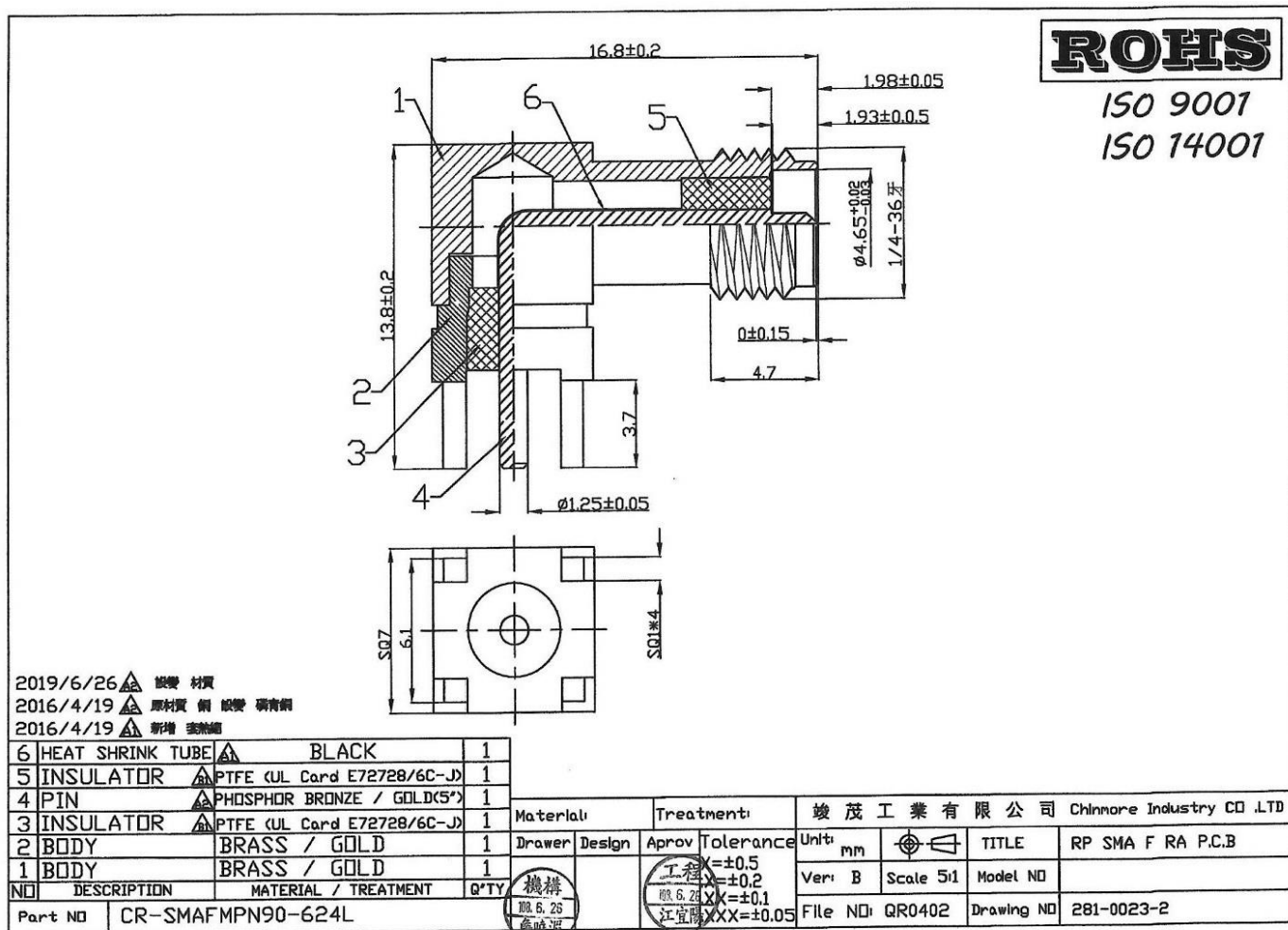




CHINMORE INDUSTRY CO.,LTD

Specification

1. Product Type: SMA Series Connector
 2. *Chinmore's* No: CR-SMAFMPN90-624L
- ✘RoHS Compliant
- ✘ISO 9001 & ISO 14001



Specifications

Electrical		
Impedance		50 ohm
Frequency Range		0-6 G
Working Voltage		335 VRMS max.
Dielectric Withstanding Voltage		1000 VRMS min.
VSWR	Right Angle	1.5 max
Insulator Resistance		5000 Megohms min.
Material		
Parts Name	Material	Finish
Body ,Metal Parts	Brass Per	Gold 1 micro-inches
Center Contacts	Brass	Gold 3 micro-inches
Insulators	Teflon	None
Mechanical & Environmental		
Durability(Mating)		500 cycles min
Temperature Range		-65° C to -165°